



SZABO SCANDIC

Part of Europa Biosite

Produktinformation



Forschungsprodukte & Biochemikalien



Zellkultur & Verbrauchsmaterial



Diagnostik & molekulare Diagnostik



Laborgeräte & Service

Weitere Information auf den folgenden Seiten!
See the following pages for more information!



Lieferung & Zahlungsart

siehe unsere [Liefer- und Versandbedingungen](#)

Zuschläge

- Mindermengenzuschlag
- Trockeneiszuschlag
- Gefahrgutzuschlag
- Expressversand

SZABO-SCANDIC HandelsgmbH

Quellenstraße 110, A-1100 Wien

T. +43(0)1 489 3961-0

F. +43(0)1 489 3961-7

mail@szabo-scandic.com

www.szabo-scandic.com

[linkedin.com/company/szaboscandic](https://www.linkedin.com/company/szaboscandic) 

CXCR5 antibody [HL3708]

Cat. No. GTX641880

Host	Rabbit
Clonality	Monoclonal
Isotype	IgG
Applications	WB, IHC-P, IHC-Fr
Reactivity	Human, Mouse, Rat

Package
100 µl, 25 µl

Applications

Application Note

*Optimal dilutions/concentrations should be determined by the researcher.

Suggested dilution	Recommended dilution
WB	1:500-1:3000
IHC-P	Assay dependent
IHC-Fr	Assay dependent

Not tested in other applications.

Observed MW (kDa)	40-95 kDa.
Product Note	Highly recommended for IHC-P in human tissues. This antibody was raised against human CXCR5 Intracellular domain.

Properties

Form	Liquid
Buffer	PBS
Preservative	No preservatives
Storage	Store as concentrated solution. Centrifuge briefly prior to opening vial. For short-term storage (1-2 weeks), store at 4°C. For long-term storage, aliquot and store at -20°C or below. Avoid multiple freeze-thaw cycles.
Concentration	1 mg/ml (Please refer to the vial label for the specific concentration.)
Immunogen	Synthetic peptide encompassing a sequence within the Intracellular domain of human CXCR5. The exact sequence is proprietary.
Purification	Affinity purified by Protein A.
Conjugation	Unconjugated

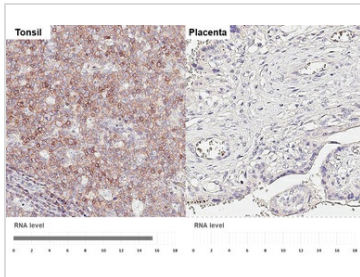


For full product information, images and publications, please visit our [website](#).

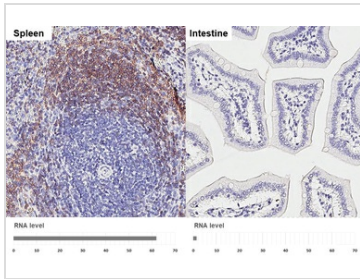
For laboratory research use only. Not for any clinical, therapeutic, or diagnostic use in humans or animals. Not for animal or human consumption.

Note

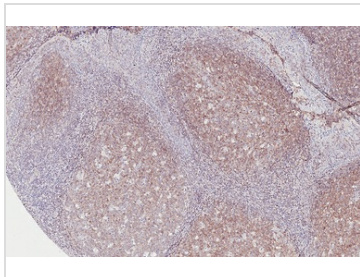
Purchasers shall not, and agree not to enable third parties to, analyze, copy, reverse engineer or otherwise attempt to determine the structure or sequence of the product.

DATA IMAGES

GTx641880 IHC-P Image

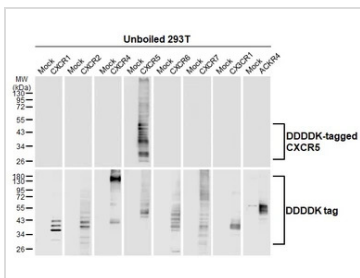
CXCR5 antibody [HL3708] detects CXCR5 protein by immunohistochemical analysis.
 Sample: Paraffin-embedded human tissues.
 CXCR5 stained by CXCR5 antibody [HL3708] (GTx641880) diluted at 1:100.
 Antigen Retrieval: Citrate buffer, pH 6.0, 15 min
 Corresponding RNA levels (nTPM) in the tissues are based on Human Protein Atlas program.


GTx641880 IHC-P Image

CXCR5 antibody [HL3708] detects CXCR5 protein by immunohistochemical analysis.
 Sample: Paraffin-embedded mouse tissues.
 CXCR5 stained by CXCR5 antibody [HL3708] (GTx641880) diluted at 1:250.
 Antigen Retrieval: Citrate buffer, pH 6.0, 15 min
 Corresponding RNA levels (RPKM) in the tissues are based on NCBI database.


GTx641880 IHC-P Image

CXCR5 antibody [HL3708] detects CXCR5 protein by immunohistochemical analysis.
 Sample: Paraffin-embedded human tonsil.
 CXCR5 stained by CXCR5 antibody [HL3708] (GTx641880) diluted at 1:100.
 Antigen Retrieval: Citrate buffer, pH 6.0, 15 min


GTx641880 WB Image

Unboiled non-transfected (-) and transfected (+) 293T whole cell extracts (30 µg) were separated by 10% SDS-PAGE, and the membrane was blotted with CXCR5 antibody [HL3708] (GTx641880) diluted at 1:5000. The HRP-conjugated anti-rabbit IgG antibody (GTx213110-01) was used to detect the primary antibody.



For full product information, images and publications, please visit our [website](https://www.genetex.com).