



# SZABO SCANDIC

Part of Europa Biosite

## Produktinformation



Forschungsprodukte & Biochemikalien



Zellkultur & Verbrauchsmaterial



Diagnostik & molekulare Diagnostik



Laborgeräte & Service

Weitere Information auf den folgenden Seiten!  
See the following pages for more information!



### Lieferung & Zahlungsart

siehe unsere [Liefer- und Versandbedingungen](#)

### Zuschläge

- Mindermengenzuschlag
- Trockeneiszuschlag
- Gefahrgutzuschlag
- Expressversand

### SZABO-SCANDIC Handels GmbH

Quellenstraße 110, A-1100 Wien

T. +43(0)1 489 3961-0

F. +43(0)1 489 3961-7

[mail@szabo-scandic.com](mailto:mail@szabo-scandic.com)

[www.szabo-scandic.com](http://www.szabo-scandic.com)

[linkedin.com/company/szaboscandic](https://www.linkedin.com/company/szaboscandic)



# LRRC15 antibody [HL3750]

**Cat. No. GTX641949**

|                     |            |
|---------------------|------------|
| <b>Host</b>         | Rabbit     |
| <b>Clonality</b>    | Monoclonal |
| <b>Isotype</b>      | IgG        |
| <b>Applications</b> | WB, ICC/IF |
| <b>Reactivity</b>   | Human      |

**Package**  
100 µl, 25 µl

## Applications

### Application Note

\*Optimal dilutions/concentrations should be determined by the researcher.

| Suggested dilution | Recommended dilution |
|--------------------|----------------------|
| WB                 | 1:500-1:3000         |
| ICC/IF             | Assay dependent      |

Not tested in other applications.

**Observed MW (kDa)** 88 kDa.

**Product Note** This antibody was raised against human LRRC15 Extracellular domain.

## Properties

|                      |  |
|----------------------|--|
| <b>Form</b>          | Liquid   |
| <b>Buffer</b>        | PBS  |
| <b>Preservative</b>  | No preservatives   |
| <b>Storage</b>       | Store as concentrated solution. Centrifuge briefly prior to opening vial. For short-term storage (1-2 weeks), store at 4°C. For long-term storage, aliquot and store at -20°C or below. Avoid multiple freeze-thaw cycles. |
| <b>Concentration</b> | 1 mg/ml (Please refer to the vial label for the specific concentration.)   |
| <b>Immunogen</b>     | Recombinant protein encompassing a sequence within the Extracellular domain of human LRRC15. The exact sequence is proprietary.  |
| <b>Purification</b>  | Affinity purified by Protein A.  |
| <b>Conjugation</b>   | Unconjugated   |

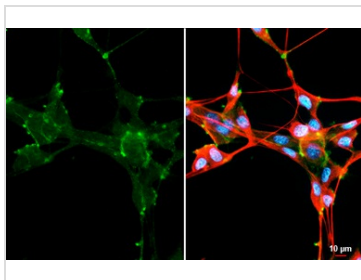
### Note

For laboratory research use only. Not for any clinical, therapeutic, or diagnostic use in humans or animals. Not for animal or human consumption.

Purchasers shall not, and agree not to enable third parties to, analyze, copy, reverse engineer or otherwise attempt to determine the structure or sequence of the product.



For full product information, images and publications, please visit our [website](#).

**DATA IMAGES**

**GTx641949 ICC/IF Image**

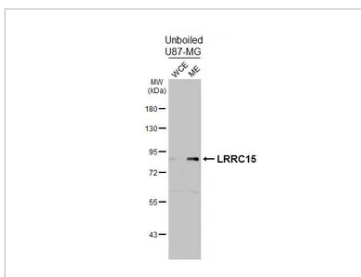
LRRC15 antibody [HL3750] detects LRRC15 protein by immunofluorescent analysis.

Sample: U87-MG cells were fixed in ice-cold MeOH for 5 min.

Green: LRRC15 stained by LRRC15 antibody [HL3750] (GTx641949) diluted at 1:500.

Red: alpha Tubulin, a cytoskeleton marker, stained by alpha Tubulin antibody [GT114] (GTx628802) diluted at 1:1000.

Blue: Fluoroshield with DAPI (GTx30920).

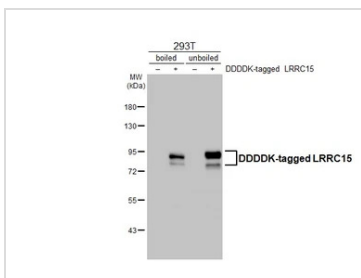

**GTx641949 WB Image**

Unboiled U87-MG whole cell and membrane extracts (30 µg) were separated by 7.5% SDS-PAGE, and the

membrane was blotted with LRRC15 antibody [HL3750] (GTx641949) diluted at 1:1000. The HRP-

conjugated anti-rabbit IgG antibody (GTx213110-01) was used to detect the primary antibody. (WCE:

whole cell extract; ME: membrane extract)


**GTx641949 WB Image**

Non-transfected (-) and transfected (+) boiled and unboiled 293T whole cell extracts (30 µg) were

separated by 7.5% SDS-PAGE, and the membrane was blotted with LRRC15 antibody [HL3750]

(GTx641949) diluted at 1:5000. The HRP-conjugated anti-rabbit IgG antibody (GTx213110-01) was used to detect the primary antibody.



For full product information, images and publications, please visit our [website](https://www.genetex.com).