



SZABO SCANDIC

Part of Europa Biosite

Produktinformation



Forschungsprodukte & Biochemikalien



Zellkultur & Verbrauchsmaterial



Diagnostik & molekulare Diagnostik



Laborgeräte & Service

Weitere Information auf den folgenden Seiten!
See the following pages for more information!



Lieferung & Zahlungsart

siehe unsere [Liefer- und Versandbedingungen](#)

Zuschläge

- Mindermengenzuschlag
- Trockeneiszuschlag
- Gefahrgutzuschlag
- Expressversand

SZABO-SCANDIC Handels GmbH

Quellenstraße 110, A-1100 Wien

T. +43(0)1 489 3961-0

F. +43(0)1 489 3961-7

mail@szabo-scandic.com

www.szabo-scandic.com

[linkedin.com/company/szaboscandic](https://www.linkedin.com/company/szaboscandic) 

BASP1 antibody [HL3760]

Cat. No. GTX641959

Host	Rabbit
Clonality	Monoclonal
Isotype	IgG
Applications	WB, IHC-P
Reactivity	Human, Mouse

Package
100 µl, 25 µl

Applications

Application Note

*Optimal dilutions/concentrations should be determined by the researcher.

Suggested dilution	Recommended dilution
WB	1:500-1:3000
IHC-P	Assay dependent

Not tested in other applications.

Observed MW (kDa) 48 kDa.

Product Note Highly recommended for IHC-P in mouse tissues.

Properties

Form	Liquid
Buffer	PBS
Preservative	No preservatives
Storage	Store as concentrated solution. Centrifuge briefly prior to opening vial. For short-term storage (1-2 weeks), store at 4°C. For long-term storage, aliquot and store at -20°C or below. Avoid multiple freeze-thaw cycles.
Concentration	1 mg/ml (Please refer to the vial label for the specific concentration.)
Immunogen	Recombinant fragment of human BASP1.
Purification	Affinity purified by Protein A.
Conjugation	Unconjugated

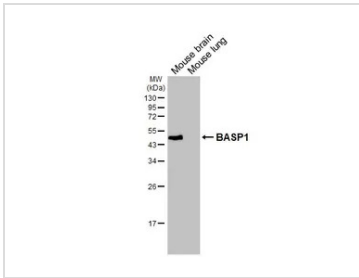
Note

For laboratory research use only. Not for any clinical, therapeutic, or diagnostic use in humans or animals. Not for animal or human consumption.

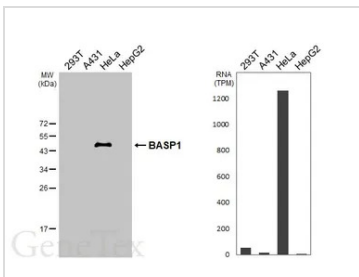
Purchasers shall not, and agree not to enable third parties to, analyze, copy, reverse engineer or otherwise attempt to determine the structure or sequence of the product.



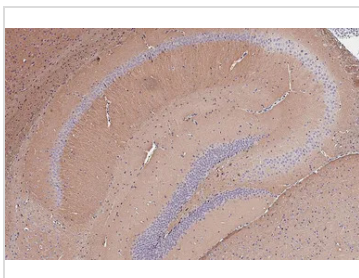
For full product information, images and publications, please visit our [website](#).

DATA IMAGES

GTx641959 WB Image

Various tissue extracts (50 µg) were separated by 12% SDS-PAGE, and the membrane was blotted with BASP1 antibody [HL3760] (GTx641959) diluted at 1:1000. The HRP-conjugated anti-rabbit IgG antibody (GTx213110-01) was used to detect the primary antibody.


GTx641959 WB Image

Various whole cell extracts (30 µg) were separated by 12% SDS-PAGE, and the membrane was blotted with BASP1 antibody [HL3760] (GTx641959) diluted at 1:1000. The HRP-conjugated anti-rabbit IgG antibody (GTx213110-01) was used to detect the primary antibody, and the signal was developed with Trident ECL plus-Enhanced. Corresponding RNA expression data for the same cell lines are based on Human Protein Atlas program.

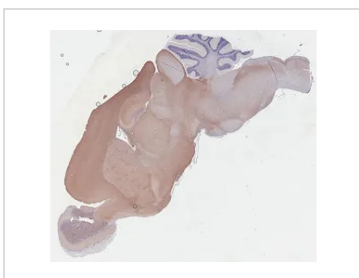

GTx641959 IHC-P Image

BASP1 antibody [HL3760] detects BASP1 protein by immunohistochemical analysis.

Sample: Paraffin-embedded mouse hippocampus.

BASP1 stained by BASP1 antibody [HL3760] (GTx641959) diluted at 1:250.

Antigen Retrieval: Citrate buffer, pH 6.0, 15 min

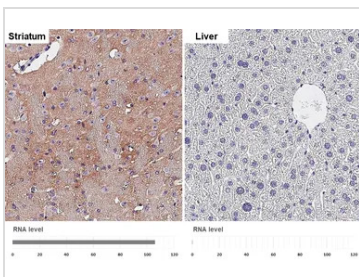

GTx641959 IHC-P Image

BASP1 antibody [HL3760] detects BASP1 protein by immunohistochemical analysis.

Sample: Paraffin-embedded mouse brain.

BASP1 stained by BASP1 antibody [HL3760] (GTx641959) diluted at 1:250.

Antigen Retrieval: Citrate buffer, pH 6.0, 15 min


GTx641959 IHC-P Image

BASP1 antibody [HL3760] detects BASP1 protein by immunohistochemical analysis.

Sample: Paraffin-embedded mouse tissues.

BASP1 stained by BASP1 antibody [HL3760] (GTx641959) diluted at 1:250.

Antigen Retrieval: Citrate buffer, pH 6.0, 15 min

Corresponding RNA levels (RPKM) in the tissues are based on NCBI database.



For full product information, images and publications, please visit our [website](https://www.genetex.com).