



SZABO SCANDIC

Part of Europa Biosite

Produktinformation



Forschungsprodukte & Biochemikalien



Zellkultur & Verbrauchsmaterial



Diagnostik & molekulare Diagnostik



Laborgeräte & Service

Weitere Information auf den folgenden Seiten!
See the following pages for more information!



Lieferung & Zahlungsart

siehe unsere [Liefer- und Versandbedingungen](#)

Zuschläge

- Mindermengenzuschlag
- Trockeneiszuschlag
- Gefahrgutzuschlag
- Expressversand

SZABO-SCANDIC HandelsgmbH

Quellenstraße 110, A-1100 Wien

T. +43(0)1 489 3961-0

F. +43(0)1 489 3961-7

mail@szabo-scandic.com

www.szabo-scandic.com

[linkedin.com/company/szaboscandic](https://www.linkedin.com/company/szaboscandic) 

PAR2 antibody [HL3771]

Cat. No. GTX641970

| | |
|--------------|------------|
| Host | Rabbit |
| Clonality | Monoclonal |
| Isotype | IgG |
| Applications | WB, ICC/IF |
| Reactivity | Human |

Package
100 µl, 25 µl

Applications

Application Note

*Optimal dilutions/concentrations should be determined by the researcher.

| Suggested dilution | Recommended dilution |
|--------------------|----------------------|
| WB | Assay dependent |
| ICC/IF | 1:100-1:1000 |

Not tested in other applications.

Observed MW (kDa) 53 kDa.

Product Note This antibody was raised against human PAR2 Extracellular domain.

Properties

| | |
|---------------|--|
| Form | Liquid |
| Buffer | PBS |
| Preservative | No preservatives |
| Storage | Store as concentrated solution. Centrifuge briefly prior to opening vial. For short-term storage (1-2 weeks), store at 4°C. For long-term storage, aliquot and store at -20°C or below. Avoid multiple freeze-thaw cycles. |
| Concentration | 1 mg/ml |
| Immunogen | Synthetic peptide encompassing a sequence within the Extracellular domain of human PAR2. The exact sequence is proprietary. |
| Purification | Affinity purified by Protein A. |
| Conjugation | Unconjugated |

Note

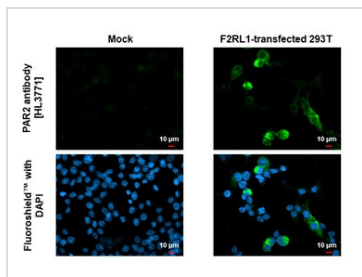
For laboratory research use only. Not for any clinical, therapeutic, or diagnostic use in humans or animals. Not for animal or human consumption.

Purchasers shall not, and agree not to enable third parties to, analyze, copy, reverse engineer or otherwise attempt to determine the structure or sequence of the product.



For full product information, images and publications, please visit our [website](#).

DATA IMAGES



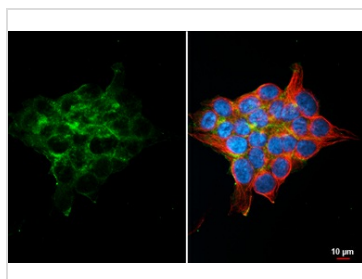
GTx641970 ICC/IF Image

PAR2 antibody [HL3771] detects PAR2 protein by immunofluorescent analysis.

Sample: Mock and transfected 293T cells were fixed in ice-cold MeOH for 5 min.

Green: PAR2 stained by PAR2 antibody [HL3771] (GTx641970) diluted at 1:500.

Blue: Fluoroshield with DAPI (GTx30920).



GTx641970 ICC/IF Image

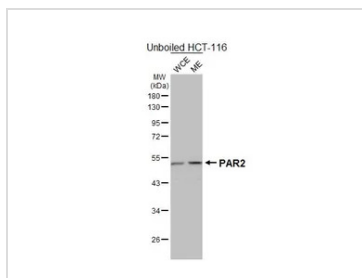
PAR2 antibody [HL3771] detects PAR2 protein by immunofluorescent analysis.

Sample: HCT116 cells were fixed in ice-cold MeOH for 5 min.

Green: PAR2 stained by PAR2 antibody [HL3771] (GTx641970) diluted at 1:500.

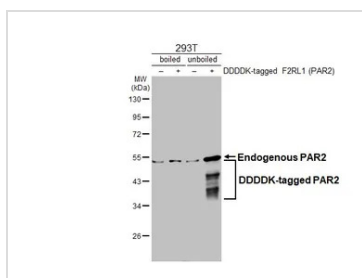
Red: alpha Tubulin, a cytoskeleton marker, stained by alpha Tubulin antibody [GT114] (GTx628802) diluted at 1:1000.

Blue: Fluoroshield with DAPI (GTx30920).



GTx641970 WB Image

Unboiled HCT-116 whole cell and membrane extracts (30 μg) were separated by 10% SDS-PAGE, and the membrane was blotted with PAR2 antibody [HL3771] (GTx641970) diluted at 1:1000. The HRP-conjugated anti-rabbit IgG antibody (GTx213110-01) was used to detect the primary antibody. (WCE: whole cell extract; ME: membrane extract)



GTx641970 WB Image

Non-transfected (–) and transfected (+) boiled and unboiled 293T whole cell extracts (30 μg) were separated by 10% SDS-PAGE, and the membrane was blotted with PAR2 antibody [HL3771] (GTx641970) diluted at 1:5000. The HRP-conjugated anti-rabbit IgG antibody (GTx213110-01) was used to detect the primary antibody.



For full product information, images and publications, please visit our [website](https://www.genetex.com).