



SZABO SCANDIC

Part of Europa Biosite

Produktinformation



Forschungsprodukte & Biochemikalien



Zellkultur & Verbrauchsmaterial



Diagnostik & molekulare Diagnostik



Laborgeräte & Service

Weitere Information auf den folgenden Seiten!
See the following pages for more information!



Lieferung & Zahlungsart

siehe unsere [Liefer- und Versandbedingungen](#)

Zuschläge

- Mindermengenzuschlag
- Trockeneiszuschlag
- Gefahrgutzuschlag
- Expressversand

SZABO-SCANDIC HandelsgmbH

Quellenstraße 110, A-1100 Wien

T. +43(0)1 489 3961-0

F. +43(0)1 489 3961-7

mail@szabo-scandic.com

www.szabo-scandic.com

[linkedin.com/company/szaboscandic](https://www.linkedin.com/company/szaboscandic)



CXCR5 antibody [HL3778]

Cat. No. GTX641977

Host	Rabbit
Clonality	Monoclonal
Isotype	IgG
Applications	ICC/IF, FCM
Reactivity	Human

Package
100 µl, 25 µl

Applications

Application Note

*Optimal dilutions/concentrations should be determined by the researcher.

Suggested dilution	Recommended dilution
ICC/IF	Assay dependent
FCM	Assay dependent

Note : The FcR Blocking Reagent is recommended for use prior to the addition of the researcher's antibody to samples that contain human Fc receptor-expressing cells.

Not tested in other applications.

Product Note This antibody was raised against human CXCR5 Extracellular domain.

Properties

Form	Liquid
Buffer	PBS
Preservative	No preservatives
Storage	Store as concentrated solution. Centrifuge briefly prior to opening vial. For short-term storage (1-2 weeks), store at 4°C. For long-term storage, aliquot and store at -20°C or below. Avoid multiple freeze-thaw cycles.
Concentration	1 mg/ml
Immunogen	Synthetic peptide encompassing a sequence within the Extracellular domain of human CXCR5. The exact sequence is proprietary.
Purification	Affinity purified by Protein A.
Conjugation	Unconjugated

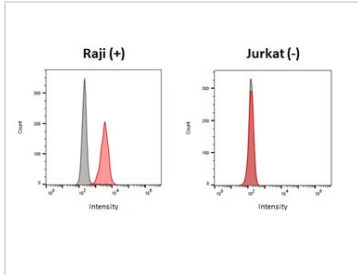


For full product information, images and publications, please visit our [website](#).

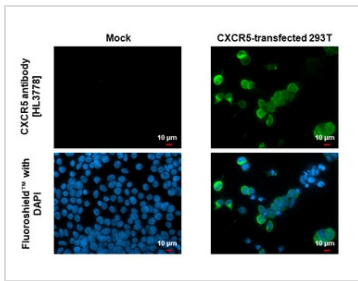
For laboratory research use only. Not for any clinical, therapeutic, or diagnostic use in humans or animals. Not for animal or human consumption.

Note

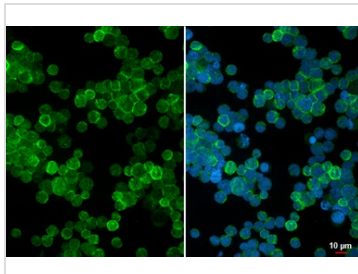
Purchasers shall not, and agree not to enable third parties to, analyze, copy, reverse engineer or otherwise attempt to determine the structure or sequence of the product.

DATA IMAGES

GTX641977 FCM Image

CXCR5 antibody [HL3778] antibody (GTX641977) detects CXCR5 protein by flow cytometry analysis.
Sample: Non-fixed and non-permeabilized Raji or Jurkat cells were stained with 5µg/ml GTX641977 (red) or a Rabbit monoclonal IgG isotype control (gray) in 1% FBS/ 5mM EDTA/PBS at 4°C for 1 hour. Alexa Fluor 488-labeled anti-Rabbit IgG at 1/500 dilution was used as the secondary antibody. Prior to staining process, Raji or Jurkat cells were treated with the FcR Blocking Reagent 10 mins at 4°C.


GTX641977 ICC/IF Image

CXCR5 antibody [HL3778] detects CXCR5 protein by immunofluorescent analysis.
Sample: Mock and transfected 293T cells were fixed in 4% paraformaldehyde at RT for 15 min.
Green: CXCR5 stained by CXCR5 antibody [HL3778] (GTX641977) diluted at 1:500.
Blue: Fluoroshield with DAPI (GTX30920).


GTX641977 ICC/IF Image

CXCR5 antibody [HL3778] detects CXCR5 protein by immunofluorescent analysis.
Sample: Daudi cells were fixed in 4% paraformaldehyde at RT for 15 min.
Green: CXCR5 stained by CXCR5 antibody [HL3778] (GTX641977) diluted at 1:100.
Blue: Fluoroshield with DAPI (GTX30920).



For full product information, images and publications, please visit our [website](https://www.genetex.com).