



SZABO SCANDIC

Part of Europa Biosite

Produktinformation



Forschungsprodukte & Biochemikalien



Zellkultur & Verbrauchsmaterial



Diagnostik & molekulare Diagnostik



Laborgeräte & Service

Weitere Information auf den folgenden Seiten!
See the following pages for more information!



Lieferung & Zahlungsart

siehe unsere [Liefer- und Versandbedingungen](#)

Zuschläge

- Mindermengenzuschlag
- Trockeneiszuschlag
- Gefahrgutzuschlag
- Expressversand

SZABO-SCANDIC HandelsgmbH

Quellenstraße 110, A-1100 Wien

T. +43(0)1 489 3961-0

F. +43(0)1 489 3961-7

mail@szabo-scandic.com

www.szabo-scandic.com

[linkedin.com/company/szaboscandic](https://www.linkedin.com/company/szaboscandic) 

RPS6 (phospho Ser240/Ser244) antibody [HL3824]

Cat. No. GTX642048

Host	Rabbit
Clonality	Monoclonal
Isotype	IgG
Applications	WB, ICC/IF
Reactivity	Human, Mouse

Package
100 µl, 25 µl

Applications

Application Note

*Optimal dilutions/concentrations should be determined by the researcher.

Suggested dilution	Recommended dilution
WB	Assay dependent
ICC/IF	Assay dependent

Not tested in other applications.

Observed MW (kDa) 32 kDa.**Product Note**

This antibody detects RPS6 protein when dually phosphorylated at Ser240 and Ser244, and it also reacts with RPS6 protein when singly phosphorylated at Ser240 and Ser244.

Properties

Form	Liquid
Buffer	PBS
Preservative	No preservatives
Storage	Store as concentrated solution. Centrifuge briefly prior to opening vial. For short-term storage (1-2 weeks), store at 4°C. For long-term storage, aliquot and store at -20°C or below. Avoid multiple freeze-thaw cycles.
Concentration	1 mg/ml
Immunogen	Carrier-protein conjugated synthetic peptide surrounding phospho Ser240/Ser244 of human RPS6. The exact sequence is proprietary.
Purification	Affinity purified by Protein A.
Conjugation	Unconjugated

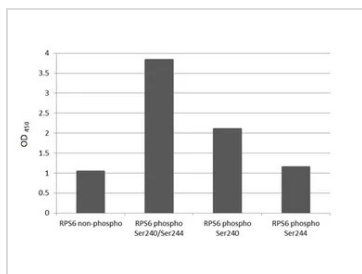


For full product information, images and publications, please visit our [website](#).

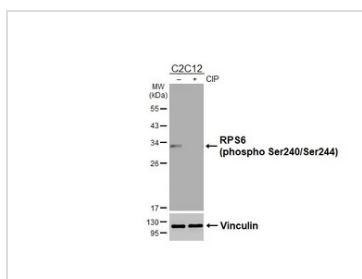
For laboratory research use only. Not for any clinical, therapeutic, or diagnostic use in humans or animals. Not for animal or human consumption.

Note

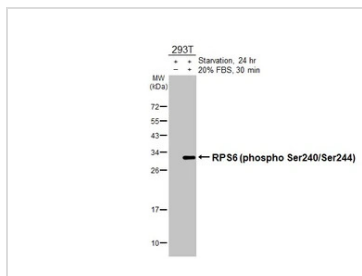
Purchasers shall not, and agree not to enable third parties to, analyze, copy, reverse engineer or otherwise attempt to determine the structure or sequence of the product.

DATA IMAGES

GTX642048 Image

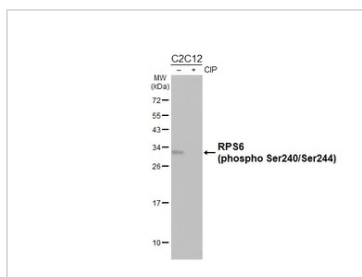
Specificity test was performed by coating the plate with recombinant RPS6 non-phospho peptide, RPS6 (phospho Ser240) peptide, RPS6 (phospho Ser244) peptide, and RPS6 (phospho Ser240/Ser244) peptide (62.5 ng/mL). Coated protein was probed with RPS6 (phospho Ser240/Ser244) antibody [HL3824] (GTX642048) (1 µg/mL). Goat anti-rabbit IgG antibody (HRP) (GTX213110-01) (1:10000) was used to detect the bound primary antibody.


GTX642048 WB Image

Untreated (-) and treated (+) C2C12 whole cell extracts (30 µg) were separated by 12% SDS-PAGE, and the membrane was blotted with RPS6 (phospho Ser240/Ser244) antibody [HL3824] (GTX642048) diluted at 1:1000. The HRP-conjugated anti-rabbit IgG antibody (GTX213110-01) was used to detect the primary antibody.


GTX642048 WB Image

Untreated (-) and treated (+) 293T whole cell extracts (30 µg) were separated by 12% SDS-PAGE, and the membrane was blotted with RPS6 (phospho Ser240/Ser244) antibody [HL3824] (GTX642048) diluted at 1:1000. The HRP-conjugated anti-rabbit IgG antibody (GTX213110-01) was used to detect the primary antibody.


GTX642048 WB Image

Untreated (-) and treated (+) C2C12 whole cell extract (30 µg) were separated by 12% SDS-PAGE, and the membrane was blotted with RPS6 (phospho Ser240/Ser244) antibody [HL3824] (GTX642048) diluted at 1:1000. The HRP-conjugated anti-rabbit IgG antibody (GTX213110-01) was used to detect the primary antibody.



For full product information, images and publications, please visit our [website](https://www.genetex.com).