



# SZABO SCANDIC

Part of Europa Biosite

## Produktinformation



Forschungsprodukte & Biochemikalien



Zellkultur & Verbrauchsmaterial



Diagnostik & molekulare Diagnostik



Laborgeräte & Service

Weitere Information auf den folgenden Seiten!  
See the following pages for more information!



### Lieferung & Zahlungsart

siehe unsere [Liefer- und Versandbedingungen](#)

### Zuschläge

- Mindermengenzuschlag
- Trockeneiszuschlag
- Gefahrgutzuschlag
- Expressversand

### SZABO-SCANDIC Handels GmbH

Quellenstraße 110, A-1100 Wien

T. +43(0)1 489 3961-0

F. +43(0)1 489 3961-7

[mail@szabo-scandic.com](mailto:mail@szabo-scandic.com)

[www.szabo-scandic.com](http://www.szabo-scandic.com)

[linkedin.com/company/szaboscandic](https://www.linkedin.com/company/szaboscandic) 

## CD31 antibody [HL3991]

Cat. No. GTX642317

Host	Rabbit
Clonality	Monoclonal
Isotype	IgG
Applications	WB, ICC/IF, IHC-P, IHC-Fr
Reactivity	Human, Mouse

Package  
100 µl, 25 µl

## Applications

## Application Note

\*Optimal dilutions/concentrations should be determined by the researcher.

Suggested dilution	Recommended dilution
WB	Assay dependent
ICC/IF	Assay dependent
IHC-P	1:100-1:1000
IHC-Fr	Assay dependent

**Note : Antigen retrieval: Tris-EDTA (pH9.0) is recommended.**

Not tested in other applications.

**Observed MW (kDa)** 130 kDa.

## Product Note

This antibody may not be suitable for human IHC-Fr or mouse WB applications, as its species reactivity is based on WB/IHC-P for human and IHC-P/IHC-Fr for mouse.  
It was raised against human CD31 Intracellular domain.

## Properties

Form	Liquid
Buffer	PBS
Preservative	No preservatives
Storage	Store as concentrated solution. Centrifuge briefly prior to opening vial. For short-term storage (1-2 weeks), store at 4°C. For long-term storage, aliquot and store at -20°C or below. Avoid multiple freeze-thaw cycles.
Concentration	1 mg/ml
Immunogen	Synthetic peptide encompassing a sequence within the Intracellular domain of human CD31. The exact sequence is proprietary.
Purification	Affinity purified by Protein A.



For full product information, images and publications, please visit our [website](#).

Date 2025 / 08 / 26 Page 1 of 2

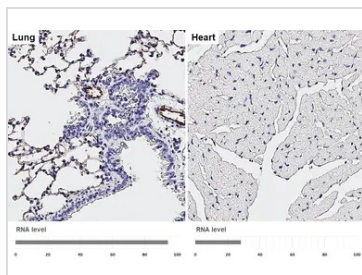
**Conjugation**

Unconjugated

**Note**

For laboratory research use only. Not for any clinical, therapeutic, or diagnostic use in humans or animals. Not for animal or human consumption.

Purchasers shall not, and agree not to enable third parties to, analyze, copy, reverse engineer or otherwise attempt to determine the structure or sequence of the product.

**DATA IMAGES**

**GTX642317 IHC-P Image**

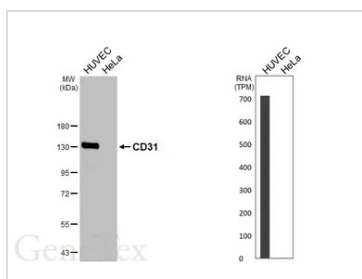
CD31 antibody [HL3991] detects CD31 protein by immunohistochemical analysis.

Sample: Paraffin-embedded mouse tissues.

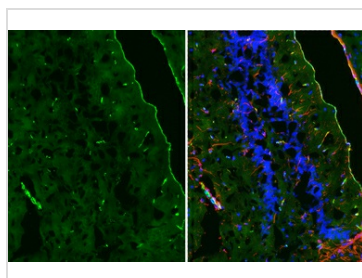
CD31 stained by CD31 antibody [HL3991] (GTX642317) diluted at 1:200.

Antigen Retrieval: Citrate buffer, pH 6.0, 15 min

Corresponding RNA levels (RPKM) in the tissues are based on NCBI database.


**GTX642317 WB Image**

Various whole cell extracts (30 µg) were separated by 7.5% SDS-PAGE, and the membrane was blotted with CD31 antibody [HL3991] (GTX642317) diluted at 1:1000. The HRP-conjugated anti-rabbit IgG antibody (GTX213110-01) was used to detect the primary antibody. Corresponding RNA expression data are based on Human Protein Atlas program.


**GTX642317 IHC-Fr Image**

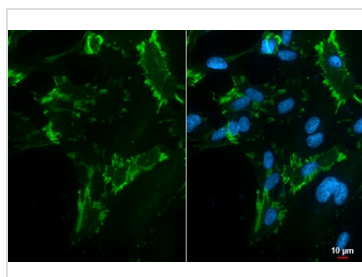
CD31 antibody [HL3991] detects CD31 protein by immunohistochemical analysis.

Sample: Frozen-sectioned mouse hippocampus.

Green: CD31 stained by CD31 antibody [HL3991] (GTX642317) diluted at 1:250.

Red: GFAP antibody [GT25] (GTX641104) diluted at 1:250.

Blue: Hoechst 33342 staining.


**GTX642317 ICC/IF Image**

CD31 antibody [HL3991] detects CD31 protein by immunofluorescent analysis.

Sample: HUVEC cells were fixed in 4% paraformaldehyde at RT for 15 min.

Green: CD31 stained by CD31 antibody [HL3991] (GTX642317) diluted at 1:500.

Blue: Fluoroshield with DAPI (GTX30920).



For full product information, images and publications, please visit our [website](https://www.genetex.com).