



# SZABO SCANDIC

Part of Europa Biosite

## Produktinformation



Forschungsprodukte & Biochemikalien



Zellkultur & Verbrauchsmaterial



Diagnostik & molekulare Diagnostik



Laborgeräte & Service

Weitere Information auf den folgenden Seiten!  
See the following pages for more information!



### Lieferung & Zahlungsart

siehe unsere [Liefer- und Versandbedingungen](#)

### Zuschläge

- Mindermengenzuschlag
- Trockeneiszuschlag
- Gefahrgutzuschlag
- Expressversand

### SZABO-SCANDIC HandelsgmbH

Quellenstraße 110, A-1100 Wien

T. +43(0)1 489 3961-0

F. +43(0)1 489 3961-7

[mail@szabo-scandic.com](mailto:mail@szabo-scandic.com)

[www.szabo-scandic.com](http://www.szabo-scandic.com)

[linkedin.com/company/szaboscandic](https://www.linkedin.com/company/szaboscandic) 

## mGluR1 antibody [HL4127]

Cat. No. GTX642573

Host	Rabbit
Clonality	Monoclonal
Isotype	IgG
Applications	WB, IHC-P
Reactivity	Human, Mouse, Rat

Package  
100 µl, 25 µl

## Applications

## Application Note

\*Optimal dilutions/concentrations should be determined by the researcher.

Suggested dilution	Recommended dilution
WB	1:500-1:3000
IHC-P	Assay dependent

Not tested in other applications.

**Observed MW (kDa)** 132 (monomer), >250 (dimer or multimer) kDa.

**Product Note** This antibody was raised against human mGluR1 Extracellular domain.

## Properties

Form	Liquid
Buffer	PBS
Preservative	No preservatives
Storage	Store as concentrated solution. Centrifuge briefly prior to opening vial. For short-term storage (1-2 weeks), store at 4°C. For long-term storage, aliquot and store at -20°C or below. Avoid multiple freeze-thaw cycles.
Concentration	1 mg/ml (Please refer to the vial label for the specific concentration.)
Immunogen	Synthetic peptide encompassing a sequence within the Extracellular domain of human mGluR1. The exact sequence is proprietary.
Purification	Affinity purified by Protein A.
Conjugation	Unconjugated

## Note

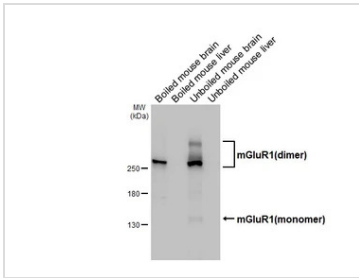
For laboratory research use only. Not for any clinical, therapeutic, or diagnostic use in humans or animals. Not for animal or human consumption.

Purchasers shall not, and agree not to enable third parties to, analyze, copy, reverse engineer or otherwise attempt to determine the structure or sequence of the product.



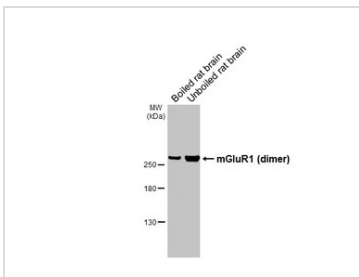
For full product information, images and publications, please visit our [website](#).

## DATA IMAGES



### GTx642573 WB Image

Boiled and unboiled mouse tissue extracts (50 µg) were separated by 5% SDS-PAGE, and the membrane was blotted with mGluR1 antibody [HL4127] (GTx642573) diluted at 1:1000. The HRP-conjugated anti-rabbit IgG antibody (GTx213110-01) was used to detect the primary antibody.



### GTx642573 WB Image

Boiled and unboiled rat tissue extracts (50 µg) were separated by 5% SDS-PAGE, and the membrane was blotted with mGluR1 antibody [HL4127] (GTx642573) diluted at 1:1000. The HRP-conjugated anti-rabbit IgG antibody (GTx213110-01) was used to detect the primary antibody.



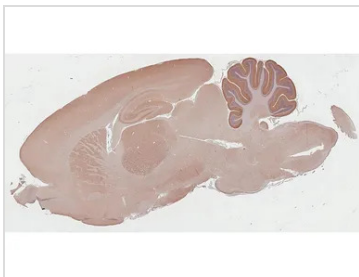
### GTx642573 IHC-P Image

mGluR1 antibody [HL4127] detects mGluR1 protein by immunohistochemical analysis.

Sample: Paraffin-embedded mouse brain.

mGluR1 stained by mGluR1 antibody [HL4127] (GTx642573) diluted at 1:500.

Antigen Retrieval: Tris-EDTA buffer, pH 9.0, 15 min



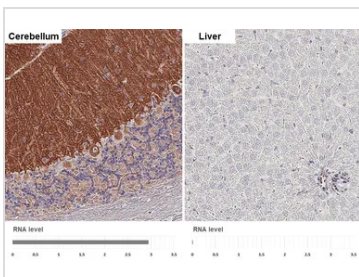
### GTx642573 IHC-P Image

mGluR1 antibody [HL4127] detects mGluR1 protein by immunohistochemical analysis.

Sample: Paraffin-embedded rat brain.

mGluR1 stained by mGluR1 antibody [HL4127] (GTx642573) diluted at 1:500.

Antigen Retrieval: Tris-EDTA buffer, pH 9.0, 15 min



### GTx642573 IHC-P Image

mGluR1 antibody [HL4127] detects mGluR1 protein by immunohistochemical analysis.

Sample: Paraffin-embedded rat tissues.

mGluR1 stained by mGluR1 antibody [HL4127] (GTx642573) diluted at 1:2500.

Antigen Retrieval: Tris-EDTA buffer, pH 9.0, 15 min

Corresponding RNA levels (RPKM) in the tissues are based on NCBI database.



For full product information, images and publications, please visit our [website](https://www.genetex.com).