



SZABO SCANDIC

Part of Europa Biosite

Produktinformation



Forschungsprodukte & Biochemikalien



Zellkultur & Verbrauchsmaterial



Diagnostik & molekulare Diagnostik



Laborgeräte & Service

Weitere Information auf den folgenden Seiten!
See the following pages for more information!



Lieferung & Zahlungsart

siehe unsere [Liefer- und Versandbedingungen](#)

Zuschläge

- Mindermengenzuschlag
- Trockeneiszuschlag
- Gefahrgutzuschlag
- Expressversand

SZABO-SCANDIC HandelsgmbH

Quellenstraße 110, A-1100 Wien

T. +43(0)1 489 3961-0

F. +43(0)1 489 3961-7

mail@szabo-scandic.com

www.szabo-scandic.com

[linkedin.com/company/szaboscandic](https://www.linkedin.com/company/szaboscandic) 

LSD1 antibody [HL4238]

Cat. No. GTX643071

Host	Rabbit
Clonality	Monoclonal
Isotype	IgG
Applications	WB, ICC/IF, IHC-P
Reactivity	Human, Mouse, Rat

Package
100 µl, 25 µl

Applications

Application Note

*Optimal dilutions/concentrations should be determined by the researcher.

Suggested dilution	Recommended dilution
WB	1:500-1:3000
ICC/IF	Assay dependent
IHC-P	Assay dependent

Not tested in other applications.

Observed MW (kDa) 115 kDa.

Properties

Form	Liquid
Buffer	PBS
Preservative	No preservatives
Storage	Store as concentrated solution. Centrifuge briefly prior to opening vial. For short-term storage (1-2 weeks), store at 4°C. For long-term storage, aliquot and store at -20°C or below. Avoid multiple freeze-thaw cycles.
Concentration	1 mg/ml
Immunogen	Synthetic peptide of human LSD1.
Purification	Affinity purified by Protein A.
Conjugation	Unconjugated

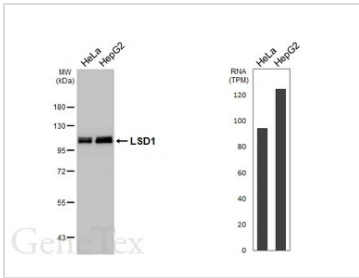
Note

For laboratory research use only. Not for any clinical, therapeutic, or diagnostic use in humans or animals. Not for animal or human consumption.

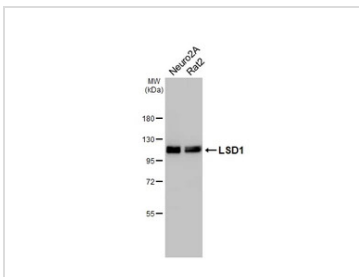
Purchasers shall not, and agree not to enable third parties to, analyze, copy, reverse engineer or otherwise attempt to determine the structure or sequence of the product.



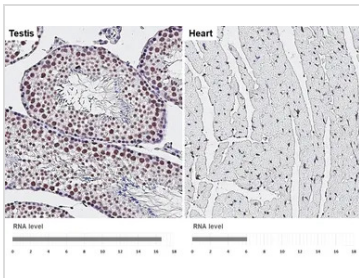
For full product information, images and publications, please visit our [website](#).

DATA IMAGES

GTX643071 WB Image

Various whole cell extracts (30 µg) were separated by 7.5% SDS-PAGE, and the membrane was blotted with LSD1 antibody [HL4238] (GTX643071) diluted at 1:1000. The HRP-conjugated anti-rabbit IgG antibody (GTX213110-01) was used to detect the primary antibody. Corresponding RNA expression data are based on Human Protein Atlas program.


GTX643071 WB Image

Various whole cell extracts (30 µg) were separated by 7.5% SDS-PAGE, and the membrane was blotted with LSD1 antibody [HL4238] (GTX643071) diluted at 1:1000. The HRP-conjugated anti-rabbit IgG antibody (GTX213110-01) was used to detect the primary antibody.


GTX643071 IHC-P Image

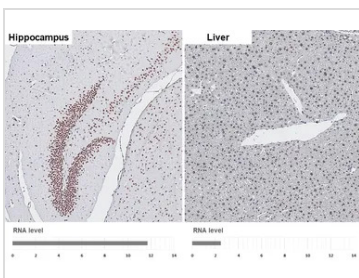
LSD1 antibody [HL4238] detects LSD1 protein by immunohistochemical analysis.

Sample: Paraffin-embedded mouse tissues.

LSD1 stained by LSD1 antibody [HL4238] (GTX643071) diluted at 1:2000.

Antigen Retrieval: Citrate buffer, pH 6.0, 15 min

Corresponding RNA levels (RPKM) in the tissues are based on NCBI database.


GTX643071 IHC-P Image

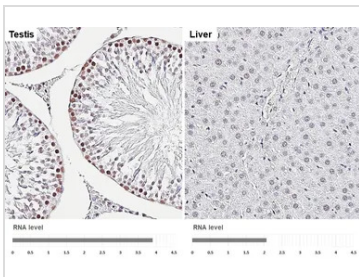
LSD1 antibody [HL4238] detects LSD1 protein by immunohistochemical analysis.

Sample: Paraffin-embedded mouse tissues.

LSD1 stained by LSD1 antibody [HL4238] (GTX643071) diluted at 1:2000.

Antigen Retrieval: Citrate buffer, pH 6.0, 15 min

Corresponding RNA levels (RPKM) in the tissues are based on NCBI database.


GTX643071 IHC-P Image

LSD1 antibody [HL4238] detects LSD1 protein by immunohistochemical analysis.

Sample: Paraffin-embedded rat tissues.

LSD1 stained by LSD1 antibody [HL4238] (GTX643071) diluted at 1:1600.

Antigen Retrieval: Citrate buffer, pH 6.0, 15 min

Corresponding RNA levels (RPKM) in the tissues are based on NCBI database.



For full product information, images and publications, please visit our [website](https://www.genetex.com).