



SZABO SCANDIC

Part of Europa Biosite

Produktinformation



Forschungsprodukte & Biochemikalien



Zellkultur & Verbrauchsmaterial



Diagnostik & molekulare Diagnostik



Laborgeräte & Service

Weitere Information auf den folgenden Seiten!
See the following pages for more information!



Lieferung & Zahlungsart

siehe unsere [Liefer- und Versandbedingungen](#)

Zuschläge

- Mindermengenzuschlag
- Trockeneiszuschlag
- Gefahrgutzuschlag
- Expressversand

SZABO-SCANDIC HandelsgmbH

Quellenstraße 110, A-1100 Wien

T. +43(0)1 489 3961-0

F. +43(0)1 489 3961-7

mail@szabo-scandic.com

www.szabo-scandic.com

[linkedin.com/company/szaboscandic](https://www.linkedin.com/company/szaboscandic) 

Human IL1 Receptor 2 protein, His tag (active)

Cat No. GTX67059-pro

Application	Functional Assay
Species	Human

Package

10 µg

APPLICATION

Application Note

Measured by its ability to inhibit proliferation using D10.G4.1 mouse helper T cells. The ED₅₀ for this effect is less or equal to 400 ng/ml with IL-1 beta.

Observed MW	40-57 kDa.
--------------------	------------

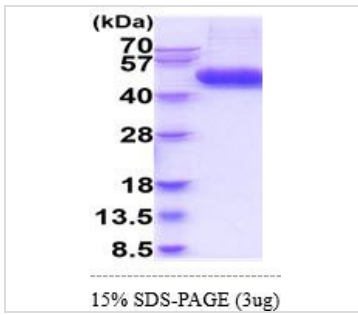
PROPERTIES

Form	Liquid
Buffer	PBS (pH7.4), 10% Glycerol
Preservative	No preservative
Storage	Store as concentrated solution. Centrifuge briefly prior to opening vial. For short-term storage (1-2 weeks), store at 4°C. For long-term storage, aliquot and store at -20°C or below. Avoid multiple freeze-thaw cycles.
Concentration	0.5 mg/ml
Region/Sequence	C-terminal His-Tag; Length: 338 a.a. Sequence: FTLQPAAHTG AARSCFRFRGR HYKREFRLEG EPVALRCPQV PYWLWASVSP RINLTWHKND SARTVPGEEE TRMWAQDGAL WLLPALQEDS GTYVCTTRNA SYCDKMSIEL RVFENTDAFL PFISYPQILT LSTSGVLVCP DLSEFTRDKT DVKIQWYKDS LLLDKDNEKF LSVRGTTLL VHDVALEDAG YYRCVLTFAH EGQQYNITRS IELRIKKKKE ETIPVIISPL KTISASLGSR LTIPCKVFLG TGTPLTMLW WTANDTHIES AYPGGRVTEG PRQEYSENNE NYIEVPLIFD PVTREDLHMD FKCVHNTLS FQTLRTTVKE LEHHHHHH
Expression System	Baculovirus
Purity	> 90% by SDS-PAGE.
Endotoxin	< 1.0 EU/µg (determined by LAL method)
Conjugation	Unconjugated
Note	For In vitro laboratory use only. Not for any clinical, therapeutic, or diagnostic use in humans or animals. Not for animal or human consumption.



For full product information, images and publications, please visit our [website](#).

DATA IMAGES

**GTX67059-pro Image**

3 μ g of GTX67059-pro Human IL1 Receptor 2 protein (active) by SDS-PAGE under reducing condition and visualized by coomassie blue stain



For full product information, images and publications, please visit our [website](#).