



SZABO SCANDIC

Part of Europa Biosite

Produktinformation



Forschungsprodukte & Biochemikalien



Zellkultur & Verbrauchsmaterial



Diagnostik & molekulare Diagnostik



Laborgeräte & Service

Weitere Information auf den folgenden Seiten!
See the following pages for more information!



Lieferung & Zahlungsart

siehe unsere [Liefer- und Versandbedingungen](#)

Zuschläge

- Mindermengenzuschlag
- Trockeneiszuschlag
- Gefahrgutzuschlag
- Expressversand

SZABO-SCANDIC HandelsgmbH

Quellenstraße 110, A-1100 Wien

T. +43(0)1 489 3961-0

F. +43(0)1 489 3961-7

mail@szabo-scandic.com

www.szabo-scandic.com

[linkedin.com/company/szaboscandic](https://www.linkedin.com/company/szaboscandic) 

ALK antibody [5A4]

Cat. No. GTX73978

Host	Mouse
Clonality	Monoclonal
Isotype	IgG1
Application	IHC-P
Reactivity	Human

Package
500 µl

PRODUCT

Summary

Anaplastic large cell lymphoma (ALCL) is usually composed of large pleomorphic cells, which express CD30 antigen and the epithelial membrane antigen (EMA). These tumor cells tend to occur in younger patients and may be associated with cutaneous and extranodal involvement. Large cell lymphoma account for approximately 25% of all non-Hodgkin lymphomas in children and young adults.

APPLICATION

Application Note

*Optimal dilutions/concentrations should be determined by the researcher.

Suggested dilution	Recommended dilution
IHC-P	1:25-1:140

Not tested in other applications.

Calculated MW 176 kDa. ([Note](#))

PROPERTIES

Form	Liquid
Buffer	Tissue culture supernatant
Preservative	0.09% sodium azide
Storage	Store as concentrated solution. Centrifuge briefly prior to opening vial. Store at 4°C.
Concentration	Batch dependent
Immunogen	Prokaryotic recombinant protein corresponding to a region which spans the tyrosine kinase catalytic domain and part of the C-terminus of NPM-ALK transcript (419-520 aa).
Purification	Unpurified
Conjugation	Unconjugated



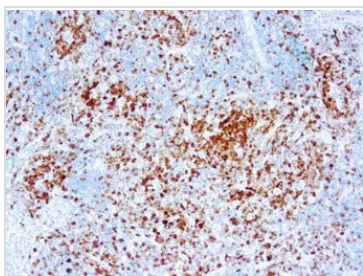
For full product information, images and publications, please visit our [website](#).

For laboratory research use only. Not for any clinical, therapeutic, or diagnostic use in humans or animals. Not for animal or human consumption.

Note

Purchasers shall not, and agree not to enable third parties to, analyze, copy, reverse engineer or otherwise attempt to determine the structure or sequence of the product.

DATA IMAGES



GTX73978 IHC-P Image

IHC-P analysis of human anaplastic lymphoma tissue using GTX73978 ALK antibody [5A4].



For full product information, images and publications, please visit our [website](#).