



# SZABO SCANDIC

Part of Europa Biosite

## Produktinformation



Forschungsprodukte & Biochemikalien



Zellkultur & Verbrauchsmaterial



Diagnostik & molekulare Diagnostik



Laborgeräte & Service

Weitere Information auf den folgenden Seiten!  
See the following pages for more information!



### Lieferung & Zahlungsart

siehe unsere [Liefer- und Versandbedingungen](#)

### Zuschläge

- Mindermengenzuschlag
- Trockeneiszuschlag
- Gefahrgutzuschlag
- Expressversand

### SZABO-SCANDIC Handels GmbH

Quellenstraße 110, A-1100 Wien

T. +43(0)1 489 3961-0

F. +43(0)1 489 3961-7

[mail@szabo-scandic.com](mailto:mail@szabo-scandic.com)

[www.szabo-scandic.com](http://www.szabo-scandic.com)

[linkedin.com/company/szaboscandic](https://www.linkedin.com/company/szaboscandic) 



IBA Lifesciences GmbH  
Rudolf-Wissell-Str. 28  
37079 Goettingen  
Germany  
Tel.: +49 (0) 551-5 06 72-0  
E-mail: [info@iba-lifesciences.com](mailto:info@iba-lifesciences.com)  
[www.iba-lifesciences.com](http://www.iba-lifesciences.com)

## Data Sheet

### pESG-IBA104

Cat. No.: 5-4504-001

Version: 3.0  
Revision Date: 27.07.2021

|                         |  |
|-------------------------|--|
| <b>Description</b>      | StarGate Acceptor Vector for stable and non-replicative transient expression in mammalian cells. It carries the human cytomegalovirus (CMV) immediate-early promoter for high-level expression and the SV40 ori for episomal replication in cell lines that are latently infected with SV40 or that express the SV40 large T antigen (e.g., HEK293T, COS-1, COS-7). The expressed recombinant protein will be localized in the medium. |
| <b>Affinity tag</b>     | Twin-Strep-tag® is fused to the N-terminus of the recombinant protein.   |
| <b>Secretion</b>        | BM40 secretory signal peptide is encoded for the transfer of the expressed protein into the medium. During the translocation the signal peptide is removed by endogenous proteases.  |
| <b>Cloning Strategy</b> | Cloning into StarGate Acceptor Vectors has to be done with the restriction enzyme Esp3I. There is no Multiple Cloning Site (MCS) available that can be used for the integration of the gene of interest instead (see manual).  |
| <b>Resistance</b>       | Ampicillin: for selection of transformed <i>E. coli</i> cells<br>Neomycin: for selection of stable cell lines  |
| <b>Form</b>             | 5 µg, dissolved in 20 µl TE buffer, pH 8.0: 10 mM Tris/HCl, 1 mM EDTA  |
| <b>Concentration</b>    | 250 ng/µl  |
| <b>Stability</b>        | 12 months after shipping   |
| <b>Storage</b>          | recommended: 2-8 °C for frequent usage, -20 °C for long-term storage   |
| <b>Shipping</b>         | room temperature   |
| <b>Hazards</b>          | Product is not classified as hazardous according to (EC) No 1272/2008 [CLP].<br>A Material Safety Data Sheet is provided.  |

#### For research use only

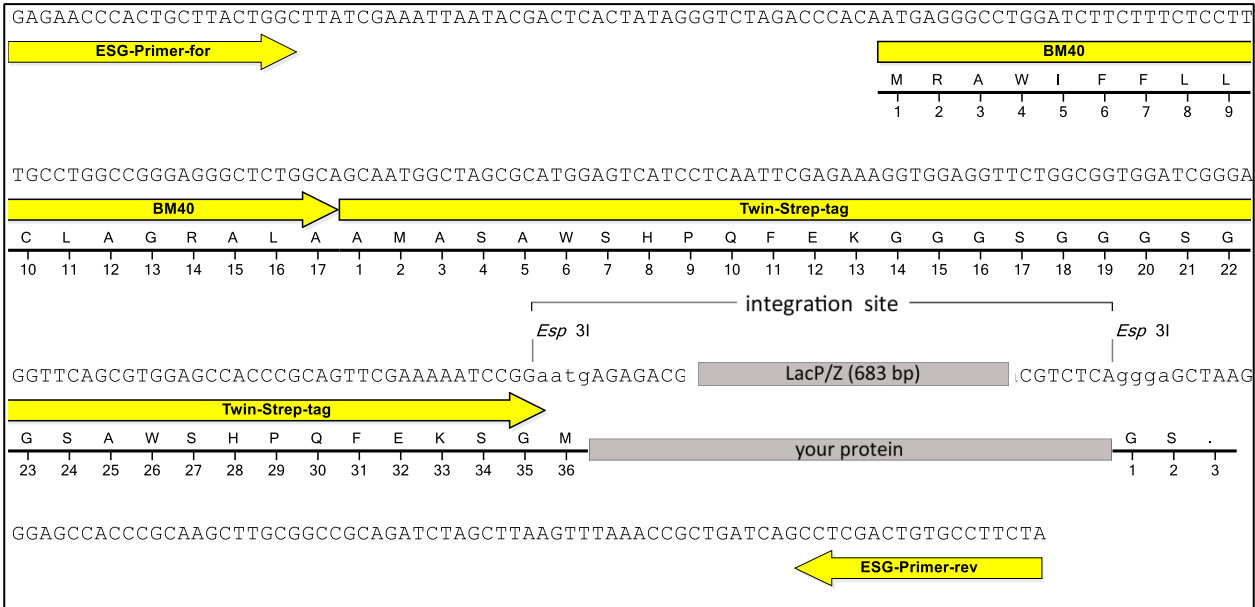
##### Trademark information

The owners of trademarks marked by "®" or "TM" are identified at <http://www.iba-lifesciences.com/patents.html>. Registered names, trademarks, etc. used in this document, even when not specifically marked as such, are not to be considered unprotected by law.

##### Important licensing information

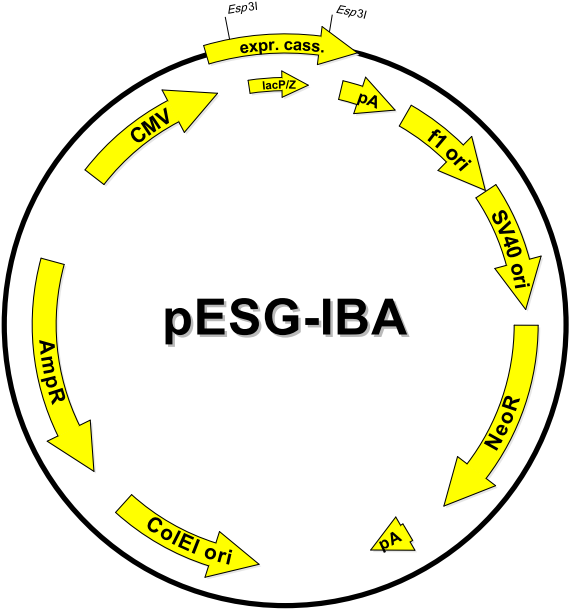
This product is covered by intellectual property (IP) rights and on completion of the sale IBA Lifesciences grants respective Limited Use Label Licenses to purchaser. IP rights and Limited Use Label Licenses for said technology are further described and identified at <http://www.iba-lifesciences.com/patents.html> or upon inquiry at [info@iba-lifesciences.com](mailto:info@iba-lifesciences.com) or at IBA Lifesciences GmbH, Rudolf-Wissell-Str. 28, 37079 Goettingen, Germany. By use of this product the purchaser accepts the terms and conditions of all applicable Limited Use Label Licenses.

Expression cassette of pESG-IBA104



LacP/Z cassette = contains LacZ alpha fragment under control of a separate promoter, which allows alpha complementation of LacZ mutations such as LacZΔM15 as in *E. coli* DH5α or TOP10.

your protein = after StarGate cloning using *Esp3I* your gene of interest will be located here



| Features                    | from bp | to bp | Sequencing primer                                |
|-----------------------------|---------|-------|--|
| f1 origin                   | 259     | 687   | ESG-Primer-for<br>5' - GAGAACCCACTGCTTACTGGC -3' |
| SV40 ori                    | 692     | 1035  |  |
| Neomycin resistance gene    | 1097    | 1891  | ESG-Primer-rev<br>5' - TAGAAGGCACAGTCGAGG -3'    |
| ColEI ori                   | 2637    | 3222  |  |
| Ampicillin resistance gene  | 3393    | 4253  |  |
| CMV promoter                | 4621    | 5208  |  |
| forward primer binding site | 5221    | 5241  |  |
| BM40 signal sequence        | 5284    | 5334  |  |
| Twin-Strep-tag®             | 5335    | 5439  |  |
| LacZ alpha fragment         | 5668    | 6069  |  |
| reverse primer binding site | 6200    | 6217  |  |
| polyA signal sequence       | 1       | 213   |  |
| total vector length         |         | 6217  |  |