



# SZABO SCANDIC

Part of Europa Biosite

## Produktinformation



Forschungsprodukte & Biochemikalien



Zellkultur & Verbrauchsmaterial



Diagnostik & molekulare Diagnostik



Laborgeräte & Service

Weitere Information auf den folgenden Seiten!  
See the following pages for more information!



### Lieferung & Zahlungsart

siehe unsere [Liefer- und Versandbedingungen](#)

### Zuschläge

- Mindermengenzuschlag
- Trockeneiszuschlag
- Gefahrgutzuschlag
- Expressversand

### SZABO-SCANDIC HandelsgmbH

Quellenstraße 110, A-1100 Wien

T. +43(0)1 489 3961-0

F. +43(0)1 489 3961-7

[mail@szabo-scandic.com](mailto:mail@szabo-scandic.com)

[www.szabo-scandic.com](http://www.szabo-scandic.com)

[linkedin.com/company/szaboscandic](https://www.linkedin.com/company/szaboscandic) 



IBA Lifesciences GmbH  
Rudolf-Wissell-Str. 28  
37079 Goettingen  
Germany  
Tel.: +49 (0) 551-5 06 72-0  
E-mail: [info@iba-lifesciences.com](mailto:info@iba-lifesciences.com)  
[www.iba-lifesciences.com](http://www.iba-lifesciences.com)

## Data Sheet

### pCSG-IBA104

Cat. No.: 5-5104-001

Version: 3.0  
Revision Date: 28.07.2021

<b>Description</b>	StarGate Acceptor Vector for transient expression as well as for generation of stable mammalian cell lines. Extrachromosomal replication in mammalian cells could occur either by origin of replication from Epstein-Barr Virus (oriP) or by SV40 ori. For the former the vector provides the EBNA-1 gene and for the latter the cell line has to be latently infected with SV40 or express the SV40 large T antigen (e.g., HEK293T, COS-1, COS-7). Stable cell lines can be selected by the neomycin resistance gene (NeoR). In addition, the human cytomegalovirus (CMV) immediate-early promoter enables a high-level expression in a wide range of mammalian cells. The expressed recombinant protein will be secreted into the medium.
<b>Affinity tag</b>	Twin-Strep-tag® is fused to the N-terminus of the recombinant protein.
<b>Secretion</b>	BM40 secretory signal peptide is encoded for the transfer of the expressed protein into the medium. During the translocation the signal peptide is removed by endogenous proteases.
<b>Cloning Strategy</b>	Cloning into StarGate Acceptor Vectors has to be done with the restriction enzyme Esp3I. There is no Multiple Cloning Site (MCS) available that can be used for the integration of the gene of interest instead (see manual).
<b>Resistance</b>	Ampicillin: for selection of transformed E. coli cells Neomycin: for selection of stable cell lines
<b>Form</b>	5 µg, dissolved in 20 µl TE buffer, pH 8.0: 10 mM Tris/HCl, 1 mM EDTA
<b>Concentration</b>	250 ng/µl
<b>Stability</b>	12 months after shipping
<b>Storage</b>	recommended: 2-8 °C for frequent usage, -20 °C for long-term storage
<b>Shipping</b>	room temperature
<b>Hazards</b>	Product is not classified as hazardous according to (EC) No 1272/2008 [CLP]. A Material Safety Data Sheet is provided.

#### For research use only

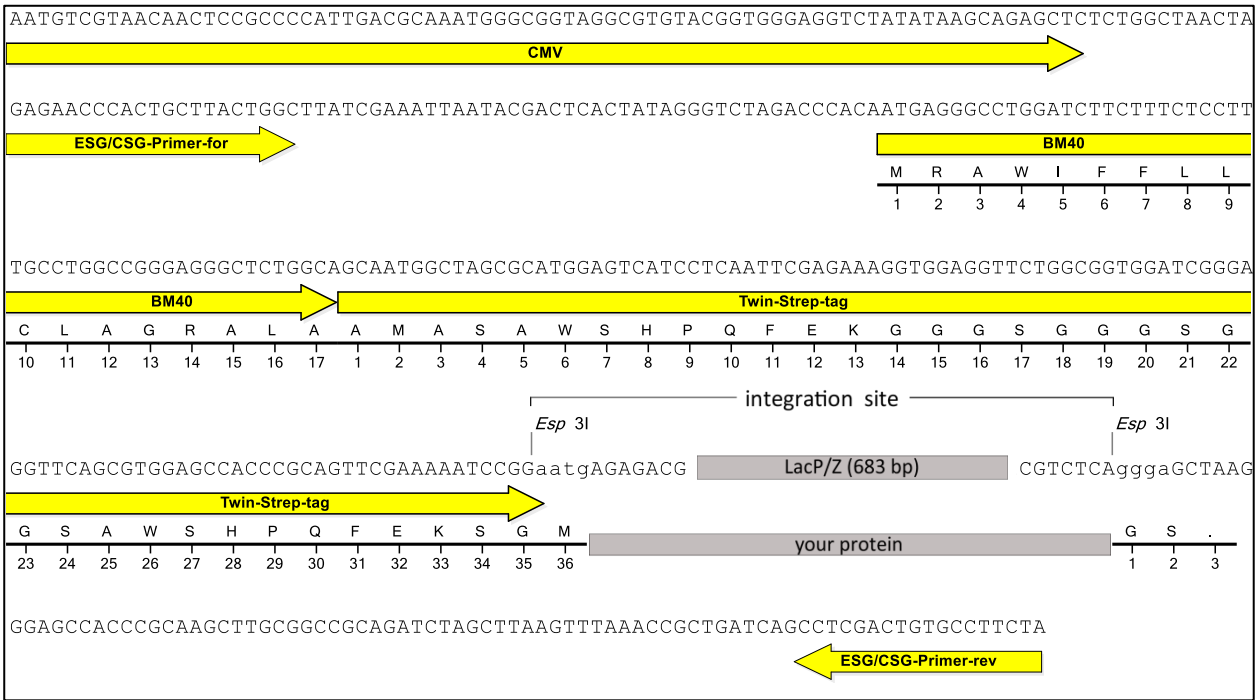
##### Trademark information

The owners of trademarks marked by "®" or "TM" are identified at <http://www.iba-lifesciences.com/patents.html>. Registered names, trademarks, etc. used in this document, even when not specifically marked as such, are not to be considered unprotected by law.

##### Important licensing information

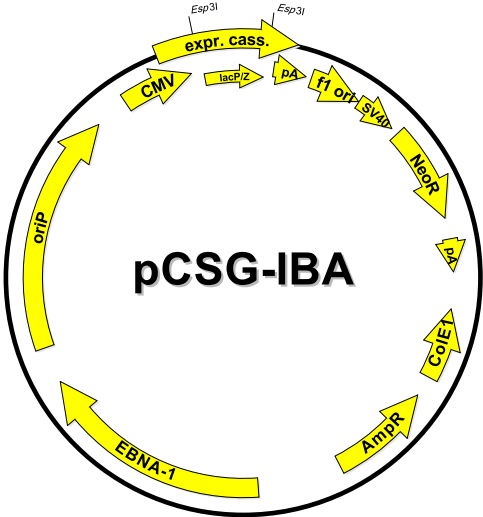
This product is covered by intellectual property (IP) rights and on completion of the sale IBA Lifesciences grants respective Limited Use Label Licenses to purchaser. IP rights and Limited Use Label Licenses for said technology are further described and identified at <http://www.iba-lifesciences.com/patents.html> or upon inquiry at [info@iba-lifesciences.com](mailto:info@iba-lifesciences.com) or at IBA Lifesciences GmbH, Rudolf-Wissell-Str. 28, 37079 Goettingen, Germany. By use of this product the purchaser accepts the terms and conditions of all applicable Limited Use Label Licenses.

Expression cassette of pCSG-IBA104



LacP/Z cassette = contains LacZ alpha fragment under control of a separate promoter, which allows alpha complementation of *LacZ* mutations such as *LacZΔM15* as in *E. coli* DH5α or TOP10.

your protein = after StarGate cloning using *Esp3I* your gene of interest will be located here



Features	from bp	to bp	Sequencing primer
polyA signal sequence	1	213	ESG/CSG-Primer-for
f1 origin	259	687	
SV40 ori	692	1035	5' - GAGAACCCACTGCTTACTGGC -3'
Neomycin resistance gene	1097	1891	ESG/CSG-Primer-rev
ColEI ori	2637	3222	
Ampicillin resistance gene	4253	3393	5' - TAGAAGGCACAGTCGAGG -3'
EBNA-1	4944	6869	
oriP, episomal replication origin	7170	9145	
CMV promoter	9426	10013	
forward primer binding site	10026	10046	
BM40 signal sequence	10089	10142	
Twin-Strep-tag®	10143	10244	
LacZ alpha fragment	10473	10874	
reverse primer binding site	11005	11022	
total vector length		11022	