



SZABO SCANDIC

Part of Europa Biosite

Produktinformation



Forschungsprodukte & Biochemikalien



Zellkultur & Verbrauchsmaterial



Diagnostik & molekulare Diagnostik



Laborgeräte & Service

Weitere Information auf den folgenden Seiten!
See the following pages for more information!



Lieferung & Zahlungsart

siehe unsere [Liefer- und Versandbedingungen](#)

Zuschläge

- Mindermengenzuschlag
- Trockeneiszuschlag
- Gefahrgutzuschlag
- Expressversand

SZABO-SCANDIC HandelsgmbH

Quellenstraße 110, A-1100 Wien

T. +43(0)1 489 3961-0

F. +43(0)1 489 3961-7

mail@szabo-scandic.com

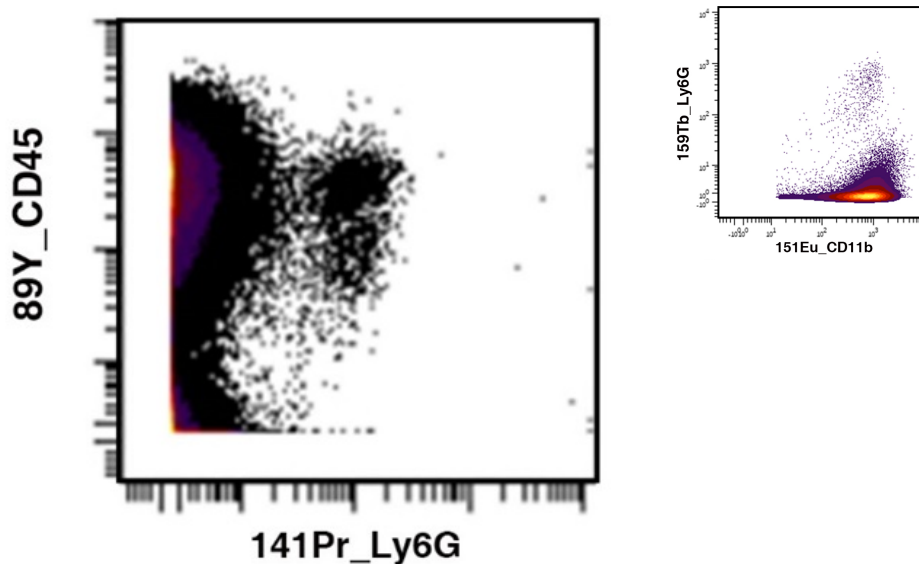
www.szabo-scandic.com

[linkedin.com/company/szaboscandic](https://www.linkedin.com/company/szaboscandic) 

Anti-Mouse Ly-6G In Vivo Antibody - Low Endotoxin (1A8) [ICH1089]

SKU: ICH1089

Link: <https://www.ichor.bio/product/anti-ly-6g-in-vivo-antibody-low-endotoxin-1a8-ich1089/>



Product Information

Category: anti-mouse, Low Endotoxin, Ultra Low Endotoxin

Size: 1mg, 5mg, 25mg, 50mg, 100mg

Endotoxin Level: Low, Ultra low

Product Description

Product Benefits:

ichorbio's anti-Ly-6G In Vivo Antibody - Low Endotoxin (1A8) is manufactured in a cGMP compliant facility. ichorbio's low endotoxin antibodies have half the endotoxin of comparable antibodies from our competitors (<http://www.ichor.bio/comparing-ichorbio-to-bio-x-cell-biolegend/>), at less than 1.0 EU/mg. If ichorbio's low endotoxin antibodies are not low enough we also offer ultra low endotoxin antibodies which have even less endotoxin (<0.75EU/mg) at an even higher purity (98% versus 95%). ichorbio offers Amazon vouchers or donations to the NC3Rs for reviews of this product: click [here](#)

(<http://www.ichor.bio/amazon-vouchers/>) for more information. ichorbio: the best antibodies for *in vivo* research.

Target:

Ly-6G

Clone:

1A8

Isotype:

Rat IgG2a

Other Names:

Lymphocyte antigen 6 complex, locus G

Host:

Rat

Species Reactivity:

Mouse

Specificity:

Anti-Ly-6G In Vivo Antibody - Low Endotoxin (1A8) recognizes an epitope on Mouse Ly-6G. Unlike clone RB6-8C5 antibody, the 1A8 antibody reacts specifically with mouse Ly6G with no reported cross-reactivity with Ly6C

Purification Method:

This monoclonal antibody was purified using multi-step affinity chromatography methods such as Protein A or G depending on the species and isotype.

Antigen Distribution:

Expressed on the majority of myeloid cells in bone marrow and peripheral granulocytes.

Background:

Ly-6G is a 21-25 kD GPI-anchored protein, is expressed on the majority of myeloid cells in bone marrow and peripheral granulocytes.

Immunogen:

Mouse Ly-6G transfected EL-4J cell line

Concentration:

1.0 mg/ml

Formulation:

0.01 M phosphate buffered saline (PBS) pH 7.2, 150 mM NaCl with no carrier protein, potassium or preservatives added. BSA and Azide free.

Purity:

>95% by SDS-PAGE and HPLC

>98% by SDS-PAGE and HPLC

Endotoxin:

≤ 1.0 EU/mg as determined by the LAL method
≤ 0.75 EU/mg as determined by the LAL method

Aggregation:

Aggregation level ≤ 5%
Aggregation level ≤ 1%

IMPACT Pathogen Test:

We use the IMPACT test generated by IDEXX Laboratories to guarantee our Ultra Low Endotoxin antibodies are pathogen free. Our rat antibodies are tested for: Mycoplasma spp Mycoplasma pulmonis Pneumonia virus of mice Kilham's rat virus Toolan's H1 virus Rat parvovirus Lymphocytic choriomeningitis virus Rat cytomegalovirus Sendai virus Rat coronavirus Sialodacryoadenitis virus Rat minute virus Seoul virus Mouse adenovirus Reovirus 3 Rat theilovirus

Storage:

anti-Ly-6G In Vivo Antibody - Low Endotoxin (1A8) is stable for at least one week when stored sterile at 2-8°C. For long term storage aseptically aliquot in working volumes without diluting and store at -80°C. Avoid Repeated Freeze Thaw Cycles.

Applications:

IHC (FFPE), IHC (Frozen), Flow Cytometry, Western Blot, In vivo Depletion

Application Notes:

Each investigator should determine their own optimal working dilution for specific applications.

Use:

Products are for research use only. Not for use in diagnostic or therapeutic procedures.

Isotype Control:

[Rat IgG2a In Vivo Isotype Control - Low Endotoxin \[1-1\] \(ICH2244\)](http://www.ichor.bio/product/Rat-IgG2a-In-Vivo-Isotype-Control-Low-Endotoxin-1-1-ICH2244)
[. \(http://www.ichor.bio/product/Rat-IgG2a-In-Vivo-Isotype-Control-Low-Endotoxin-1-1-ICH2244\)](http://www.ichor.bio/product/Rat-IgG2a-In-Vivo-Isotype-Control-Low-Endotoxin-1-1-ICH2244)

Related Antibody:

[Anti-Ly-6G In Vivo Antibody - Ultra Low Endotoxin \[1A8\] \(ICH1089\)](http://www.ichor.bio/product/Anti-Ly-6G-In-Vivo-Antibody-Low-Endotoxin-1A8-ICH1089)
[. \(http://www.ichor.bio/product/Anti-Ly-6G-In-Vivo-Antibody-Low-Endotoxin-1A8-ICH1089\)](http://www.ichor.bio/product/Anti-Ly-6G-In-Vivo-Antibody-Low-Endotoxin-1A8-ICH1089)

Antibodies against the same target:

[Anti-Ly-6G/Ly-6C In Vivo Antibody - Low Endotoxin \[RB6-8C5\] \(ICH1131\)](http://www.ichor.bio/product/Anti-Ly-6G/Ly-6C-In-Vivo-Antibody-Low-Endotoxin-RB6-8C5-ICH1131)
[. \(http://www.ichor.bio/product/Anti-Ly-6G/Ly-6C-In-Vivo-Antibody-Low-Endotoxin-RB6-8C5-ICH1131\)](http://www.ichor.bio/product/Anti-Ly-6G/Ly-6C-In-Vivo-Antibody-Low-Endotoxin-RB6-8C5-ICH1131), [Anti-Ly-6G/Ly-6C In Vivo Antibody - Ultra Low Endotoxin \[RB6-8C5\] \(ICH1131UL\)](http://www.ichor.bio/product/Anti-Ly-6G/Ly-6C-In-Vivo-Antibody-Low-Endotoxin-RB6-8C5-ICH1131UL) [. \(http://www.ichor.bio/product/Anti-Ly-6G/Ly-6C-In-Vivo-Antibody-Low-Endotoxin-RB6-8C5-ICH1131\)](http://www.ichor.bio/product/Anti-Ly-6G/Ly-6C-In-Vivo-Antibody-Low-Endotoxin-RB6-8C5-ICH1131), [Anti-Ly-6C In Vivo Antibody - Low Endotoxin \[HK1.4\] \(ICH1111\)](http://www.ichor.bio/product/Anti-Ly-6C-In-Vivo-Antibody-Low-Endotoxin-HK1.4-ICH1111) [. \(http://www.ichor.bio/product/Anti-Ly-6C-In-Vivo-Antibody-Low-Endotoxin-HK1.4-ICH1111\)](http://www.ichor.bio/product/Anti-Ly-6C-In-Vivo-Antibody-Low-Endotoxin-HK1.4-ICH1111)

Antibody-Low-Endotoxin-HK1.4-ICH1111), Anti-Ly-6C In Vivo Antibody - Low Endotoxin [7B10]_(ICH1095)_(<http://www.ichor.bio/product/Anti-Ly-6C-In-Vivo-Antibody-Low-Endotoxin-7B10-ICH1095>).