



# SZABO SCANDIC

Part of Europa Biosite

## Produktinformation



Forschungsprodukte & Biochemikalien



Zellkultur & Verbrauchsmaterial



Diagnostik & molekulare Diagnostik



Laborgeräte & Service

Weitere Information auf den folgenden Seiten!  
See the following pages for more information!



### Lieferung & Zahlungsart

siehe unsere [Liefer- und Versandbedingungen](#)

### Zuschläge

- Mindermengenzuschlag
- Trockeneiszuschlag
- Gefahrgutzuschlag
- Expressversand

### SZABO-SCANDIC HandelsgmbH

Quellenstraße 110, A-1100 Wien

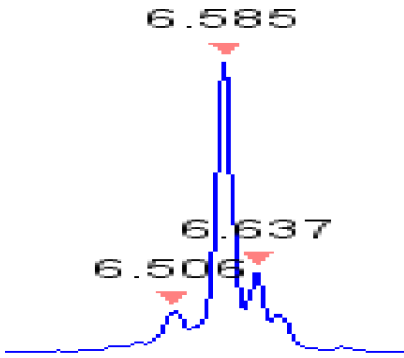
T. +43(0)1 489 3961-0

F. +43(0)1 489 3961-7

[mail@szabo-scandic.com](mailto:mail@szabo-scandic.com)

[www.szabo-scandic.com](http://www.szabo-scandic.com)

[linkedin.com/company/szaboscandic](https://www.linkedin.com/company/szaboscandic) 



## Panitumumab Biosimilar – Research Grade [ICH4028]

### Description

## Bulk Panitumumab Biosimilar – Research Grade

#### Product Benefits:

ichorbio's Panitumumab Biosimilar – Research Grade is manufactured in a cGMP compliant facility. ichorbio: the best antibodies for *in vivo* research.

#### Size:

ichorbio's research grade panitumumab biosimilar is available in the following sizes:

5mg, 10mg, 20mg, 50mg, 100mg

ichorbio regularly manufactures bulk multi-gram amounts of our panitumumab biosimilar – please contact us for pricing.

#### Target:

EGFR

#### Clone:

n/a

#### Isotype:

IgG2 kappa

#### Other Names:

Epidermal growth factor receptor, Proto-oncogene c-ErbB-1, Receptor tyrosine-protein kinase erbB-1, ERBB, ERBB1, HER1

---

Host:

Humanized

Species Reactivity:

Human

Specificity:

Detects human EGFR. This non-therapeutic antibody uses the same variable region sequence as the therapeutic antibody Panitumumab. This panitumumab biosimilar is for research use only (RUO).

Purification Method:

This monoclonal antibody was purified using multi-step affinity chromatography methods such as Protein A or G depending on the species and isotype.

Background:

Panitumumab biosimilar is a recombinant, human IgG2 kappa monoclonal antibody that binds specifically to the human epidermal growth factor receptor (EGFR). It has an approximate molecular weight of 147 kDa and is produced in genetically engineered mammalian (Chinese hamster ovary) cells.

Concentration:

1.0 – 5.0 mg/ml

Formulation:

Sterile, colorless liquid with a pH value of 5.6 to 6.0, containing sodium chloride and sodium acetate. BSA and Azide free.

Purity:

>95% by SDS-PAGE and HPLC

Endotoxin:

? 0.75 EU/mg as determined by the LAL method

Storage:

This antibody is stable for at least 4 weeks when stored at 2-8°C. For long term storage, aliquot in working volumes without diluting and store at – 20°C or -80°C. Avoid repeated freeze thaw cycles.

Applications:

Functional Assays

---

## Application Notes:

Each investigator should determine their own optimal working dilution for specific applications.

### Use:

ichorbio's panitumumab biosimilar is for research use only (RUO): it is not for diagnostic or therapeutic procedures and cannot be purchased by patients.

### Isotype Control:

[Bulk Human IgG2 Isotype Control \(IB2\) \[ICH2255\]](#)