



# SZABO SCANDIC

Part of Europa Biosite

## Produktinformation



Forschungsprodukte & Biochemikalien



Zellkultur & Verbrauchsmaterial



Diagnostik & molekulare Diagnostik



Laborgeräte & Service

Weitere Information auf den folgenden Seiten!  
See the following pages for more information!



### Lieferung & Zahlungsart

siehe unsere [Liefer- und Versandbedingungen](#)

### Zuschläge

- Mindermengenzuschlag
- Trockeneiszuschlag
- Gefahrgutzuschlag
- Expressversand

### SZABO-SCANDIC HandelsgmbH

Quellenstraße 110, A-1100 Wien

T. +43(0)1 489 3961-0

F. +43(0)1 489 3961-7

[mail@szabo-scandic.com](mailto:mail@szabo-scandic.com)

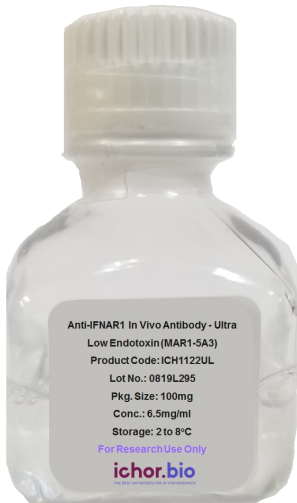
[www.szabo-scandic.com](http://www.szabo-scandic.com)

[linkedin.com/company/szaboscandic](https://www.linkedin.com/company/szaboscandic) 

**Name:** Belatacept Biosimilar - Research Grade [ICH5192]

**SKU:** ICH5192

**Categories:** [Antibodies](#), [Biosimilar Antibodies](#), [Low Endotoxin](#)



**Product price:** \$350.00 – \$3,225.00

## Product Details

# Belatacept Biosimilar - Research Grade

Product Benefits:

ichorbio's belatacept Biosimilar for Research Use Only (RUO) and not for therapeutic use.

Target:

CTLA-4 Fc Fusion Protein

Size:

ichorbio's belatacept biosimilar is available in the following sizes: 1mg, 5mg, 10mg, 20mg

Isotype:

Human IgG1-Kappa

Host:

CHO Cells

Species Reactivity:

Human

Background:

Uses the same sequence as the therapeutic antibody belatacept

Specificity:

Detects human CTLA-4.

Purification Method:

This monoclonal antibody was purified using multi-step affinity chromatography methods such as Protein A or G depending on the species and isotype.

Concentration:

5mg/ml

Formulation:

Sterile, preservative-free, solution in PBS. BSA and Azide free.

Purity:

>95% by SDS-PAGE

Endotoxin:

? 1.0 EU/mg as determined by the LAL method

Storage:

This antibody is stable for at least 4 weeks when stored at 2-8°C. For long term storage, aliquot in working volumes without diluting and store at – 20°C or -80°C. Avoid repeated freeze thaw cycles.

Applications:

Functional Assays

Application Notes:

This biosimilar is strictly for research use only (RUO); it is not for diagnostic or therapeutic procedures and cannot be purchased by patients.

### **Additional information:**

**Weight** 141 kg

**Dimensions** 141 × 114 × 141 cm

**Size:** [1mg](#), [5mg](#), [10mg](#), [20mg](#)