



SZABO SCANDIC

Part of Europa Biosite

Produktinformation



Forschungsprodukte & Biochemikalien



Zellkultur & Verbrauchsmaterial



Diagnostik & molekulare Diagnostik



Laborgeräte & Service

Weitere Information auf den folgenden Seiten!
See the following pages for more information!



Lieferung & Zahlungsart

siehe unsere [Liefer- und Versandbedingungen](#)

Zuschläge

- Mindermengenzuschlag
- Trockeneiszuschlag
- Gefahrgutzuschlag
- Expressversand

SZABO-SCANDIC HandelsgmbH

Quellenstraße 110, A-1100 Wien

T. +43(0)1 489 3961-0

F. +43(0)1 489 3961-7

mail@szabo-scandic.com

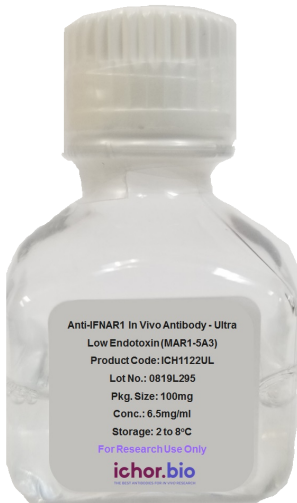
www.szabo-scandic.com

[linkedin.com/company/szaboscandic](https://www.linkedin.com/company/szaboscandic) 

Name: Sotrovimab Biosimilar - Research Grade [ICH5201]

SKU: ICH5201

Categories: [Antibodies](#), [Biosimilar Antibodies](#), [Low Endotoxin](#)



Product price: \$300.00 – \$5,000.00

Product Details

Sotrovimab Biosimilar - Research Grade

Product Benefits:

ichorbio's sotrovimab biosimilar for Research Use Only (RUO) and not for therapeutic use.

Target:

SARS-CoV-2 Spike Protein

Size:

ichorbio's sotrovimab biosimilar is available in the following sizes: 1mg, 5mg, 10mg, 20mg, 50mg, 100mg

Isotype:

Human IgG1-Kappa

Host:

CHO Cells

Species Reactivity:

Human

Background:

Uses the same sequence as the therapeutic antibody sotrovimab

Specificity:

Detects SARS-CoV-2 Spike Protein.

Purification Method:

This monoclonal antibody was purified using multi-step affinity chromatography methods such as Protein A or G depending on the species and isotype.

Concentration:

5mg/ml

Formulation:

Sterile, preservative-free, solution in PBS. BSA and Azide free.

Purity:

>95% by SDS-PAGE

Endotoxin:

? 1.0 EU/mg as determined by the LAL method

Storage:

This antibody is stable for at least 4 weeks when stored at 2-8°C. For long term storage, aliquot in working volumes without diluting and store at – 20°C or -80°C. Avoid repeated freeze thaw cycles.

Applications:

Functional Assays

Application Notes:

This biosimilar is strictly for research use only (RUO); it is not for diagnostic or therapeutic procedures and cannot be purchased by patients.

Additional information:

Weight 141 kg

Dimensions 141 × 114 × 141 cm

Size: [1mg](#), [5mg](#), [10mg](#), [20mg](#), [50mg](#), [100mg](#)