



SZABO SCANDIC

Part of Europa Biosite

Produktinformation



Forschungsprodukte & Biochemikalien



Zellkultur & Verbrauchsmaterial



Diagnostik & molekulare Diagnostik



Laborgeräte & Service

Weitere Information auf den folgenden Seiten!
See the following pages for more information!



Lieferung & Zahlungsart

siehe unsere [Liefer- und Versandbedingungen](#)

Zuschläge

- Mindermengenzuschlag
- Trockeneiszuschlag
- Gefahrgutzuschlag
- Expressversand

SZABO-SCANDIC HandelsgmbH

Quellenstraße 110, A-1100 Wien

T. +43(0)1 489 3961-0

F. +43(0)1 489 3961-7

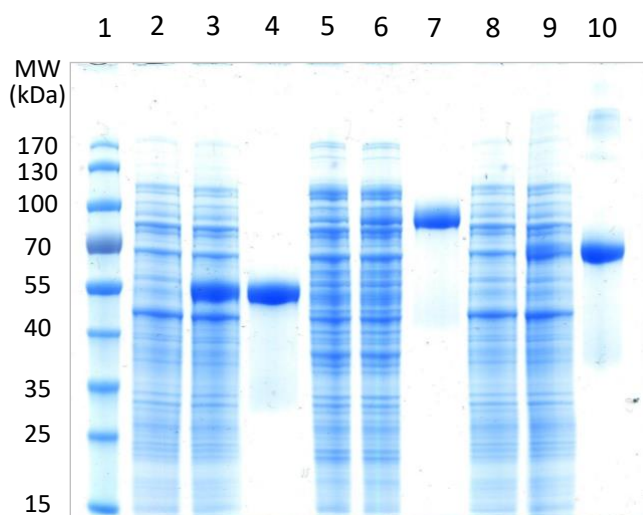
mail@szabo-scandic.com

www.szabo-scandic.com

[linkedin.com/company/szaboscandic](https://www.linkedin.com/company/szaboscandic) 

QuickBlue Protein Stain Brochure

RAPID	15 min non-toxic safe 1-step stain. No organic solvents and no phosphoric acid
SENSITIVE	50 x more sensitive than other rapid stains. Lower limit is 5 ng protein standard
LINEAR RANGE	Very low background enabling accurate quantitation of proteins
HIGH RESOLUTION	Sharp protein bands that you would expect with traditional Coomassie staining
DURABLE	Re-usable up to 3 times, compatible with mass spectrometry applications
SHELF-LIFE	1 year at Room Temperature. No precipitate forms over time so no shaking required!



12% Nusep Tris-Gly gel stained with QuickBlue Protein Stain. Analysis of soluble bacterial lysate in the absence or presence of three different soluble proteins in comparison to the purified protein: Laminin protein fragment (lanes 2-4), Lactoferrin (lanes 5-7), and Bovine Serum Albumin (lanes 8-10).

Simple 1-step Protocol

- Remove the gel from the cassette and place gel into container
- Cover gel with 25 ml QuickBlue stain and leave for minimum 15 minutes or until all weak protein bands are fully developed
- Store the gel in the QuickBlue stain overnight
- Leave in QuickBlue stain or transfer to DI water for gel storage

Ordering Information

Item	Size	Cat-No.
QuickBlue Protein Stain (40 gels)	1 L	L001000