



SZABO SCANDIC

Part of Europa Biosite

Produktinformation



Forschungsprodukte & Biochemikalien



Zellkultur & Verbrauchsmaterial



Diagnostik & molekulare Diagnostik



Laborgeräte & Service

Weitere Information auf den folgenden Seiten!
See the following pages for more information!



Lieferung & Zahlungsart

siehe unsere [Liefer- und Versandbedingungen](#)

Zuschläge

- Mindermengenzuschlag
- Trockeneiszuschlag
- Gefahrgutzuschlag
- Expressversand

SZABO-SCANDIC HandelsgmbH

Quellenstraße 110, A-1100 Wien

T. +43(0)1 489 3961-0

F. +43(0)1 489 3961-7

mail@szabo-scandic.com

www.szabo-scandic.com

[linkedin.com/company/szaboscandic](https://www.linkedin.com/company/szaboscandic) 

AcuteBand Pre-Stained Protein Ladder

User Guide

The AcuteBand Pre-Stained Protein Ladder is a three-color protein standard with 10 pre-stained proteins covering a wide range of molecular weights, from 6.5 to 270 kDa. Designed for monitoring protein separation during PAGE and providing clear electro-transfer to commonly used membranes, this ladder provides the gold-standard in image visualisation.

Storage Conditions:

25° for up to 2 weeks
4°C for up to 3 months
-20°C for long term storage

Avoid repeated freezing and thawing.
Do not apply heat or reducing agent. The AcuteBand Pre-Stained Protein Ladder is provided ready for use.
For Research Use Only.

Storage Buffer:

62.5 mM Tris-H₃PO₄ (pH 7.5 at 25 °C), 1 mM EDTA, 2% SDS, 10 mM DTT, 1 mM NaN₃, 33% glycerol.

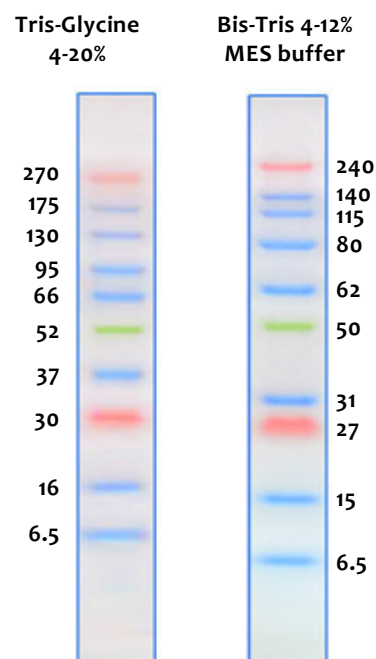
Quality Control:

Under suggested conditions, AcuteBand Pre-Stained Protein Ladder resolves 10 major bands in 4-12% Bis-Tris Gel (MES buffer) and after Western blotting to the nitrocellulose membrane.

High-intensity, 3-colour MW determination:

MW – Orange Green Orange	Buffer Conditions
270 kDa, 52 kDa, 30 kDa	Tris Glycine 4-20%
240 kDa, 50 kDa, 27 kDa	Bis-Tris 4-12% MES

- Ultra-clear and expanded MW range (6.5-270kD)
- Clear separation for high MW proteins
- 100% electroblot transfer efficiency



AcuteBand Pre-Stained Protein Ladder

Standard Protocol

Protocol:

1. Thaw ladder at room temperature
2. Vortex to ensure a homogenous solution
3. Load the ladder on the gel (Refer to recommended volumes below for clear visualization)

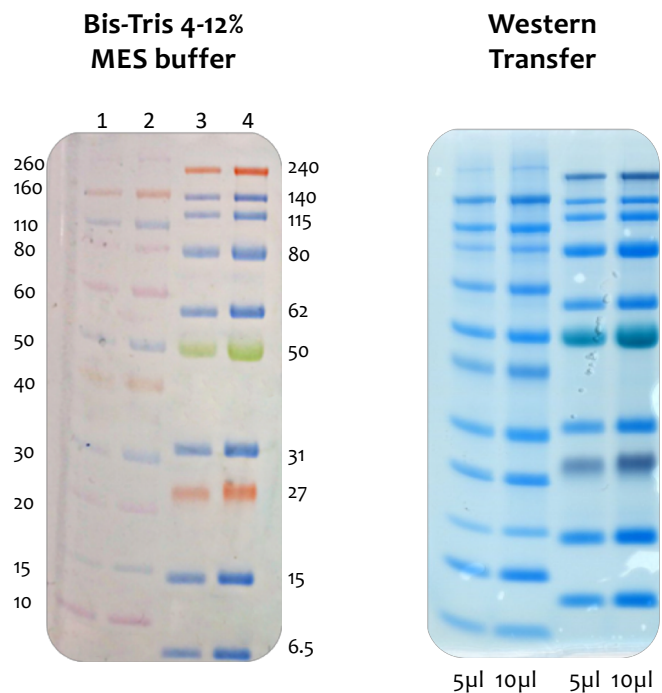
Gel Type	Application	
	Electrophoresis	Western Transfer
15-well mini-gel	3 µl per well	2.5 µl per well
10-well mini-gel	5 µl per well	2.5 µl per well

AcuteBand Pre-Stained Protein Ladder vs. Novex Sharp Pre-stained Protein Standard

Protocol:

Gel buffer: 4-12% Bis-Tris MES SDS
 Western transfer: Stained with Coomassie

- Lane 1: Novex Sharp 5µl
- Lane 2: Novex Sharp 10µl
- Lane 3: AcuteBand Protein Ladder 5µl
- Lane 4: AcuteBand Protein Ladder 10µl



Ordering Information

Item	Size	Cat-No.
0.5 ml AcuteBand Pre-Stained Protein Ladder (2 x 0.25 ml)	2 x 0.25ml	LU5001-0500
2.5 ml AcuteBand Pre-Stained Protein Ladder (10 x 0.25 ml)	10 x 0.25ml	LU5001-2500