



SZABO SCANDIC

Part of Europa Biosite

Produktinformation



Forschungsprodukte & Biochemikalien



Zellkultur & Verbrauchsmaterial



Diagnostik & molekulare Diagnostik



Laborgeräte & Service

Weitere Information auf den folgenden Seiten!
See the following pages for more information!



Lieferung & Zahlungsart

siehe unsere [Liefer- und Versandbedingungen](#)

Zuschläge

- Mindermengenzuschlag
- Trockeneiszuschlag
- Gefahrgutzuschlag
- Expressversand

SZABO-SCANDIC HandelsgmbH

Quellenstraße 110, A-1100 Wien

T. +43(0)1 489 3961-0

F. +43(0)1 489 3961-7

mail@szabo-scandic.com

www.szabo-scandic.com

[linkedin.com/company/szaboscandic](https://www.linkedin.com/company/szaboscandic) 

Monoclonal Antibody SD17-103



Catalog Number: SD-2 (Ascites), SD-2F (FITC labeled)

Volumes available: 0.5 ml, 1.0 ml

Lot: 1403113

Isotype: IgG1, kappa

Specificity: Porcine Epidemic Diarrhea Virus N protein

Applications: ELISA (EIA), Immunohistochemistry (IHC), Immunofluorescence (IFA), Western Blot (WB)

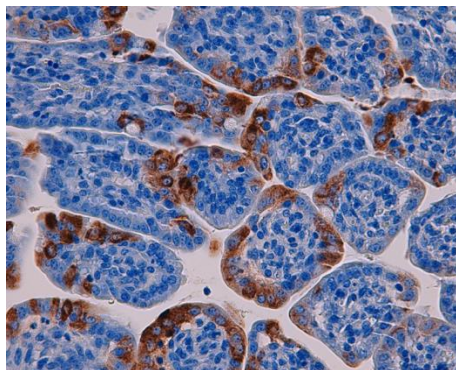
Recommended Dilutions: User should titrate for their own applications. Recommended starting dilution is 1:1000 for IHC and indirect IFA, 1:100 for direct FA (FITC labeled product) and 1:500 for WB.

Immunogen: Mice were immunized with full-length recombinant N-protein from a PEDV US isolate produced in *E. coli*.

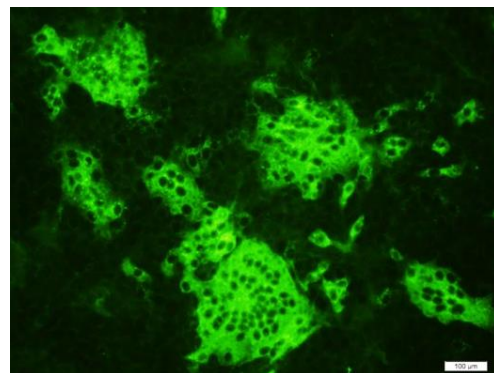
Format: Ascites fluid, FITC-labeled monoclonal antibody

Storage: Aliquot and store at -20C for up to one year after receipt. Store working solutions at 4C for up to 1 month.

Description: Porcine Epidemic Diarrhea Virus (PEDV) is a highly contagious coronavirus of swine, causing diarrhea, vomiting, and severe dehydration in suckling pigs. It has reported mortality rates of up to 100 percent. Monoclonal antibodies to the viral N-protein are detectable by 7-14 days post-exposure and can be used to detect PEDV in fluid and tissue samples.



**Immunohistochemistry of
PEDV-infected cells**



**Immunofluorescence of
PEDV-infected cells**

1006 32nd Avenue, Suite 104, Brookings, SD 57006

Tel: 605-692-1268

www.medgenelabs.com