



SZABO SCANDIC

Part of Europa Biosite

Produktinformation



Forschungsprodukte & Biochemikalien



Zellkultur & Verbrauchsmaterial



Diagnostik & molekulare Diagnostik



Laborgeräte & Service

Weitere Information auf den folgenden Seiten!
See the following pages for more information!



Lieferung & Zahlungsart

siehe unsere [Liefer- und Versandbedingungen](#)

Zuschläge

- Mindermengenzuschlag
- Trockeneiszuschlag
- Gefahrgutzuschlag
- Expressversand

SZABO-SCANDIC HandelsgmbH

Quellenstraße 110, A-1100 Wien

T. +43(0)1 489 3961-0

F. +43(0)1 489 3961-7

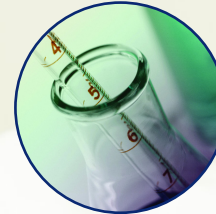
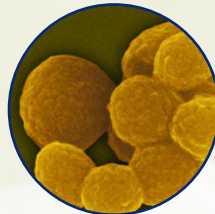
mail@szabo-scandic.com

www.szabo-scandic.com

[linkedin.com/company/szaboscandic](https://www.linkedin.com/company/szaboscandic) 



ImmunoCard[®] MYCOPLASMA



The only rapid test that detects IgM antibody exclusively – for diagnosis of early/acute illness rather than convalescent disease.

“ The Meridian ImmunoCard is the test of choice, especially for children, if only acute phase sera are available for testing. ¹ ”

“ Immunocard Mycoplasma IgM assay is a valid and simple procedure which can reduce technologist time and turnaround time for labs analyzing small numbers of specimens. ² ”

- Four simple steps to process
- No calculations necessary
- Rapid results in 9 minutes
- Sensitivity: 88% Specificity: 90%³



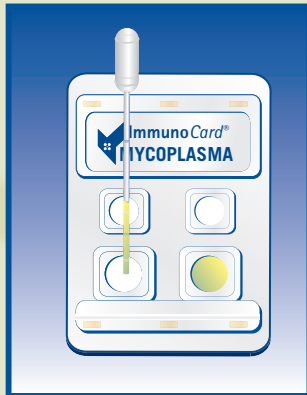
Meridian
Bioscience, Inc.
Inspired Science. Trusted Solutions.™

¹Talkington, D, Thaker, WL. *Analysis of Complement Fixation and Commercial Enzyme Immunoassays for Detection of Antibodies to Mycoplasma pneumoniae in Human Serum.* Clinical and Diagnostic Laboratory Immunology, Sept 2000; 778-780.

²Alexander, et al. "Performance of Meridian ImmunoCard[®] Mycoplasma Test in a Multicenter Clinical Trial." *Journal of Clinical Microbiology*, May 1996; 1180-1183.

³ImmunoCard[®] Mycoplasma Package Insert.

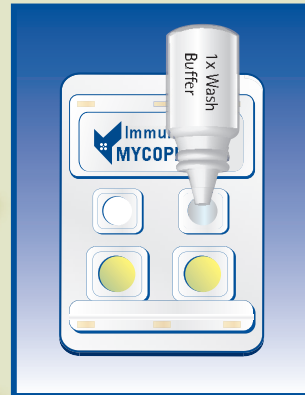
Test Procedure



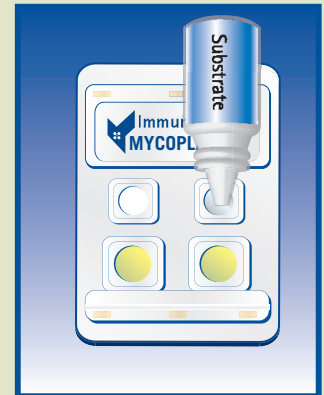
1. Add 2 drops of serum to both lower ports. Incubate for 2 minutes at 22-25C.



2. Add 3 drops of Conjugate to both lower ports. Incubate for 2 minutes at 22-25C.

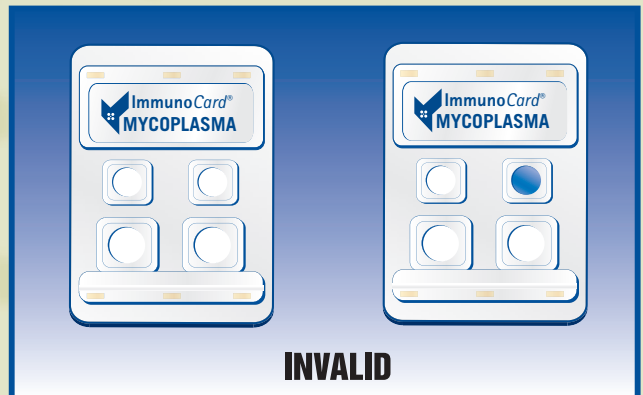
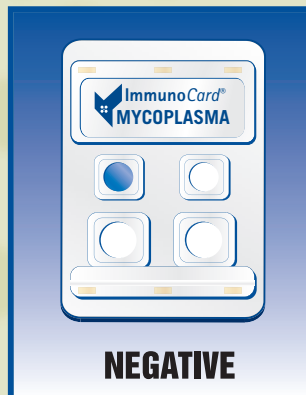
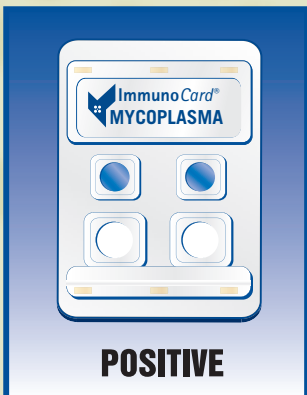


3. Add 3 drops of Wash Buffer to both upper ports.



4. Add 2 drops of Substrate to both upper ports. Incubate for 5 minutes at 22-25C. Interpret visually.

Interpretation of Results



**This chart does not contain complete instructions for use. For further information, please refer to the package insert.*

Ordering Information

ImmunoCard® Mycoplasma

Test Size
30 Tests

Catalog #
709030

Other Meridian Products

ImmunoCard STAT!® Rotavirus

Test Size
30 Tests

Catalog #
750030

ImmunoCard STAT!® Strep A

30 Tests

750230

ImmunoCard STAT!® Mono

30 Tests

750330



USA/Corporate Office:
3471 River Hills Drive
Cincinnati, Ohio 45244
Telephone: 513.271.3700
Orders/Customer Service: 1.800.543.1980
Technical Support: 1.800.343.3858
Information Fax: 513.272.5432
Ordering Fax: 513.271.0124
www.meridianbioscience.com



Belgium / France / Italy / The Netherlands