



SZABO SCANDIC

Part of Europa Biosite

Produktinformation



Forschungsprodukte & Biochemikalien



Zellkultur & Verbrauchsmaterial



Diagnostik & molekulare Diagnostik



Laborgeräte & Service

Weitere Information auf den folgenden Seiten!
See the following pages for more information!



Lieferung & Zahlungsart

siehe unsere [Liefer- und Versandbedingungen](#)

Zuschläge

- Mindermengenzuschlag
- Trockeneiszuschlag
- Gefahrgutzuschlag
- Expressversand

SZABO-SCANDIC HandelsgmbH

Quellenstraße 110, A-1100 Wien

T. +43(0)1 489 3961-0

F. +43(0)1 489 3961-7

mail@szabo-scandic.com

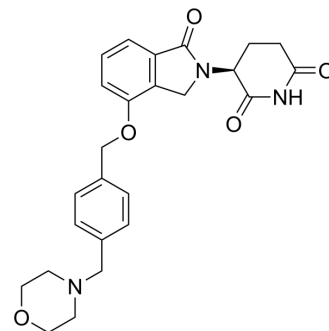
www.szabo-scandic.com

[linkedin.com/company/szaboscandic](https://www.linkedin.com/company/szaboscandic)



Iberdomide

| | | | |
|--------------------|---|-------|---------|
| Cat. No.: | HY-101291 | | |
| CAS No.: | 1323403-33-3 | | |
| Molecular Formula: | C ₂₅ H ₂₇ N ₃ O ₅ | | |
| Molecular Weight: | 449.5 | | |
| Storage: | Powder | -20°C | 3 years |
| | | 4°C | 2 years |
| | In solvent | -80°C | 2 years |
| | | -20°C | 1 year |



SOLVENT & SOLUBILITY

| | | | | | | |
|---|---|---|------|-----------|------------|------------|
| In Vitro | DMSO : 125 mg/mL (278.09 mM; Need ultrasonic) | | | | | |
| | Preparing Stock Solutions | <div><div>Solvent</div><div>Concentration</div></div> | Mass | 1 mg | 5 mg | 10 mg |
| | | 1 mM | | 2.2247 mL | 11.1235 mL | 22.2469 mL |
| | | 5 mM | | 0.4449 mL | 2.2247 mL | 4.4494 mL |
| | | 10 mM | | 0.2225 mL | 1.1123 mL | 2.2247 mL |
| Please refer to the solubility information to select the appropriate solvent. | | | | | | |
| In Vivo | 1. Add each solvent one by one: 10% DMSO >> 40% PEG300 >> 5% Tween-80 >> 45% saline Solubility: ≥ 2.08 mg/mL (4.63 mM); Clear solution | | | | | |
| | 2. Add each solvent one by one: 10% DMSO >> 90% (20% SBE-β-CD in saline) Solubility: ≥ 2.08 mg/mL (4.63 mM); Clear solution | | | | | |
| | 3. Add each solvent one by one: 10% DMSO >> 90% corn oil Solubility: ≥ 2.08 mg/mL (4.63 mM); Clear solution | | | | | |

BIOLOGICAL ACTIVITY

| | |
|-------------|--|
| Description | Iberdomide (CC-220) is an orally active and potent cereblon (CRBN) E3 ligase modulator (CElMoD) with an IC ₅₀ of ~150 nM for cereblon-binding affinity. Iberdomide, a derivative of Thalidomide (HY-14658), has antitumor and immunostimulatory activities ^{[1][2]} . |
| In Vitro | <p>Iberdomide (CC-220; 0.01, 0.1, 1, 10 μM; 72-96 hrs) has antiproliferative effects in a panel of multiple myeloma (MM) cell lines (EJM, H929, KMS11, KMS128M, KMS12PE, MM1.S, MM1.R, RPM-8226, U266 cells) across a range of concentrations^[1].</p> <p>Iberdomide (0.1 μM; 96 hrs) induces apoptosis in all MM cell lines^[1].</p> <p>Iberdomide (0.1 μM; 24, 48, 72 hrs) results in time-dependent increases in G0/G1 and sub-G1 cell cycle fractions on H929 cells^[1].</p> |

| | |
|---------|--|
| | <p>Iberdomide leads to rapid Aiolos depletion in the KMS12BM line^[1].</p> <p>Iberdomide (0.1 μM) displays some anti-proliferative activity in two of the Pomalidomide-resistant (PR) lines with cereblon mutations (EJM/PR and H929/PR) along with decreased levels of cereblon protein^[1].</p> <p>Iberdomide (0.1-1000 nM; 72 hrs) equally induces PBMC-mediated killing of both parental MM1.S cells and MM1.S/PR cells^[1].</p> <p>MCE has not independently confirmed the accuracy of these methods. They are for reference only.</p> |
| In Vivo | <p>Iberdomide (CC-220; 10 mg/kg; oral gavage) after 6 or 24 hours causes higher hCRBN expression in hC343 splenocytes correlated to deeper IKZF1/3 downregulation in WT (C57BL/6), hC123, or-343, (representing two different transgenic founder lines expressing hCRBN) and mCrbn^{-/-} mice^[2].</p> <p>MCE has not independently confirmed the accuracy of these methods. They are for reference only.</p> |

PROTOCOL

Kinase Assay ^[1]

Iberdomide is dissolved in DMSO. In the assay, 60 nM 6Xhis-tagged CRBN-DDB1 is combined with 30 nM cy5-conjugated cereblon modulator and 3 nM LanthaScreen Eu-anti-His Tag antibody in 20 mM HEPES pH 7, 150 mM NaCl, 0.005% Tween-20 assay buffer. FRET is observed by exciting at 340 nm and monitoring emission at 615 nm and 665 nm, and FRET efficiency is determined by the ratio of FRET to non-FRET emission. Competing cereblon modulating compound (Iberdomide) or DMSO carrier is titrated and incubated for 10 min before scanning^[1].

MCE has not independently confirmed the accuracy of these methods. They are for reference only.

CUSTOMER VALIDATION

- Cell Host Microbe. 2020 Mar.
- Nat Cancer. 2022 May;3(5):595-613.
- Nat Commun. 2022 Sep 10;13(1):5324.
- Cell Rep Med. 2024 Mar 19;5(3):101472.
- Blood Cancer J. 2019 Feb 11;9(2):19.

See more customer validations on www.MedChemExpress.com

Caution: Product has not been fully validated for medical applications. For research use only.

Tel: 609-228-6898

Fax: 609-228-5909

E-mail: tech@MedChemExpress.com

Address: 1 Deer Park Dr, Suite Q, Monmouth Junction, NJ 08852, USA