



# SZABO SCANDIC

Part of Europa Biosite

## Produktinformation



Forschungsprodukte & Biochemikalien



Zellkultur & Verbrauchsmaterial



Diagnostik & molekulare Diagnostik



Laborgeräte & Service

Weitere Information auf den folgenden Seiten!  
See the following pages for more information!



### Lieferung & Zahlungsart

siehe unsere [Liefer- und Versandbedingungen](#)

### Zuschläge

- Mindermengenzuschlag
- Trockeneiszuschlag
- Gefahrgutzuschlag
- Expressversand

### SZABO-SCANDIC Handels GmbH

Quellenstraße 110, A-1100 Wien

T. +43(0)1 489 3961-0

F. +43(0)1 489 3961-7

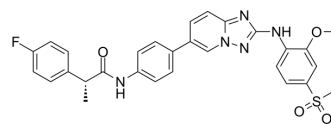
[mail@szabo-scandic.com](mailto:mail@szabo-scandic.com)

[www.szabo-scandic.com](http://www.szabo-scandic.com)

[linkedin.com/company/szaboscandic](https://www.linkedin.com/company/szaboscandic) 

## Empesertib

Cat. No.:	HY-12858
CAS No.:	1443763-60-7
Molecular Formula:	C <sub>29</sub> H <sub>26</sub> FN <sub>5</sub> O <sub>4</sub> S
Molecular Weight:	560
Target:	Mps1
Pathway:	Cell Cycle/DNA Damage; Cytoskeleton
Storage:	Powder    -20°C    3 years 4°C    2 years In solvent   -80°C    2 years -20°C    1 year



### SOLVENT & SOLUBILITY

#### In Vitro

DMSO : ≥ 35 mg/mL (62.50 mM)  
 \* "≥" means soluble, but saturation unknown.

	Solvent Concentration	Mass	1 mg	5 mg	10 mg
Preparing Stock Solutions	1 mM		1.7857 mL	8.9286 mL	17.8571 mL
	5 mM		0.3571 mL	1.7857 mL	3.5714 mL
	10 mM		0.1786 mL	0.8929 mL	1.7857 mL

Please refer to the solubility information to select the appropriate solvent.

#### In Vivo

- Add each solvent one by one: 10% DMSO >> 40% PEG300 >> 5% Tween-80 >> 45% saline  
Solubility: ≥ 2.5 mg/mL (4.46 mM); Clear solution
- Add each solvent one by one: 10% DMSO >> 90% (20% SBE-β-CD in saline)  
Solubility: 2.5 mg/mL (4.46 mM); Suspended solution; Need ultrasonic
- Add each solvent one by one: 10% DMSO >> 90% corn oil  
Solubility: ≥ 2.5 mg/mL (4.46 mM); Clear solution

### BIOLOGICAL ACTIVITY

Description	Empesertib (BAY 1161909) is a potent Mps1 inhibitor, with an IC <sub>50</sub> of < 1 nM.
IC <sub>50</sub> & Target	Mps1 1 nM (IC <sub>50</sub> )
In Vitro	BAY 1161909 is a potent Mps1 inhibitor, with an IC <sub>50</sub> of < 1 nM. BAY 1161909 also shows anti-tumor effect, suppressing the

proliferation of HeLa cells, with an  $IC_{50}$  of  $< 400 \text{ nM}$ <sup>[1]</sup>.

MCE has not independently confirmed the accuracy of these methods. They are for reference only.

## PROTOCOL

### Kinase Assay <sup>[1]</sup>

N-terminally GST-tagged human full length recombinant Mps-1 kinase is used. As substrate for the kinase reaction a biotinylated peptide of the amino-acid sequence PWDPDDADITEILG is used. For the assay 50 nL of a 100-fold concentrated solution of the test compounds (BAY 1161909, etc.) in DMSO is pipetted into a black low volume 384 well microtiter plate, 2  $\mu\text{L}$  of a solution of Mps-1 in assay buffer [0.1 mM sodium-ortho-vanadate, 10 mM  $\text{MgCl}_2$ , 2 mM DTT, 25 mM Hepes pH 7.7, 0.05% BSA, 0.001 % Pluronic F-127] are added and the mixture is incubated for 15 min at 22°C to allow pre-binding of the test compounds to Mps-1 before the start of the kinase reaction. Then the kinase reaction is started by the addition of 3  $\mu\text{L}$  of a solution of 16.7 adenosine-tri-phosphate and peptide substrate in assay buffer and the resulting mixture is incubated for a reaction time of 60 min at 22°C. The concentration of Mps-1 in the assay is adjusted to the activity of the enzyme lot and is chosen appropriate to have the assay in the linear range, typical enzyme concentrations are in the range of about 1 nM (final conc, in the 5  $\mu\text{L}$  assay volume). The reaction is stopped by the addition of 3  $\mu\text{L}$  of a solution of HTRF detection reagents (100 mM Hepes pH 7.4, 0.1 % BSA, 40 mM EDTA, 140 nM Streptavidin-XLent, 1.5 nM anti-phospho(Ser/Thr)-Europium-antibody<sup>[1]</sup>. MCE has not independently confirmed the accuracy of these methods. They are for reference only.

### Cell Assay <sup>[1]</sup>

Cultivated tumor cells are plated at a density of 5000 cells/ well (MCF7, DU145, HeLa-MaTu-ADR), 3000 cells/well (NCI-H460, HeLa-MaTu, HeLa), or 1000 cells/well (B16F10) in a 96-well multititer plate in 200  $\mu\text{L}$  of their respective growth medium supplemented 10% fetal calf serum. After 24 hours, the cells of one plate (zero-point plate) are stained with crystal violet, while the medium of the other plates is replaced by fresh culture medium (200  $\mu\text{L}$ ), to which the test substances (BAY 1161909, etc.) are added in various concentrations (0  $\mu\text{M}$ , as well as in the range of 0.01-30  $\mu\text{M}$ ; the final concentration of the solvent DMSO is 0.5%). The cells are incubated for 4 days in the presence of test substances. Cell proliferation is determined by staining the cells with crystal violet: the cells are fixed by adding 20  $\mu\text{L}$ /measuring point of an 11% glutaric aldehyde solution for 15 minutes at room temperature. After three washing cycles of the fixed cells with water, the plates are dried at room temperature. The cells are stained by adding 100  $\mu\text{L}$ /measuring point of a 0.1% crystal violet solution (pH 3.0). After three washing cycles of the stained cells with water, the plates are dried at room temperature. The dye is dissolved by adding 100  $\mu\text{L}$ /measuring point of a 10% acetic acid solution. The  $IC_{50}$  values are determined by means of a 4 parameter fit. The compounds A1 (BAY 1161909), A2, A3, A4 and A5 are characterized by an  $IC_{50}$  determined in a HeLa-MaTu-ADR cell proliferation assay<sup>[1]</sup>.

MCE has not independently confirmed the accuracy of these methods. They are for reference only.

## CUSTOMER VALIDATION

- Cell Rep. 2019 Apr 9;27(2):631-647.e5.

See more customer validations on [www.MedChemExpress.com](http://www.MedChemExpress.com)

## REFERENCES

[1]. SCHULZE, Volker, et al. PRODRUG DERIVATIVES OF SUBSTITUTED TRIAZOLOPYRIDINES. WO2014198647A2

**Caution: Product has not been fully validated for medical applications. For research use only.**

Tel: 609-228-6898

Fax: 609-228-5909

E-mail: [tech@MedChemExpress.com](mailto:tech@MedChemExpress.com)

Address: 1 Deer Park Dr, Suite Q, Monmouth Junction, NJ 08852, USA