



# SZABO SCANDIC

Part of Europa Biosite

## Produktinformation



Forschungsprodukte & Biochemikalien



Zellkultur & Verbrauchsmaterial



Diagnostik & molekulare Diagnostik



Laborgeräte & Service

Weitere Information auf den folgenden Seiten!  
See the following pages for more information!



### Lieferung & Zahlungsart

siehe unsere [Liefer- und Versandbedingungen](#)

### Zuschläge

- Mindermengenzuschlag
- Trockeneiszuschlag
- Gefahrgutzuschlag
- Expressversand

### SZABO-SCANDIC Handels GmbH

Quellenstraße 110, A-1100 Wien

T. +43(0)1 489 3961-0

F. +43(0)1 489 3961-7

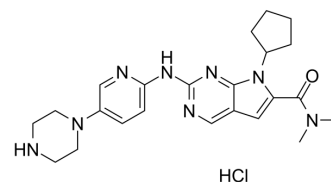
[mail@szabo-scandic.com](mailto:mail@szabo-scandic.com)

[www.szabo-scandic.com](http://www.szabo-scandic.com)

[linkedin.com/company/szaboscandic](https://www.linkedin.com/company/szaboscandic) 

## Ribociclib hydrochloride

Cat. No.:	HY-15777A
CAS No.:	1211443-80-9
Molecular Formula:	C <sub>23</sub> H <sub>31</sub> ClN <sub>8</sub> O
Molecular Weight:	471
Target:	CDK
Pathway:	Cell Cycle/DNA Damage
Storage:	4°C, sealed storage, away from moisture
	* In solvent : -80°C, 6 months; -20°C, 1 month (sealed storage, away from moisture)



### SOLVENT & SOLUBILITY

In Vitro	H <sub>2</sub> O : 10 mg/mL (21.23 mM; Need ultrasonic) DMSO : 7.69 mg/mL (16.33 mM; Need ultrasonic)				
	Preparing Stock Solutions	<div>Mass Solvent Concentration</div>	1 mg	5 mg	10 mg
		1 mM	2.1231 mL	10.6157 mL	21.2314 mL
		5 mM	0.4246 mL	2.1231 mL	4.2463 mL
		10 mM	0.2123 mL	1.0616 mL	2.1231 mL
Please refer to the solubility information to select the appropriate solvent.					
In Vivo	1. Add each solvent one by one: PBS Solubility: 1 mg/mL (2.12 mM); Clear solution; Need ultrasonic and warming and heat to 60°C				
	2. Add each solvent one by one: 10% DMSO >> 40% PEG300 >> 5% Tween-80 >> 45% saline Solubility: ≥ 0.77 mg/mL (1.63 mM); Clear solution				
	3. Add each solvent one by one: 10% DMSO >> 90% (20% SBE-β-CD in saline) Solubility: ≥ 0.77 mg/mL (1.63 mM); Clear solution				

### BIOLOGICAL ACTIVITY

Description	Ribociclib hydrochloride (LEE011 hydrochloride) is a highly specific CDK4/6 inhibitor with IC <sub>50</sub> values of 10 nM and 39 nM, respectively, and is over 1,000-fold less potent against the cyclin B/CDK1 complex.	
IC <sub>50</sub> & Target	CDK4 10 nM (IC <sub>50</sub> )	CDK6 39 nM (IC <sub>50</sub> )
In Vitro	Treating a panel of 17 neuroblastoma cell lines with Ribociclib (LEE011) across a four-log dose range (10 to 10,000 nM). Treatment with Ribociclib significantly inhibits substrate adherent growth relative to the control in 12 of the 17	

neuroblastoma cell lines examined (mean  $IC_{50}$ =306±68 nM, considering sensitive lines only, where sensitivity is defined as an  $IC_{50}$  of less than 1  $\mu$ M. Ribociclib treatment of two neuroblastoma cell lines (BE2C and IMR5) with demonstrated sensitivity to CDK4/6 inhibition results in a dose-dependent accumulation of cells in the  $G_0/G_1$  phase of the cell cycle. This  $G_0/G_1$  arrest becomes significant at Ribociclib concentrations of 100 nM ( $p=0.007$ ) and 250 nM ( $p=0.01$ ), respectively<sup>[2]</sup>. MCE has not independently confirmed the accuracy of these methods. They are for reference only.

#### In Vivo

CB17 immunodeficient mice bearing BE2C, NB-1643 (MYCN amplified, sensitive in vitro), or EBC1 (non-amplified, resistant in vitro) xenografts are treated once daily for 21 days with Ribociclib (LEE011; 200 mg/kg) or with a vehicle control. This dosing strategy is well tolerated, as no weight loss or other signs of toxicity are observed in any of the xenograft models. Tumor growth is significantly delayed throughout the 21 days of treatment in mice harboring the BE2C or 1643 xenografts (both,  $p<0.0001$ ), although growth resumed post-treatment<sup>[2]</sup>. MCE has not independently confirmed the accuracy of these methods. They are for reference only.

## PROTOCOL

#### Cell Assay <sup>[2]</sup>

Cells are grown for 24 hours in 35 mm plates, treated with 500 nM Ribociclib for 6 days, and then fixed and stained overnight. Cells are then imaged for SA- $\beta$ -gal using an Axio Observer D.1 phase contrast microscope. The percentage of SA- $\beta$ -gal positive cells is determined by counting the number of positive cells present in three separate microscope frames, and then normalizing to the control. To assess apoptotic activity, cells are plated in triplicate in 96 well plates, treated with Ribociclib, and assayed for caspase 3/7 activation 16 hours after treatment with Caspase-Glo 3/7. Cells treated with SN-38 are used as a positive control<sup>[2]</sup>.

MCE has not independently confirmed the accuracy of these methods. They are for reference only.

#### Animal Administration <sup>[2]</sup>

Mice<sup>[2]</sup>

The BE2C, NB-1643, or EBC1 cell line-derived xenografts are implanted subcutaneously into the right flank of CB17 SCID<sup>-/-</sup> mice. Animals bearing engrafted tumors of 200-600 mm<sup>3</sup> are then randomized to oral treatment with 200 mg/kg Ribociclib in 0.5 % methylcellulose ( $n=10$ ) or vehicle ( $n=10$ ) daily for a total of 21 days. Tumor burden is determined periodically throughout treatment according to the formula  $(\pi/6) \times d^2$ , where  $d$  represents the mean tumor diameter obtained by caliper measurement.

MCE has not independently confirmed the accuracy of these methods. They are for reference only.

## CUSTOMER VALIDATION

- Cell. 2023 Jun 8;186(12):2628-2643.e21.
- Nature Cancer. 2021 Apr;2(4):429-443.
- Mil Med Res. 2022 Dec 19;9(1):71.
- Sci Transl Med. 2018 Jul 18;10(450):eaaq1093.
- Nat Commun. 2022 Aug 10;13(1):4689.

See more customer validations on [www.MedChemExpress.com](http://www.MedChemExpress.com)

## REFERENCES

- [1]. VanArsdale T, et al. Molecular Pathways: Targeting the Cyclin D-CDK4/6 Axis for Cancer Treatment. Clin Cancer Res. 2015 Jul 1;21(13):2905-10.
- [2]. Rader J, et al. Dual CDK4/CDK6 Inhibition Induces Cell-Cycle Arrest and Senescence in Neuroblastoma. Clin Cancer Res. 2013 Nov 15;19(22):6173-82.

---

**Caution: Product has not been fully validated for medical applications. For research use only.**

Tel: 609-228-6898

Fax: 609-228-5909

E-mail: [tech@MedChemExpress.com](mailto:tech@MedChemExpress.com)

Address: 1 Deer Park Dr, Suite Q, Monmouth Junction, NJ 08852, USA