



# SZABO SCANDIC

Part of Europa Biosite

## Produktinformation



Forschungsprodukte & Biochemikalien



Zellkultur & Verbrauchsmaterial



Diagnostik & molekulare Diagnostik



Laborgeräte & Service

Weitere Information auf den folgenden Seiten!  
See the following pages for more information!



### Lieferung & Zahlungsart

siehe unsere [Liefer- und Versandbedingungen](#)

### Zuschläge

- Mindermengenzuschlag
- Trockeneiszuschlag
- Gefahrgutzuschlag
- Expressversand

### SZABO-SCANDIC HandelsgmbH

Quellenstraße 110, A-1100 Wien

T. +43(0)1 489 3961-0

F. +43(0)1 489 3961-7

[mail@szabo-scandic.com](mailto:mail@szabo-scandic.com)

[www.szabo-scandic.com](http://www.szabo-scandic.com)

[linkedin.com/company/szaboscandic](https://www.linkedin.com/company/szaboscandic) 



## Mouse anti PSA

Catalogue number: **MUB2021P**

Clone	3E6
Isotype	IgG1
Product Type	Primary Antibodies
Units	0.1 mg
Host	Mouse (Balb/c)
Species reactivity	Human
Application	ELISA Flow cytometry Immunoblotting Immunocytochemistry Immunohistochemistry (frozen) Immunohistochemistry (paraffin)

## Distributors

For Purchasing Information, please contact your local distributor

[Find Distributor](#)

### Background

Prostate-specific antigen (PSA), also known as gamma-seminoprotein or kallikrein-3 (KLK3), is a 33 kDa glycoprotein encoded in Humans by the KLK3 gene. PSA is a member of the kallikrein-related peptidase family and is secreted by the epithelial cells of the prostate gland. PSA is present in small quantities in the Serum of men with healthy prostates, but is often elevated in the presence of prostate cancer or other prostate disorders.

### Source

3E6 is a Mouse monoclonal IgG1/k antibody derived by fusion of SP2/0-Ag14 Mouse myeloma cells with spleen cells from a Mouse immunized with Human PSA.

### Product

Each vial contains 100 ul 1 mg/ml purified monoclonal antibody in PBS containing 0.09% sodium azide.

### Applications

3E6 is suitable for immunocytochemistry, immuno-histochemistry on frozen and paraffin-embedded tissues, ELISA, Western blotting and flow cytometry. Optimal antibody

Figure 1

Immunohistochemistry on paraffin section of human prostate 1

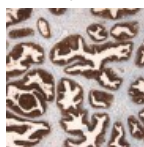
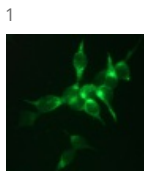


Figure 2

Immunofluorescent staining of LNCaP cells



dilution should be determined by titration.

**Storage**

Store at 4°C, or in small aliquots at -20°C.

**Caution**

This product is intended FOR RESEARCH USE ONLY, and FOR TESTS IN VITRO, not for use in diagnostic or therapeutic procedures involving humans or animals. This product contains sodium azide. To prevent formation of toxic vapors, do not mix with strong acidic solutions. To prevent formation of potentially explosive metallic azides in metal plumbing, always wash into drain with copious quantities of water. This datasheet is as accurate as reasonably achievable, but Nordic-MUbio accepts no liability for any inaccuracies or omissions in this information.