



SZABO SCANDIC

Part of Europa Biosite

Produktinformation



Forschungsprodukte & Biochemikalien



Zellkultur & Verbrauchsmaterial



Diagnostik & molekulare Diagnostik



Laborgeräte & Service

Weitere Information auf den folgenden Seiten!
See the following pages for more information!



Lieferung & Zahlungsart

siehe unsere [Liefer- und Versandbedingungen](#)

Zuschläge

- Mindermengenzuschlag
- Trockeneiszuschlag
- Gefahrgutzuschlag
- Expressversand

SZABO-SCANDIC Handels GmbH

Quellenstraße 110, A-1100 Wien

T. +43(0)1 489 3961-0

F. +43(0)1 489 3961-7

mail@szabo-scandic.com

www.szabo-scandic.com

[linkedin.com/company/szaboscandic](https://www.linkedin.com/company/szaboscandic) 



Mouse Anti Human CD4

Catalogue number: **MUB3002P1**

Clone	Edu-2
Isotype	IgG2a
Product Type	Primary Antibodies
Units	100 ug/ml
Host	Mouse
Species reactivity	Human
Application	Flow cytometry Immunocytochemistry Immunohistochemistry (frozen) Immunohistochemistry (paraffin)

Distributors

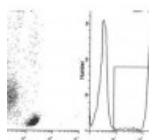
For Purchasing Information,
please contact your local
distributor

[Find Distributor](#)

Background

CD4 (Cluster of Differentiation 4) is a glycoprotein expressed on the surface of T helper cells, monocytes, macrophages, and dendritic cells. It was discovered in the late 1970s and was originally known as leu-3 and T4 (after the OKT4 monoclonal antibody that reacted with it) before being named CD4 in 1984. In humans, the CD4 protein is encoded by the CD4 gene. CD4 plays a role in the recognition of foreign antigens presented to T cells by MHC class II molecules. Furthermore, this antigen acts as a receptor for HIV-1 by binding the viral protein gp120. The CD4 antigen is present on most thymocytes and a subpopulation of peripheral blood T cells, called T helper cells (Th). In addition, CD4 is expressed on monocytes and weak on macrophages.

1_MUB3002



Source

Edu-2 is a mouse monoclonal IgG2a antibody raised against CD4.

Product

Each vial contains 1 ml of 100µg/ml purified monoclonal antibody in 0.01 M sodium phosphate, 0.15 M NaCl, 0.2% BSA, 0.09% sodium azide; pH 7.3.

Applications

Flow cytometry and immunohistochemistry using frozen and paraffin embedded tissue sections.

Optimal antibody dilution should be determined by titration. CD4 (Edu-2) is used in routine blood testing for CD4+ cells and CD4/CD8 ratios (e.g. HIV/AIDS patients) or as part of panels for the detection and differentiation of certain T cell leukemias. All these reagents are effectively formulated for indirect immunofluorescent staining of human blood for flow cytometric analysis using 10 µl/106 leukocytes. Staining with clone Edu-2 (CD4) monoclonal antibodies by flow cytometry analysis of normal blood cells is illustrated. Indirect staining was performed using 10 µl of the purified monoclonal antibody with RaM FITC conjugate and 100 µl blood sample. However each investigator should titer the antibody in their application to determine the optimal per-test amount. CD4 is also used in studies of functional activity of Th-cells in bacterial and viral infections, development of auto-immune diseases, transplant rejection, immune protection in response to allergens or allergenic reactivity.

Specificity

CD4 (Edu-2) recognizes the CD4 antigen (a 55 kD glycoprotein).

Storage

Store at 4°C, or in small aliquots for prolonged storage at -20°C.

References

1. Carrière, D., et al., 1995, In: Leukocyte Typing V: 475-476.
2. Piatier-Tonneau, D., et al., 1995, In: Leukocyte Typing V: 476-478.
3. Kaneoka, H. et al., 1983. J. Immunol., 131: 158
4. Lanier, L.L., et al., 1986. J. Immunol., 137: 2501
5. Knowles, R.W., 1986. In: Leukocyte Typing II : 259-288;
6. E.L. Reinher, B.F. Haynes, L.M. Nadler/ and I.D. Bernstein, eds. Springer-Verlag, New York
7. Friedrich, W., 1982. Blood, 59: 696
8. Allison, J.P. and Lanier, L.L., 1987. Ann. Rev. Immunol., 5: 503

Caution

This product is intended FOR RESEARCH USE ONLY, and FOR TESTS IN VITRO, not for use in diagnostic or therapeutic procedures involving humans or animals. This product contains sodium azide. To prevent formation of toxic vapors, do not mix with strong acidic solutions. To prevent formation of potentially explosive metallic azides in metal plumbing, always wash into drain with copious quantities of water. This datasheet is as accurate as reasonably achievable, but Nordic-MUBio accepts no liability for any inaccuracies or omissions in this information.



[Home](#) | [Company Profile](#) | [Catalogue](#) | [Distributors](#) | [Contact](#) |

Content: Nordic-MUbio BV - Copyright © 2015