



SZABO SCANDIC

Part of Europa Biosite

Produktinformation



Forschungsprodukte & Biochemikalien



Zellkultur & Verbrauchsmaterial



Diagnostik & molekulare Diagnostik



Laborgeräte & Service

Weitere Information auf den folgenden Seiten!
See the following pages for more information!



Lieferung & Zahlungsart

siehe unsere [Liefer- und Versandbedingungen](#)

Zuschläge

- Mindermengenzuschlag
- Trockeneiszuschlag
- Gefahrgutzuschlag
- Expressversand

SZABO-SCANDIC HandelsgmbH

Quellenstraße 110, A-1100 Wien

T. +43(0)1 489 3961-0

F. +43(0)1 489 3961-7

mail@szabo-scandic.com

www.szabo-scandic.com

[linkedin.com/company/szaboscandic](https://www.linkedin.com/company/szaboscandic) 

Datasheet for 001-0103**Bovine IgG Fc****Overview**

Description:	Bovine IgG Fc Fragment - 001-0103
Item No.:	001-0103
Size:	1 mg
Applications:	Dot Blot, SDS-PAGE
Origin:	Bovine

Product Details

Background:	Bovine IgG F(c) Fragment Agarose Conjugated product is made from IgG, secreted as part of the adaptive immune response by plasma B cells, immunoglobulin G constitutes 75% of serum immunoglobulins. This product possesses the F(c) region, recognized by high-affinity Fc receptor proteins followed by agarose conjugation.
Synonyms:	Bovine IgG F(c) Agarose Conjugate, Bovine IgG Fc Agarose, Bovine Fc fragment Agarose conjugate
Species of Origin:	Bovine
Format:	IgG Fc
Type:	Native Protein

Target Details

Purity/Specificity:	This product was prepared from normal serum by a multi-step process which includes delipidation, salt fractionation, ion exchange chromatography and papain digestion followed by chromatographic separation and extensive dialysis against the buffer stated above. Assay by immunoelectrophoresis resulted in a single precipitin arc against anti-Bovine Serum, anti-Bovine IgG and anti-Bovine IgG F(c). No reaction was observed against anti-Bovine IgG F(ab') ₂ or anti-Papain.
----------------------------	---

Application Details

Tested Applications:	Dot Blot, SDS-PAGE
-----------------------------	--------------------

Application Note: Bovine IgG F(c) has been tested in SDS-Page and Dot Blot and can be utilized as a control or standard reagent in Western Blotting and ELISA experiments.

Assay Dilutions: All assays should be optimized by the user. Recommended dilutions (if any) may be listed below.

Formulation

Physical State: Liquid (sterile filtered)

Concentration: 1.0 mg/mL by UV absorbance at 280 nm

Buffer: 0.02 M Potassium Phosphate, 0.15 M Sodium Chloride, pH 7.2

Preservative: 0.01% (w/v) Sodium Azide

Stabilizer: None

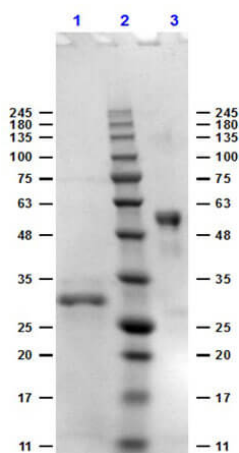
Shipping & Handling

Shipping Condition: Wet Ice

Storage Condition: Store vial at 4° C prior to opening. This product is stable 4° C as an undiluted liquid. Dilute only prior to immediate use. For extended storage mix with an equal volume of glycerol, aliquot contents and freeze at -20° C or below. Avoid cycles of freezing and thawing.

Expiration: Expiration date is one (1) year from date of receipt.

Images

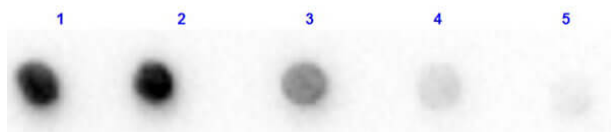


SDS-PAGE

SDS-PAGE for Bovine IgG F(c) Fragment. Lane 1: 1µg Reduced Bovine Fc. Lane 2: MW ladder Opal pre-stained (p/n MB-210-0500). Lane 3: 1µg Non-Reduced Bovine Fc. Coomassie Blue Stained.

Dot Blot

Dot Blot of Bovine IgG F(c) Fragment. Lane 1: 100 ng Bovine Fc. Lanes 2-5: serial dilution 3 fold of Antigen. Primary Antibody: Rabbit Anti-Bovine Fc (p/n 601-4103) at 1 µg/ml at RT for 1 hour. Secondary Antibody: Rabbit Secondary HRP Antibody (p/n 611-103-122) at 1:70,000 for 30 min at RT. Block: MB-070 at RT for 30 minutes.

**Disclaimer**

This product is for research use only and is not intended for therapeutic or diagnostic applications. Please contact a technical service representative for more information. All products of animal origin manufactured by Rockland Immunochemicals are derived from starting materials of North American origin. Collection was performed in United States Department of Agriculture (USDA) inspected facilities and all materials have been inspected and certified to be free of disease and suitable for exportation. All properties listed are typical characteristics and are not specifications. All suggestions and data are offered in good faith but without guarantee as conditions and methods of use of our products are beyond our control. All claims must be made within 30 days following the date of delivery. The prospective user must determine the suitability of our materials before adopting them on a commercial scale. Suggested uses of our products are not recommendations to use our products in violation of any patent or as a license under any patent of Rockland Immunochemicals, Inc. If you require a commercial license to use this material and do not have one, then return this material, unopened to: Rockland Inc., P.O. BOX 5199, Limerick, Pennsylvania, USA.