



SZABO SCANDIC

Part of Europa Biosite

Produktinformation



Forschungsprodukte & Biochemikalien



Zellkultur & Verbrauchsmaterial



Diagnostik & molekulare Diagnostik



Laborgeräte & Service

Weitere Information auf den folgenden Seiten!
See the following pages for more information!



Lieferung & Zahlungsart

siehe unsere [Liefer- und Versandbedingungen](#)

Zuschläge

- Mindermengenzuschlag
- Trockeneiszuschlag
- Gefahrgutzuschlag
- Expressversand

SZABO-SCANDIC HandelsgmbH

Quellenstraße 110, A-1100 Wien

T. +43(0)1 489 3961-0

F. +43(0)1 489 3961-7

mail@szabo-scandic.com

www.szabo-scandic.com

[linkedin.com/company/szaboscandic](https://www.linkedin.com/company/szaboscandic) 

Datasheet for 009-001-V23-0010
rHuman IGF-II Protein**Overview**

Description:	Human Insulin-like Growth Factor II Recombinant Protein - 009-001-V23-0010
Item No.:	009-001-V23-0010
Size:	10 µg
Applications:	SDS-PAGE, Cellular Assay
Origin:	Human
Expressed in:	E. coli

Product Details

Background:	Insulin-like Growth Factor II, IGF-II, is a major growth hormone made by Theca cells during gestation. While IGF-II is known to engage the IGF-I receptor (IGF1R) to mediate embryonic growth, IGF-II is also known to bind the IGF-II receptor (IGF2R). IGF2R is thought to be signaling dead receptor that acts as a sink by binding up free IGF-II. Recombinant human IGF-II is non-glycosylated protein, containing 67 amino acids, with a molecular weight of 7.5 kDa.
Synonyms:	Somatamedin A
Species of Origin:	Human
Expressed in:	E. coli
Type:	Recombinant Protein
Low Endotoxin:	Yes

Target Details

Gene Name:	IGF2
Purity/Specificity:	Insulin-like Growth Factor II purity was determined to be greater than 97% as determined by HPLC, analysis by UV-Spectroscopy at 280nm, and by reducing and non-reducing SDS-pAGE.
Relevant Links:	<ul style="list-style-type: none">• UniProtKB - P01344

Application Details

Tested Applications:	SDS-PAGE
Suggested Applications:	Cellular Assay (Based on references)
Application Note:	Insulin-like Growth Factor II Recombinant Protein has been tested by SDS-PAGE and biological activity and is suitable as a control for polyclonal or monoclonal anti-Insulin-like Growth Factor II in immunological assays.
Assay Dilutions:	All assays should be optimized by the user. Recommended dilutions (if any) may be listed below.
Other:	User Optimized

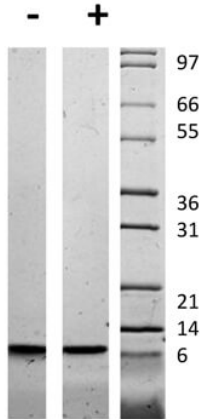
Formulation

Physical State:	Lyophilized
Buffer:	0.1% Trifluoroacetic acid
Preservative:	None
Stabilizer:	None
Reconstitution Volume:	10µl (10-100µl)
Reconstitution Buffer:	Restore with deionized water (or equivalent)

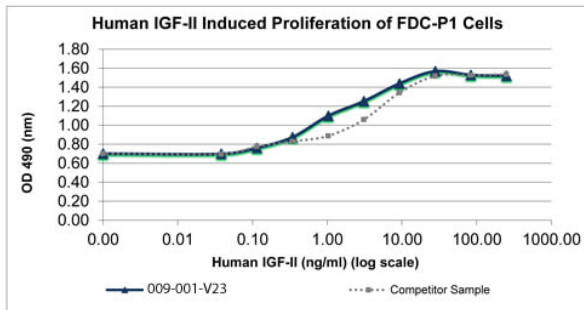
Shipping & Handling

Shipping Condition:	Ambient
Storage Condition:	Store vial at 4° C prior to restoration. Dilute only prior to immediate use. Maintain sterility. This product DOES NOT contain preservative. DO NOT VORTEX. We recommend adding a carrier protein such as HSA or BSA to 0.1% (i.e. 1.0 mg/mL). For best results aliquot contents and freeze at -20° C or colder. Avoid cycles of freezing and thawing. Centrifuge vial before each opening to dislodge contents from the cap and to clarify if contents are not clear after standing at room temperature.
Expiration:	Expiration date is six (6) months from date of receipt.

Images


SDS-PAGE

SDS-PAGE of Human Insulin-like Growth Factor II Recombinant Protein. Lane 1: 1 µg Human IGF-II in non-reducing conditions (-). Lane 2: 1 µg Human IGF-II in reducing conditions (+). Lane 3: Molecular weight marker. Human IGF-II has a predicted MW of 7.5 kDa.


SDS-PAGE

Bioactivity of Human Insulin-like Growth Factor II Recombinant Protein. FDC-P1 cells were cultured with 0 to 250 ng/mL Human IGF-II. Cell proliferation was measured after 48 hours and the linear portion of the curve was used to calculate the ED50. The ED50 of Human IGF-II is 1.1-1.6 ng/mL. This value is comparable to the competitor sample and to the expected range of 1.5-6 ng/mL.

Disclaimer

This product is for research use only and is not intended for therapeutic or diagnostic applications. Please contact a technical service representative for more information. All products of animal origin manufactured by Rockland Immunochemicals are derived from starting materials of North American origin. Collection was performed in United States Department of Agriculture (USDA) inspected facilities and all materials have been inspected and certified to be free of disease and suitable for exportation. All properties listed are typical characteristics and are not specifications. All suggestions and data are offered in good faith but without guarantee as conditions and methods of use of our products are beyond our control. All claims must be made within 30 days following the date of delivery. The prospective user must determine the suitability of our materials before adopting them on a commercial scale. Suggested uses of our products are not recommendations to use our products in violation of any patent or as a license under any patent of Rockland Immunochemicals, Inc. If you require a commercial license to use this material and do not have one, then return this material, unopened to: Rockland Inc., P.O. BOX 5199, Limerick, Pennsylvania, USA.