



# SZABO SCANDIC

Part of Europa Biosite

## Produktinformation



Forschungsprodukte & Biochemikalien



Zellkultur & Verbrauchsmaterial



Diagnostik & molekulare Diagnostik



Laborgeräte & Service

Weitere Information auf den folgenden Seiten!  
See the following pages for more information!



### Lieferung & Zahlungsart

siehe unsere [Liefer- und Versandbedingungen](#)

### Zuschläge

- Mindermengenzuschlag
- Trockeneiszuschlag
- Gefahrgutzuschlag
- Expressversand

### SZABO-SCANDIC HandelsgmbH

Quellenstraße 110, A-1100 Wien

T. +43(0)1 489 3961-0

F. +43(0)1 489 3961-7

[mail@szabo-scandic.com](mailto:mail@szabo-scandic.com)

[www.szabo-scandic.com](http://www.szabo-scandic.com)

[linkedin.com/company/szaboscandic](https://www.linkedin.com/company/szaboscandic) 

**Datasheet for 012-001-301-0100**  
**rRat IL-1 beta Protein****Overview**

<b>Description:</b>	Rat Interleukin-1 beta Recombinant Protein - 012-001-301-0100
<b>Item No.:</b>	012-001-301-0100
<b>Size:</b>	100 µg
<b>Applications:</b>	SDS-PAGE, Cellular Assay
<b>Origin:</b>	Rat
<b>Expressed in:</b>	E. coli

**Product Details**

**Background:** Interleukin-1 beta (IL-1 $\beta$ ) is a pro-inflammatory cytokine, produced in response to inflammatory agents by a variety of cells, including, monocytes, macrophages, and dendritic cells (DCs). IL-1 $\beta$  and IL-1 $\alpha$  are two distinct and independently regulated gene products that comprise IL-1 and signal through the Type 1 IL-1 receptor (IL-1R1). Although IL-1 $\alpha$  is cell associated and IL-1 $\beta$  is secreted, they have nearly identical biological activity in that they induce adhesion molecule expression on epithelial cells, control fever induction, and play a role in arthritis and septic shock. Signaling activated by the IL-1R1 promotes these activities through a MYD88 signaling pathway similar to those associated with Toll receptors. Recombinant rat IL-1 $\beta$  is a non-glycosylated protein, containing 152 amino acids, with a molecular weight of 17.3 kDa.

<b>Synonyms:</b>	Catabolin, LAF, EP, LEM, MCF
<b>Species of Origin:</b>	Rat
<b>Expressed in:</b>	E. coli
<b>Type:</b>	Recombinant Protein
<b>Low Endotoxin:</b>	Yes

**Target Details**

<b>Gene Name:</b>	Il1b
<b>Purity/Specificity:</b>	Interleukin-1 beta purity was determined to be greater than 97% as determined by HpLC, analysis by UV-Spectroscopy at 280nm, and by reducing and non-reducing SDS-pAGE.
<b>Relevant Links:</b>	<ul style="list-style-type: none"><li>• <a href="#">UniProtKB - Q63264</a></li></ul>

## Application Details

<b>Tested Applications:</b>	SDS-PAGE
<b>Suggested Applications:</b>	Cellular Assay (Based on references)
<b>Application Note:</b>	Interleukin-1-beta Recombinant Protein has been tested by SDS-PAGE and biological activity and is suitable as a control for polyclonal or monoclonal anti-Interleukin-1-beta in immunological assays.
<b>Assay Dilutions:</b>	All assays should be optimized by the user. Recommended dilutions (if any) may be listed below.
<b>Other:</b>	Endotoxin Level: Measured by kinetic LAL analysis and is typically $\leq 1$ EU/ $\mu$ g protein. Biologic Activity: The activity is determined by the dose-dependent proliferation of mouse D10S cells and is typically less than 1 ng/mL.

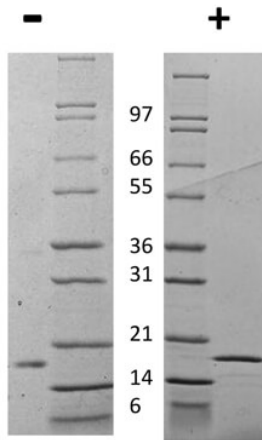
## Formulation

<b>Physical State:</b>	Lyophilized
<b>Buffer:</b>	0.01 M Sodium Phosphate, pH 7.5
<b>Preservative:</b>	None
<b>Stabilizer:</b>	None
<b>Reconstitution Volume:</b>	100 $\mu$ L
<b>Reconstitution Buffer:</b>	Restore with deionized water (or equivalent)

## Shipping & Handling

<b>Shipping Condition:</b>	Ambient
<b>Storage Condition:</b>	Store vial at 4° C prior to restoration. Dilute only prior to immediate use. Maintain sterility. This product DOES NOT contain preservative. DO NOT VORTEX. We recommend adding a carrier protein such as HSA or BSA to 0.1% (i.e. 1.0 mg/mL). For best results aliquot contents and freeze at -20° C or colder. Avoid cycles of freezing and thawing. Centrifuge vial before each opening to dislodge contents from the cap and to clarify if contents are not clear after standing at room temperature.
<b>Expiration:</b>	Expiration date is six (6) months from date of receipt.

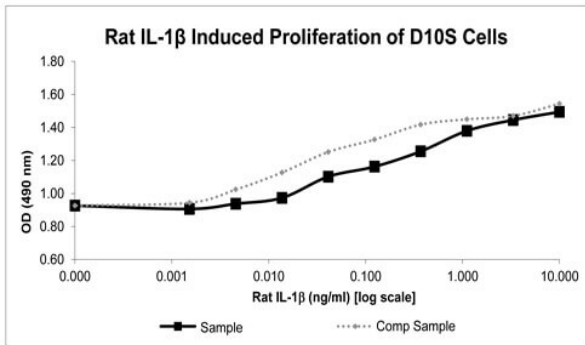
## Images



**SDS-PAGE**

SDS-PAGE of Rat Interleukin-1-beta Recombinant Protein.  
 Lane 1: 1 µg Rat IL-1 Beta in non-reducing conditions (-).  
 Lane 2: Molecular weight marker. Lane 3: 1 µg Rat IL-1 Beta in reducing conditions (+). Lane 4: Molecular weight marker.  
 Rat IL-1 Beta has a predicted MW of 17.3 kDa.

**Rat IL-1β Bioactivity Data**



**SDS-PAGE**

Bioactivity of Rat Interleukin-1 beta Recombinant Protein.  
 D10S cells were cultured with 0 to 10 ng/mL Rat IL-1 beta.  
 Cell proliferation was measured after 44 hours and the linear portion of the curve was used to calculate the ED50. The ED50 of Rat IL-1 beta is 0.15-0.22 ng/mL. This value is comparable to expected range of less than 1 ng/mL.

**Disclaimer**

This product is for research use only and is not intended for therapeutic or diagnostic applications. Please contact a technical service representative for more information. All products of animal origin manufactured by Rockland Immunochemicals are derived from starting materials of North American origin. Collection was performed in United States Department of Agriculture (USDA) inspected facilities and all materials have been inspected and certified to be free of disease and suitable for exportation. All properties listed are typical characteristics and are not specifications. All suggestions and data are offered in good faith but without guarantee as conditions and methods of use of our products are beyond our control. All claims must be made within 30 days following the date of delivery. The prospective user must determine the suitability of our materials before adopting them on a commercial scale. Suggested uses of our products are not recommendations to use our products in violation of any patent or as a license under any patent of Rockland Immunochemicals, Inc. If you require a commercial license to use this material and do not have one, then return this material, unopened to: Rockland Inc., P.O. BOX 5199, Limerick, Pennsylvania, USA.