



SZABO SCANDIC

Part of Europa Biosite

Produktinformation



Forschungsprodukte & Biochemikalien



Zellkultur & Verbrauchsmaterial



Diagnostik & molekulare Diagnostik



Laborgeräte & Service

Weitere Information auf den folgenden Seiten!
See the following pages for more information!



Lieferung & Zahlungsart

siehe unsere [Liefer- und Versandbedingungen](#)

Zuschläge

- Mindermengenzuschlag
- Trockeneiszuschlag
- Gefahrgutzuschlag
- Expressversand

SZABO-SCANDIC HandelsgmbH

Quellenstraße 110, A-1100 Wien

T. +43(0)1 489 3961-0

F. +43(0)1 489 3961-7

mail@szabo-scandic.com

www.szabo-scandic.com

[linkedin.com/company/szaboscandic](https://www.linkedin.com/company/szaboscandic) 

Datasheet for 110-1102

Mouse IgG (H&L) Antibody**Overview**

Description:	Goat Anti-Mouse IgG (H&L) Antibody - 110-1102
Item No.:	110-1102
Size:	2 mL
Applications:	WB
Reactivity:	Mouse
Host Species:	Goat

Product Details

Background:	MOUSE IgG (H&L) (GOAT) Antibody generated in sheep detects specifically mouse IgG whole molecule. Anti-mouse IgG antibody is ideal for investigators involved in serum protein component research.
Synonyms:	Goat Anti-Mouse Ab, goat anti-mouse IgG, Mouse Secondary Antibody, Mouse Antibody in Goat, Gt-a-Mouse Antibody
Host Species:	Goat
Specificity:	IgG (H&L)
Clonality:	Polyclonal
Format:	Antiserum

Target Details

Reactivity:	Mouse
Immunogen:	Mouse IgG whole molecule
Purity/Specificity:	Anti-MOUSE IgG (H&L) (GOAT) Antibody was prepared from monospecific antiserum by a delipidation and defibrination. Anti-MOUSE IgG (H&L) (GOAT) Antibody Assay by immunoelectrophoresis resulted in a single precipitin arc against anti-goat serum, Mouse IgG and Mouse Serum.

Application Details

Tested Applications:	WB
Application Note:	Anti-MOUSE IgG (H&L) (GOAT) Antibody has been tested by western blot and is suitable for dot blot, ELISA, immunoperoxidase electron microscopy and immunohistochemistry as well as other peroxidase-antibody based enzymatic assays requiring lot-to-lot consistency. Specific conditions should be optimized by user.
Assay Dilutions:	All assays should be optimized by the user. Recommended dilutions (if any) may be listed below.
ELISA:	1:20,000 - 1:100,000
IHC:	1:1,000 - 1:5,000
WB:	1:2,000 - 1:10,000

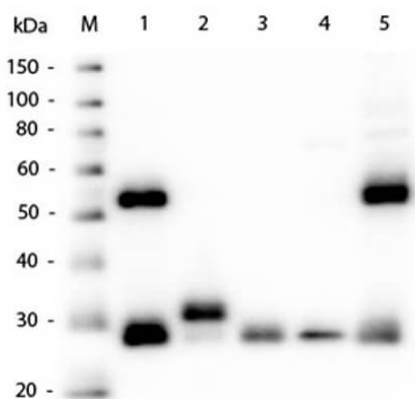
Formulation

Physical State:	Lyophilized
Concentration:	85 mg/mL by Refractometry
Buffer:	0.01 M Sodium Phosphate, 0.15 M Sodium Chloride, pH 7.2
Preservative:	0.01% (w/v) Sodium Azide
Stabilizer:	None
Reconstitution Volume:	2.0 mL
Reconstitution Buffer:	Restore with deionized water (or equivalent)

Shipping & Handling

Shipping Condition:	Ambient
Storage Condition:	Store vial at 4° C prior to restoration. For extended storage aliquot contents and freeze at -20° C or below. Avoid cycles of freezing and thawing. Centrifuge product if not completely clear after standing at room temperature. This product is stable for several weeks at 4° C as an undiluted liquid. Dilute only prior to immediate use.
Expiration:	Expiration date is one (1) year from date of receipt.

Images



Western Blot

Western Blot of Goat Anti-Mouse IgG (H&L) Antibody. Lane M: Molecular Ladder. Lane 1: Mouse IgG whole molecule (p/n 010-0102). Lane 2: Mouse IgG F(c) Fragment (p/n 010-0103). Lane 3: Mouse IgG F(ab) Fragment (p/n 010-0105). Lane 4: Mouse IgM Kappa (p/n 010-0107). Lane 5: Mouse Serum (p/n D308-05). Load: 50ng per lane. Block: (p/n MB-070) for 30 min at RT. Primary Antibody: Anti-Mouse IgG (H&L) Antibody 1:1000 for 60 min at RT. Secondary antibody: HRP Donkey Anti-Goat IgG (p/n 705-703-125) 1:40,000 for 30 min at RT. Predicted/Observed Size: 28 and 55 kDa for Mouse IgG, F(c), F(ab), IgM Kappa, and Serum. Mouse F(c) migrates slightly higher.

Disclaimer

This product is for research use only and is not intended for therapeutic or diagnostic applications. Please contact a technical service representative for more information. All products of animal origin manufactured by Rockland Immunochemicals are derived from starting materials of North American origin. Collection was performed in United States Department of Agriculture (USDA) inspected facilities and all materials have been inspected and certified to be free of disease and suitable for exportation. All properties listed are typical characteristics and are not specifications. All suggestions and data are offered in good faith but without guarantee as conditions and methods of use of our products are beyond our control. All claims must be made within 30 days following the date of delivery. The prospective user must determine the suitability of our materials before adopting them on a commercial scale. Suggested uses of our products are not recommendations to use our products in violation of any patent or as a license under any patent of Rockland Immunochemicals, Inc. If you require a commercial license to use this material and do not have one, then return this material, unopened to: Rockland Inc., P.O. BOX 5199, Limerick, Pennsylvania, USA.