



# SZABO SCANDIC

Part of Europa Biosite

## Produktinformation



Forschungsprodukte & Biochemikalien



Zellkultur & Verbrauchsmaterial



Diagnostik & molekulare Diagnostik



Laborgeräte & Service

Weitere Information auf den folgenden Seiten!  
See the following pages for more information!



### Lieferung & Zahlungsart

siehe unsere [Liefer- und Versandbedingungen](#)

### Zuschläge

- Mindermengenzuschlag
- Trockeneiszuschlag
- Gefahrgutzuschlag
- Expressversand

### SZABO-SCANDIC HandelsgmbH

Quellenstraße 110, A-1100 Wien

T. +43(0)1 489 3961-0

F. +43(0)1 489 3961-7

[mail@szabo-scandic.com](mailto:mail@szabo-scandic.com)

[www.szabo-scandic.com](http://www.szabo-scandic.com)

[linkedin.com/company/szaboscandic](https://www.linkedin.com/company/szaboscandic)



**Datasheet for 200-401-135S****Carboxypeptidase Y Antibody****Overview**

<b>Description:</b>	Anti-Carboxypeptidase Y (RABBIT) Antibody - 200-401-135S
<b>Item No.:</b>	200-401-135S
<b>Size:</b>	25 µL
<b>Applications:</b>	ELISA, WB
<b>Reactivity:</b>	<i>S. cerevisiae</i>
<b>Host Species:</b>	Rabbit

**Product Details**

<b>Background:</b>	Carboxypeptidase Y is involved in degradation of small peptides. It digests preferentially peptides containing an aliphatic or hydrophobic residue in P1' position, as well as methionine, leucine or phenylalanine in P1 position of ester substrate. Carboxypeptidase that catalyzes the release of a C-terminal amino acid with broad specificity. It is inhibited by ZPCK.
<b>Synonyms:</b>	rabbit anti-Carboxypeptidase Y antibody, Carboxypeptidase YSCY antibody, CPY1 antibody, LBC1 antibody, PRC1 antibody, Vacuolar carboxypeptidase Y antibody, YMR297W antibody, Carboxypeptidase C
<b>Host Species:</b>	Rabbit
<b>Clonality:</b>	Polyclonal
<b>Format:</b>	IgG

**Target Details**

<b>Gene Name:</b>	PRC1
<b>Reactivity:</b>	<i>S. cerevisiae</i>
<b>Immunogen Type:</b>	Native Protein
<b>Immunogen:</b>	Carboxypeptidase Y [Baker's Yeast]

**Purity/Specificity:** Anti-Carboxypeptidase Y is an IgG fraction antibody purified from monospecific antiserum by a multi-step process which includes delipidation, salt fractionation and ion exchange chromatography followed by extensive dialysis against the buffer stated above. Assay by immunoelectrophoresis resulted in a single precipitin arc against anti-Rabbit Serum as well as purified and partially purified Carboxypeptidase Y [Baker's Yeast]. Cross reactivity against Carboxypeptidase Y from other tissues and species may occur but have not been specifically determined.

**Relevant Links:**

- [UniProtKB - P00729](#)
- [NCBI - NP\\_014026.1](#)
- [GeneID - 855343](#)

## Application Details

**Tested Applications:** ELISA, WB

**Application Note:** Carboxypeptidase Y Antibody has been tested by ELISA and western blot and is assayed against 1.0 µg of Carboxypeptidase Y [Baker's Yeast] in a standard ELISA using Peroxidase conjugated Affinity Purified anti-Rabbit IgG [H&L] (Goat) code #611-1302 and ABTS (2,2'-azino-bis-[3-ethylbenthiazoline-6-sulfonic acid]) code # ABTS-100 as a substrate for 30 minutes at room temperature. A working dilution of 1:10,000 to 1:42,000 is suggested for this product.

**Assay Dilutions:** All assays should be optimized by the user. Recommended dilutions (if any) may be listed below.

**ELISA:** 10,000 - 1:42,000

**WB:** 1:5,000

## Formulation

**Physical State:** Liquid (sterile filtered)

**Concentration:** 1.0 mg/ml by UV absorbance at 280 nm

**Buffer:** 0.02 M Potassium Phosphate, 0.15 M Sodium Chloride, pH 7.2

**Preservative:** 0.01% (w/v) Sodium Azide

**Stabilizer:** None

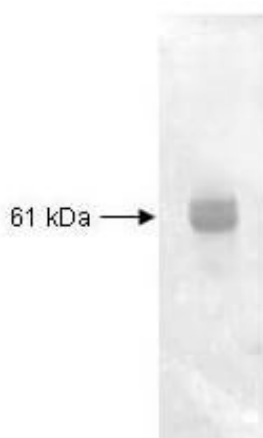
## Shipping & Handling

**Shipping Condition:** Dry Ice

**Storage Condition:** Store vial at -20° C or below prior to opening. This vial contains a relatively low volume of reagent (25 µL). To minimize loss of volume dilute 1:10 by adding 225 µL of the buffer stated above directly to the vial. Recap, mix thoroughly and briefly centrifuge to collect the volume at the bottom of the vial. Use this intermediate dilution when calculating final dilutions as recommended below. Store the vial at -20°C or below after dilution. Avoid cycles of freezing and thawing.

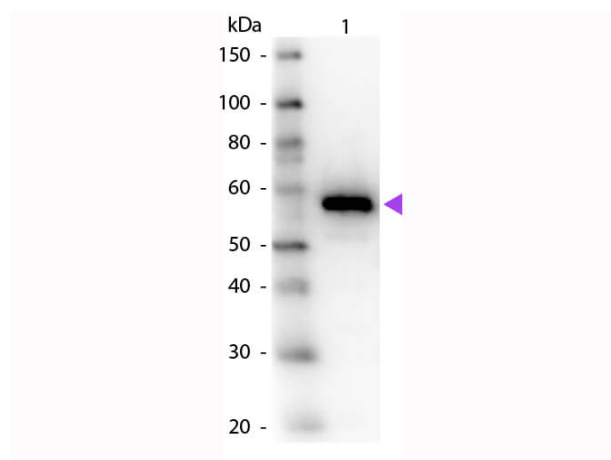
**Expiration:** Expiration date is one (1) year from date of receipt.

## Images



### Western Blot

Western Blot of Rabbit anti-Carboxypeptidase Y (Baker's Yeast) antibody. Lane 1: cellular extracts. Lane 2: none. Load: 10 µg per lane. Primary antibody: Carboxypeptidase Y antibody at 1:5000 for overnight at 4°C. Secondary antibody: HRP Goat-a-Rabbit IgG [H&L] secondary antibody at 1:4,000 for 45 min at RT. Block: 5% BLOTTO overnight at 4°C. Predicted/Observed size: 61 kDa, 61 kDa for Carboxypeptidase Y. Other band(s): none.



### Western Blot

Western Blot of Rabbit anti-Carboxypeptidase Y Antibody. Lane 1: Carboxypeptidase Y. Load: 50 ng per lane. Primary antibody: Carboxypeptidase Y primary antibody at 1:1,000 overnight at 4°C. Secondary antibody: Peroxidase rabbit secondary antibody at 1:40,000 for 30 min at RT. Block: MB-070 for 30 min at RT. Predicted/Observed size: 53 kDa, 57 kDa for Carboxypeptidase Y. Other band(s): None.

## Disclaimer

This product is for research use only and is not intended for therapeutic or diagnostic applications. Please contact a technical service representative for more information. All products of animal origin manufactured by Rockland Immunochemicals are derived from starting materials of North American origin. Collection was performed in United States Department of Agriculture (USDA) inspected facilities and all materials have been inspected and certified to be free of disease and suitable for exportation. All properties listed are typical characteristics and are not specifications. All suggestions and data are offered in good faith but without guarantee as conditions and methods of use of our products are beyond our control. All claims must be made within 30 days following the date of delivery. The prospective user must determine the suitability of our materials before adopting them on a commercial scale. Suggested uses of our products are not recommendations to use our products in violation of any patent or as a license under any patent of Rockland Immunochemicals, Inc. If you require a commercial license to use this material and do not have one, then return this material, unopened to: Rockland Inc., P.O. BOX 5199, Limerick, Pennsylvania, USA.