



SZABO SCANDIC

Part of Europa Biosite

Produktinformation



Forschungsprodukte & Biochemikalien



Zellkultur & Verbrauchsmaterial



Diagnostik & molekulare Diagnostik



Laborgeräte & Service

Weitere Information auf den folgenden Seiten!
See the following pages for more information!



Lieferung & Zahlungsart

siehe unsere [Liefer- und Versandbedingungen](#)

Zuschläge

- Mindermengenzuschlag
- Trockeneiszuschlag
- Gefahrgutzuschlag
- Expressversand

SZABO-SCANDIC Handels GmbH

Quellenstraße 110, A-1100 Wien

T. +43(0)1 489 3961-0

F. +43(0)1 489 3961-7

mail@szabo-scandic.com

www.szabo-scandic.com

[linkedin.com/company/szaboscandic](https://www.linkedin.com/company/szaboscandic)



Datasheet for 209-301-003

Human IgG Fc Antibody

Overview

Description:	Mouse Anti-Human IgG Fc Antibody - 209-301-003
Item No.:	209-301-003
Size:	100 µg
Applications:	ELISA, WB
Reactivity:	Human
Host Species:	Mouse

Product Details

Background:	Anti-Human IgG F(c) generated in mouse detects Human F(c). A proteolytic fragment of immunoglobulin G (IgG) obtained by limited digestion with the enzyme papain under controlled conditions of temperature, time and pH. Receptors bind the Fc portion of human IgG and often this fragment is removed from immunoglobulins to minimize receptor binding and lower background reactivity. Secondary Antibodies are available in a variety of formats and conjugate types. When choosing a secondary antibody product, consideration must be given to species and immunoglobulin specificity, conjugate type, fragment and chain specificity, level of cross-reactivity, and host-species source and fragment composition. F(c) Antibody is ideal for investigators who routinely perform flow cytometry, immunohistochemistry or IHC and other immunoassays.
Synonyms:	Human IgG F(c) Antibody, Human IgG Fc Antibody, Ms-a-Human IgG Fc, Human IgG F(c) Antibody in Mouse, Human Secondary Antibody
Host Species:	Mouse
Specificity:	IgG Fc
Clonality:	Monoclonal
Clone ID:	3D8.H7.D4
Format:	IgG1

Target Details

Reactivity:	Human
--------------------	-------

Immunogen Type:	Native Protein
Immunogen:	Anti-Human IgG F(c) monoclonal antibody was produced by repeated immunization with Human IgG F(c) fragment in mice.
Purity/Specificity:	Anti-Human IgG F(c) Antibody was prepared from concentrated roller bottle supernatant by Protein A chromatography sepharose beads. Assay by immunoelectrophoresis resulted in a single precipitin arc against anti-Mouse Serum, Human IgG, Human Serum and Human F(c). No reaction was observed against Human F(ab).

Application Details

Tested Applications:	ELISA, WB
Application Note:	Human IgG F(c) antibody has been tested by ELISA and Western Blot. This product is suitable for immunoelectrophoresis, western-blot, competitive western-blot, ELISA and competitive ELISA assays. Specific conditions for reactivity and signal detection should be optimized by the end user.
Assay Dilutions:	All assays should be optimized by the user. Recommended dilutions (if any) may be listed below.
ELISA:	1:-1000-1:10000
WB:	1:1000 - 1:2000

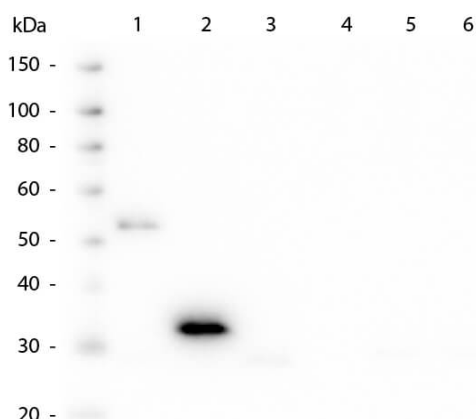
Formulation

Physical State:	Liquid (sterile filtered)
Concentration:	1.0 mg/ml by UV absorbance at 280 nm
Buffer:	0.02 M Potassium Phosphate, 0.15 M Sodium Chloride, pH 7.2
Preservative:	0.01% (w/v) Sodium Azide
Stabilizer:	None

Shipping & Handling

Shipping Condition:	Dry Ice
Storage Condition:	Store vial at -20° C prior to opening. Aliquot contents and freeze at -20° C or below for extended storage. Avoid cycles of freezing and thawing. Centrifuge product if not completely clear after standing at room temperature. This product is stable for several weeks at 4° C as an undiluted liquid. Dilute only prior to immediate use.
Expiration:	Expiration date is one (1) year from date of receipt.

Images



Western Blot

Western Blot of Mouse anti-Human F(c) antibody. Lane 1: Human IgG (p/n 009-0102). Lane 2: Human Fc (p/n 009-0103). Lane 3: Human Fab (p/n 009-0105). Lane 4: Human Fab2 (p/n 009-0104). Lane 5: Human IgM (p/n 009-0107). Lane 6: Human IgM Fc5 μ (p/n 009-0131). Load: 50 ng per lane. Primary antibody: Anti-Human F(c) monoclonal antibody at 1:1000 for overnight at 4°C. Secondary antibody: HRP mouse secondary antibody at 1:40,000 for 30 min at RT. Block: MB-070 for 30 min at RT. Predicted MW: ~28kDa. Observed MW: ~33kDa for Human Fc.

Disclaimer

This product is for research use only and is not intended for therapeutic or diagnostic applications. Please contact a technical service representative for more information. All products of animal origin manufactured by Rockland Immunochemicals are derived from starting materials of North American origin. Collection was performed in United States Department of Agriculture (USDA) inspected facilities and all materials have been inspected and certified to be free of disease and suitable for exportation. All properties listed are typical characteristics and are not specifications. All suggestions and data are offered in good faith but without guarantee as conditions and methods of use of our products are beyond our control. All claims must be made within 30 days following the date of delivery. The prospective user must determine the suitability of our materials before adopting them on a commercial scale. Suggested uses of our products are not recommendations to use our products in violation of any patent or as a license under any patent of Rockland Immunochemicals, Inc. If you require a commercial license to use this material and do not have one, then return this material, unopened to: Rockland Inc., P.O. BOX 5199, Limerick, Pennsylvania, USA.