



# SZABO SCANDIC

Part of Europa Biosite

## Produktinformation



Forschungsprodukte & Biochemikalien



Zellkultur & Verbrauchsmaterial



Diagnostik & molekulare Diagnostik



Laborgeräte & Service

Weitere Information auf den folgenden Seiten!  
See the following pages for more information!



### Lieferung & Zahlungsart

siehe unsere [Liefer- und Versandbedingungen](#)

### Zuschläge

- Mindermengenzuschlag
- Trockeneiszuschlag
- Gefahrgutzuschlag
- Expressversand

### SZABO-SCANDIC Handels GmbH

Quellenstraße 110, A-1100 Wien

T. +43(0)1 489 3961-0

F. +43(0)1 489 3961-7

[mail@szabo-scandic.com](mailto:mail@szabo-scandic.com)

[www.szabo-scandic.com](http://www.szabo-scandic.com)

[linkedin.com/company/szaboscandic](https://www.linkedin.com/company/szaboscandic) 

## Datasheet for 209-301-031

**Human IgM Fc5u Antibody****Overview**

<b>Description:</b>	Mouse Anti-Human IgM (Fc5 $\mu$ ) Antibody - 209-301-031
<b>Item No.:</b>	209-301-031
<b>Size:</b>	100 $\mu$ g
<b>Applications:</b>	ELISA, WB
<b>Reactivity:</b>	Human
<b>Host Species:</b>	Mouse

**Product Details**

<b>Background:</b>	Anti-Human IgM Fc5 $\mu$ antibody generated in mice specifically detects Fc5 $\mu$ portion of the human IgM heavy chain. Immunoglobulin M is the largest antibody isotype and the first to be secreted against an initial exposure to antigen. IgM is predominantly produced in the spleen. Formed from covalently linking 5 immunoglobulins together. Due to this large size, IgM is typically isolated to the serum. Anti-Human IgM Fc5 $\mu$ antibody is ideal for investigators in Immunology, Microbiology, and Cell Biology.
<b>Synonyms:</b>	mouse anti-Human IgM Fc5 $\mu$ Antibody, Human IgM Fc5u Antibody, Ms-a-Human IgM Fc5 $\mu$ Antibody, Human IgM Fc5 $\mu$ Antibody in Mouse, Human M Fc5 $\mu$ Secondary Antibody
<b>Host Species:</b>	Mouse
<b>Specificity:</b>	IgM Fc5 $\mu$
<b>Clonality:</b>	Monoclonal
<b>Clone ID:</b>	22G1.H8
<b>Format:</b>	IgG2b

**Target Details**

<b>Reactivity:</b>	Human
<b>Immunogen Type:</b>	Native Protein
<b>Immunogen:</b>	Anti-Human IgM Fc5 $\mu$ was produced by repeated immunization with Human IgM Fc5 $\mu$ fragment in mice.

<b>Purity/Specificity:</b>	Anti-Human IgM Fc5 $\mu$ Antibody was prepared from concentrated roller bottle supernatant by Protein A chromatography sepharose beads. Assay by immunoelectrophoresis resulted in a single precipitin arc against anti-Mouse Serum, Human IgM, Human Serum and Human Fc5 $\mu$ . No reaction was observed against Human IgG, Human IgA, Human Fc, Human Fab or Human Fab2.
----------------------------	---

## Application Details

<b>Tested Applications:</b>	ELISA, WB
<b>Application Note:</b>	Human IgM Fc5 $\mu$ antibody has been tested by ELISA and Western Blot. This product is suitable for immunoblotting (western or dot blot), ELISA, and immunohistochemistry requiring extremely low background levels, lot-to-lot consistency, high titer and specificity.
<b>Assay Dilutions:</b>	All assays should be optimized by the user. Recommended dilutions (if any) may be listed below.
<b>ELISA:</b>	1:1000 - 1:10000
<b>WB:</b>	1:1000-1:2000

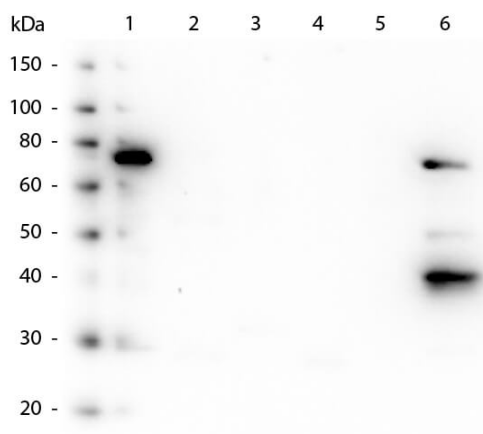
## Formulation

<b>Physical State:</b>	Liquid (sterile filtered)
<b>Concentration:</b>	1.0 mg/ml by UV absorbance at 280 nm
<b>Buffer:</b>	0.02 M Potassium Phosphate, 0.15 M Sodium Chloride, pH 7.2
<b>Preservative:</b>	0.01% (w/v) Sodium Azide
<b>Stabilizer:</b>	None

## Shipping & Handling

<b>Shipping Condition:</b>	Dry Ice
<b>Storage Condition:</b>	Store vial at -20° C prior to opening. Aliquot contents and freeze at -20° C or below for extended storage. Avoid cycles of freezing and thawing. Centrifuge product if not completely clear after standing at room temperature. This product is stable for several weeks at 4° C as an undiluted liquid. Dilute only prior to immediate use.
<b>Expiration:</b>	Expiration date is one (1) year from date of receipt.

## Images



#### Western Blot

Western Blot of Mouse anti-Human IgM Fc5 $\mu$  antibody. Lane 1: Human IgM (p/n 009-0107). Lane 2: Human IgG (p/n 009-0102). Lane 3: Human Fc (p/n 009-0103). Lane 4: Human Fab (p/n 009-0105). Lane 5: Human Fab2 (p/n 009-0104). Lane 6: Human IgM Fc5 $\mu$  (p/n 009-0131). Load: 50 ng whole molecule per lane. Primary antibody: anti-Human IgM Fc5 $\mu$  monoclonal antibody at 1:1000 for overnight at 4° C. Secondary antibody: Peroxidase anti-mouse secondary antibody at 1:40,000 for 30 min at RT. Block: MB-070 for 30 min at RT. Predicated/Observed size: 78 kDa, 78 kDa for Human IgM.

## Disclaimer

This product is for research use only and is not intended for therapeutic or diagnostic applications. Please contact a technical service representative for more information. All products of animal origin manufactured by Rockland Immunochemicals are derived from starting materials of North American origin. Collection was performed in United States Department of Agriculture (USDA) inspected facilities and all materials have been inspected and certified to be free of disease and suitable for exportation. All properties listed are typical characteristics and are not specifications. All suggestions and data are offered in good faith but without guarantee as conditions and methods of use of our products are beyond our control. All claims must be made within 30 days following the date of delivery. The prospective user must determine the suitability of our materials before adopting them on a commercial scale. Suggested uses of our products are not recommendations to use our products in violation of any patent or as a license under any patent of Rockland Immunochemicals, Inc. If you require a commercial license to use this material and do not have one, then return this material, unopened to: Rockland Inc., P.O. BOX 5199, Limerick, Pennsylvania, USA.