



SZABO SCANDIC

Part of Europa Biosite

Produktinformation



Forschungsprodukte & Biochemikalien



Zellkultur & Verbrauchsmaterial



Diagnostik & molekulare Diagnostik



Laborgeräte & Service

Weitere Information auf den folgenden Seiten!
See the following pages for more information!



Lieferung & Zahlungsart

siehe unsere [Liefer- und Versandbedingungen](#)

Zuschläge

- Mindermengenzuschlag
- Trockeneiszuschlag
- Gefahrgutzuschlag
- Expressversand

SZABO-SCANDIC Handels GmbH

Quellenstraße 110, A-1100 Wien

T. +43(0)1 489 3961-0

F. +43(0)1 489 3961-7

mail@szabo-scandic.com

www.szabo-scandic.com

[linkedin.com/company/szaboscandic](https://www.linkedin.com/company/szaboscandic)



Datasheet for 213-7102

Sheep IgG (H&L) Antibody**Overview**

Description:	Donkey Anti-Sheep IgG (H&L) Antibody - 213-7102
Item No.:	213-7102
Size:	50 mg
Applications:	ELISA, WB
Reactivity:	Sheep
Host Species:	Donkey

Product Details

Background:	Anti-Sheep IgG unconjugated antibody was generated in donkey and detects specifically sheep IgG. This primary unconjugated anti-Sheep antibody is ideal for investigators who routinely perform titration assays, western-blot, immunoprecipitation and more generally immunoassays.
Synonyms:	donkey anti-Sheep IgG Antibody, donkey anti-Sheep IgG Antibody
Host Species:	Donkey
Specificity:	IgG (H&L)
Clonality:	Polyclonal
Format:	IgG

Target Details

Reactivity:	Sheep
Immunogen Type:	Native Protein
Immunogen:	Sheep IgG whole molecule
Purity/Specificity:	Sheep IgG (H&L) Antibody is an IgG fraction antibody purified from monospecific antiserum by a multi-step process which includes delipidation, salt fractionation and ion exchange chromatography followed by extensive dialysis against the buffer stated above. Assay by immunoelectrophoresis resulted in a single precipitin arc against anti-Donkey Serum, Sheep IgG and Sheep Serum. This antibody will detect intact and immunoglobulin components from Sheep.

Application Details

Tested Applications:	ELISA, WB
Application Note:	Anti-Sheep IgG unconjugated antibody has been tested by ELISA and western blot and is suitable for multiple immunoassays including immunoblotting (western or dot blot), ELISA, immunoperoxidase electron microscopy and immunohistochemistry as well as other peroxidase-antibody based enzymatic assays requiring lot-to-lot consistency. The antibody may be conjugated to the end user specifications.
Assay Dilutions:	All assays should be optimized by the user. Recommended dilutions (if any) may be listed below.
ELISA:	1:20,000 - 1:100,000
IHC:	1:1,000 - 1:5,000
WB:	1:2,000 - 1:10,000

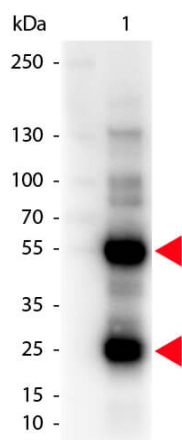
Formulation

Physical State:	Lyophilized
Concentration:	10.0 mg/mL by UV absorbance at 280 nm
Buffer:	0.01 M Sodium Phosphate, 0.15 M Sodium Chloride, pH 7.2
Preservative:	0.01% (w/v) Sodium Azide
Stabilizer:	None
Reconstitution Volume:	5.0 mL
Reconstitution Buffer:	Restore with deionized water (or equivalent)

Shipping & Handling

Shipping Condition:	Ambient
Storage Condition:	Store vial at 4° C prior to restoration. For extended storage aliquot contents and freeze at -20° C or below. Avoid cycles of freezing and thawing. Centrifuge product if not completely clear after standing at room temperature. This product is stable for several weeks at 4° C as an undiluted liquid. Dilute only prior to immediate use.
Expiration:	Expiration date is one (1) year from date of receipt.

Images



Western Blot

Western Blot of Donkey anti-Sheep IgG Antibody. Lane 1: Sheep IgG (p/n 013-0102). Load: 50 ng per lane. Primary antibody: Sheep antibody at 1,000 overnight at 4°C. Secondary antibody: Peroxidase donkey secondary antibody (p/n 616-1302) at 1:40,000 for 30 min at RT. Block: (p/n MB-070) for 30 min at RT. Predicted/Observed size: 28 & 55 kDa, 28 & 55 kDa for Sheep IgG.

Disclaimer

This product is for research use only and is not intended for therapeutic or diagnostic applications. Please contact a technical service representative for more information. All products of animal origin manufactured by Rockland Immunochemicals are derived from starting materials of North American origin. Collection was performed in United States Department of Agriculture (USDA) inspected facilities and all materials have been inspected and certified to be free of disease and suitable for exportation. All properties listed are typical characteristics and are not specifications. All suggestions and data are offered in good faith but without guarantee as conditions and methods of use of our products are beyond our control. All claims must be made within 30 days following the date of delivery. The prospective user must determine the suitability of our materials before adopting them on a commercial scale. Suggested uses of our products are not recommendations to use our products in violation of any patent or as a license under any patent of Rockland Immunochemicals, Inc. If you require a commercial license to use this material and do not have one, then return this material, unopened to: Rockland Inc., P.O. BOX 5199, Limerick, Pennsylvania, USA.