



SZABO SCANDIC

Part of Europa Biosite

Produktinformation



Forschungsprodukte & Biochemikalien



Zellkultur & Verbrauchsmaterial



Diagnostik & molekulare Diagnostik



Laborgeräte & Service

Weitere Information auf den folgenden Seiten!
See the following pages for more information!



Lieferung & Zahlungsart

siehe unsere [Liefer- und Versandbedingungen](#)

Zuschläge

- Mindermengenzuschlag
- Trockeneiszuschlag
- Gefahrgutzuschlag
- Expressversand

SZABO-SCANDIC HandelsgmbH

Quellenstraße 110, A-1100 Wien

T. +43(0)1 489 3961-0

F. +43(0)1 489 3961-7

mail@szabo-scandic.com

www.szabo-scandic.com

[linkedin.com/company/szaboscandic](https://www.linkedin.com/company/szaboscandic) 

Datasheet for 600-401-EM9**SkiP Antibody****Overview**

Description:	Anti-SkiP (RABBIT) Antibody - 600-401-EM9
Item No.:	600-401-EM9
Size:	100 µg
Applications:	ELISA, IF, IHC, WB
Reactivity:	Human, Mouse, Rat
Host Species:	Rabbit

Product Details

Background:	TGF-beta and the bone morphogenic proteins (BMPs) are key signaling proteins that regulate numerous cellular processes such as embryonic development and tumor genesis. Both signal through the Smad protein family and are negatively regulated by Ski and SnoN, two related proto-oncoproteins. Ski functions by binding to the Smad proteins activated by TGF-beta and the (BMPs) and preventing their phosphorylation, inhibiting their ability to bind DNA and activate the transcription of downstream genes. SkiP was originally identified as a Ski-interacting protein and was later found to augment the signals induced by TGF-beta but inhibit transcription induced by BMP-2 in C2C12 cells, suggesting that SkiP is a key player in the signaling cascades initiated by TGF-beta and the BMP protein family.
Synonyms:	SkiP Antibody, Bx42, SKIP, Prp45, SKIIP, PRPF45, NCOA-62, SNW domain-containing protein 1, Nuclear protein SkiP, FUN20, SKIP1
Host Species:	Rabbit
Clonality:	Polyclonal
Format:	IgG

Target Details

Gene Name:	SNW1
Reactivity:	Human, Mouse, Rat
Immunogen Type:	Conjugated Peptide

Immunogen:	Anti-SkiP antibody was prepared from whole rabbit serum produced by repeated immunizations with a 16 amino acid synthetic peptide from near the C-terminus of human SkiP.
Purity/Specificity:	Anti-SkiP Antibody was affinity purified from monospecific antiserum by immunoaffinity chromatography. Cross reactivity with SkiP from other sources has not been determined.
Relevant Links:	<ul style="list-style-type: none">• UniProtKB - Q13573• GeneID - 22938• NCBI - NP_036377

Application Details

Tested Applications:	ELISA, IF, IHC, WB
Application Note:	Anti-SkiP Antibody has been tested for use in ELISA, Western Blotting, Immunohistochemistry, and Immunofluorescence. Expect a band at approximately 61 kDa in Western Blots using positive control mouse skeletal muscle lysate, human kidney tissue for IF, or other specific cell lysates and tissues. Specific conditions for reactivity should be optimized by the end user.
Assay Dilutions:	All assays should be optimized by the user. Recommended dilutions (if any) may be listed below.
ELISA:	1:5,000 - 1:10,000
IF:	20 µg/mL
IHC:	20 µg/mL
WB:	0.5 µg/mL

Formulation

Physical State:	Liquid (sterile filtered)
Concentration:	1.0 mg/mL by UV absorbance at 280 nm
Buffer:	0.01 M Sodium Phosphate, 0.25 M Sodium Chloride, pH 7.2
Preservative:	0.02% (w/v) Sodium Azide
Stabilizer:	None

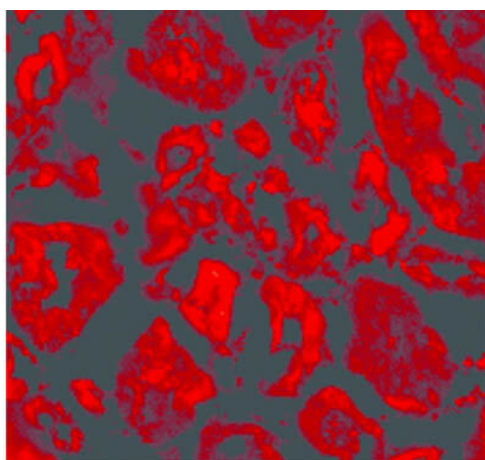
Shipping & Handling

Shipping Condition:	Dry Ice
----------------------------	---------

Storage Condition: Store vial at -20° C prior to opening. Aliquot contents and freeze at -20° C or below for extended storage. Avoid cycles of freezing and thawing. Centrifuge product if not completely clear after standing at room temperature. This product is stable for several weeks at 4° C as an undiluted liquid. Dilute only prior to immediate use.

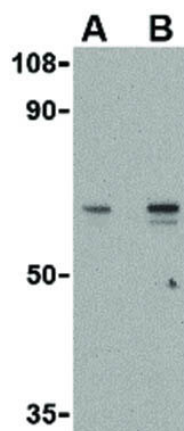
Expiration: Expiration date is one (1) year from date of receipt.

Images



Immunofluorescence Microscopy

Immunofluorescence Microscopy of SkiP antibody. Tissue: Human kidney tissue. Fixation: 0.5% PFA. Antigen retrieval: not required. Primary antibody: SkiP antibody at 20 µg/mL for 1 h at RT. Secondary antibody: Fluorescein rabbit secondary antibody at 1:10,000 for 45 min at RT. Localization: SkiP is nuclear. Staining: SkiP as red fluorescent signal.



Western Blot

Western Blot of SkiP antibody. Lane 1: Mouse skeletal muscle tissue lysate with SkiP at 0.5 µg/mL. Lane 2: Mouse skeletal muscle tissue lysate with SkiP at 1 µg/mL. Load: 35 µg per lane. Secondary antibody: Peroxidase rabbit secondary antibody at 1:10,000 for 45 min at RT. Block: 5% BLOTTO overnight at 4°C. Predicted/Observed size: 61.5 kDa, 57 kDa for SkiP. Other band(s): SkiP splice variants and isoforms.

Disclaimer

This product is for research use only and is not intended for therapeutic or diagnostic applications. Please contact a technical service representative for more information. All products of animal origin manufactured by Rockland Immunochemicals are derived from starting materials of North American origin. Collection was performed in United States Department of Agriculture (USDA) inspected facilities and all materials have been inspected and certified to be free of disease and suitable for exportation. All properties listed are typical characteristics and are not specifications. All suggestions and data are offered in good faith but without guarantee as conditions and methods of use of our products are beyond our control. All claims must be made within 30 days following the date of delivery. The prospective user must determine the suitability of our materials before adopting them on a commercial scale. Suggested uses of our products are not recommendations to use our products in violation of any patent or as a license under any patent of Rockland Immunochemicals, Inc. If you require a commercial license to use this material and do not have one, then return this material, unopened to: Rockland Inc., P.O. BOX 5199, Limerick, Pennsylvania, USA.