



SZABO SCANDIC

Part of Europa Biosite

Produktinformation



Forschungsprodukte & Biochemikalien



Zellkultur & Verbrauchsmaterial



Diagnostik & molekulare Diagnostik



Laborgeräte & Service

Weitere Information auf den folgenden Seiten!
See the following pages for more information!



Lieferung & Zahlungsart

siehe unsere [Liefer- und Versandbedingungen](#)

Zuschläge

- Mindermengenzuschlag
- Trockeneiszuschlag
- Gefahrgutzuschlag
- Expressversand

SZABO-SCANDIC HandelsgmbH

Quellenstraße 110, A-1100 Wien

T. +43(0)1 489 3961-0

F. +43(0)1 489 3961-7

mail@szabo-scandic.com

www.szabo-scandic.com

[linkedin.com/company/szaboscandic](https://www.linkedin.com/company/szaboscandic) 

Datasheet for 603-103-002

Chicken IgG (H&L) Antibody Peroxidase Conjugated**Overview**

Description:	Goat Anti-Chicken IgG (H&L) Antibody Peroxidase Conjugated - 603-103-002
Item No.:	603-103-002
Size:	2 mg
Applications:	ELISA, WB, Functional Assay
Reactivity:	Chicken
Host Species:	Goat

Product Details

Background:	Anti-Chicken IgG Peroxidase Antibody generated in goat detects chicken IgY. Secreted as part of the adaptive immune response by plasma B cells, immunoglobulin G constitutes 75% of serum immunoglobulins. Immunoglobulin G binds to viruses, bacteria, as well as fungi and facilitates their destruction or neutralization via agglutination (and thereby immobilizing them), activation of the compliment cascade, and opsonization for phagocytosis. The whole IgG molecule possesses both the F(c) region, recognized by high-affinity Fc receptor proteins, as well as the F(ab) region possessing the epitope-recognition site. Both heavy and light chains of the antibody molecule are present.
Synonyms:	Anti-Chicken Antibody, Gt-a-Chicken IgG, Anti-Chicken IgY, gt-a-ch IgY, gt-a-ch IgG, Gt-a-Chicken IgY, Chicken Antibody in Goat, Chicken Secondary Antibody
Host Species:	Goat
Specificity:	IgG (H&L)
Conjugate:	Peroxidase (HRP)
Clonality:	Polyclonal
Format:	IgG

Target Details

Reactivity:	Chicken
Immunogen Type:	Native Protein

Immunogen:	Anti-Chicken IgG (H&L) was produced by repeated immunization with Chicken IgG whole molecule in goat.
Purity/Specificity:	This product was prepared from monospecific antiserum by immunoaffinity chromatography using Chicken IgG coupled to agarose beads. Assay by immunoelectrophoresis resulted in a single precipitin arc against anti-Peroxidase, anti-Goat Serum, Chicken IgG and Chicken Serum.

Application Details

Tested Applications:	ELISA, WB
Suggested Applications:	Functional Assay (Based on references)
Application Note:	Anti-Chicken IgG (H&L) HRP Conjugated Antibody is tested in immunoelectrophoresis, western-blot, competitive western-blot, ELISA and competitive ELISA assays. Anti-Chicken IgG HRP Antibody is suitable for IHC. Specific conditions for reactivity and signal detection should be optimized by the end user.
Assay Dilutions:	All assays should be optimized by the user. Recommended dilutions (if any) may be listed below.
ELISA:	1:20,000 - 1:100,000
IHC:	1:1,000 - 1:10,000
WB:	1:1,000 - 1:5,000

Formulation

Physical State:	Lyophilized
Concentration:	2.0 mg/mL by UV absorbance at 280 nm
Buffer:	0.02 M Potassium Phosphate, 0.15 M Sodium Chloride, pH 7.2
Preservative:	0.01% (w/v) Gentamicin Sulfate. Do NOT add Sodium Azide!
Stabilizer:	10 mg/mL Bovine Serum Albumin (BSA) - Immunoglobulin and Protease free
Reconstitution Volume:	1.0 mL
Reconstitution Buffer:	Restore with deionized water (or equivalent)

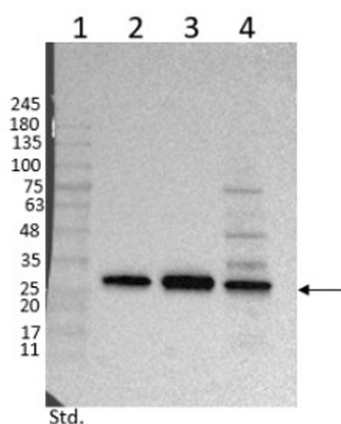
Shipping & Handling

Shipping Condition:	Ambient
----------------------------	---------

Storage Condition: Store vial at 4° C prior to restoration. For extended storage aliquot contents and freeze at -20° C or below. Avoid cycles of freezing and thawing. Centrifuge product if not completely clear after standing at room temperature. This product is stable for several weeks at 4° C as an undiluted liquid. Dilute only prior to immediate use.

Expiration: Expiration date is one (1) year from date of receipt.

Images



Western Blot

Western Blot of Goat Anti-Chicken IgG Peroxidase Conjugated Antibody.

Lane 1: Opal Prestained Molecular Weight Ladder (p/n MB-210-0500).

Lane 2: RFP (p/n 000-001-379) [0.5µg].

Lane 3: RFP (p/n 000-001-379) [0.1µg].

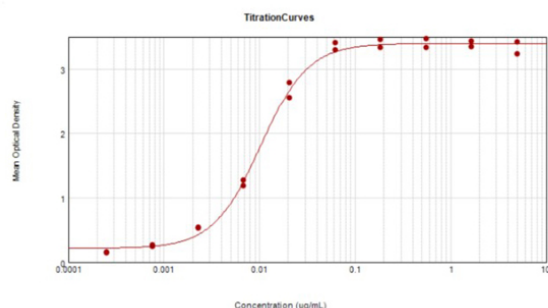
Lane 4: HEK293T whole cell lysate spiked RFP [10µg+0.1µg].

Primary Antibody: Rabbit Anti-RFP (p/n 600-401-379) at 1.0µg/mL o/n at 4°C.

Secondary Antibody: Goat Anti-Chicken IgG HRP (p/n 603-103-002) at 1:40,000 for 30 mins at RT.

Blocking: Universal BlockOut Buffer (p/n MB-073) for 30 mins at RT.

Predicted MW: ~27kDa.



ELISA

ELISA results of Goat Anti-Chicken IgG Antibody Peroxidase Conjugated tested against purified Chicken IgG protein. Each well was coated in duplicate with 1.0 µg of Chicken IgG (p/n 003-0102). The starting dilution of antibody was 5µg/ml and the X-axis represents the Log10 of a 3-fold dilution. The titer is 1:97,900. This titration is a 4-parameter curve fit where the IC50 is defined as the titer of the antibody. Assay performed using 3% fish gelatin as blocking buffer and TMB substrate p/n TMBE-1000.

References

- Mewono L et al. Interleukin-21 is associated with IgG1 and IgG3 antibodies to erythrocyte-binding antigen-175 peptide 4 of Plasmodium falciparum in Gabonese children with acute falciparum malaria. *Eur Cytokine Netw.* (2008)

Disclaimer

This product is for research use only and is not intended for therapeutic or diagnostic applications. Please contact a technical service representative for more information. All products of animal origin manufactured by Rockland Immunochemicals are derived from starting materials of North American origin. Collection was performed in United States Department of Agriculture (USDA) inspected facilities and all materials have been inspected and certified to be free of disease and suitable for exportation. All properties listed are typical characteristics and are not specifications. All suggestions and data are offered in good faith but without guarantee as conditions and methods of use of our products are beyond our control. All claims must be made within 30 days following the date of delivery. The prospective user must determine the suitability of our materials before adopting them on a commercial scale. Suggested uses of our products are not recommendations to use our products in violation of any patent or as a license under any patent of Rockland Immunochemicals, Inc. If you require a commercial license to use this material and do not have one, then return this material, unopened to: Rockland Inc., P.O. BOX 5199, Limerick, Pennsylvania, USA.