



SZABO SCANDIC

Part of Europa Biosite

Produktinformation



Forschungsprodukte & Biochemikalien



Zellkultur & Verbrauchsmaterial



Diagnostik & molekulare Diagnostik



Laborgeräte & Service

Weitere Information auf den folgenden Seiten!
See the following pages for more information!



Lieferung & Zahlungsart

siehe unsere [Liefer- und Versandbedingungen](#)

Zuschläge

- Mindermengenzuschlag
- Trockeneiszuschlag
- Gefahrgutzuschlag
- Expressversand

SZABO-SCANDIC HandelsgmbH

Quellenstraße 110, A-1100 Wien

T. +43(0)1 489 3961-0

F. +43(0)1 489 3961-7

mail@szabo-scandic.com

www.szabo-scandic.com

[linkedin.com/company/szaboscandic](https://www.linkedin.com/company/szaboscandic) 

Datasheet for 603-4504**Chicken IgG F(ab')₂ Antibody Alkaline Phosphatase Conjugated****Overview**

Description:	Rabbit Anti-Chicken IgG F(ab') ₂ Antibody Alkaline Phosphatase Conjugated - 603-4504
Item No.:	603-4504
Size:	1 mg
Applications:	Dot Blot, ELISA
Reactivity:	Chicken
Host Species:	Rabbit

Product Details

Background:	Anti-Chicken IgG F(ab') ₂ Antibody generated in rabbit is a proteolytic fragment of immunoglobulin G (IgG) obtained by limited digestion with the enzyme pepsin under controlled conditions of temperature, time and pH. F(ab') ₂ molecules lack the Fc portion of IgG and therefore receptors that bind Chicken IgG F(c) will not bind Chicken IgG F(ab') ₂ molecules.
Synonyms:	rabbit anti-Chicken IgG F(ab') ₂ Antibody Alkaline Phosphatase Conjugation, rabbit anti-Chicken IgG Fab2 Fragment Alk Phos Conjugated Antibody, rabbit anti-Chicken IgY F(ab') ₂ Antibody Alkaline Phosphatase
Host Species:	Rabbit
Specificity:	IgG F(ab') ₂
Conjugate:	Alkaline Phosphatase (AP)
Clonality:	Polyclonal
Format:	IgG

Target Details

Reactivity:	Chicken
Immunogen:	Chicken IgG F(ab') ₂ fragment

Purity/Specificity:	This product was prepared from monospecific antiserum by immunoaffinity chromatography using Chicken IgG coupled to agarose beads followed by solid phase adsorption(s) to remove any unwanted reactivities. Assay by immunoelectrophoresis resulted in a single precipitin arc against anti-Alkaline Phosphatase (calf intestine), anti-Rabbit Serum, Chicken IgG, Chicken IgG F(ab') ₂ and Chicken Serum. No reaction was observed against Chicken IgG F(c).
----------------------------	---

Application Details

Tested Applications:	Dot Blot, ELISA
Application Note:	Anti-Chicken IgG F(ab') ₂ Alkaline Phosphatase antibody has been tested by ELISA and dot blot and is suitable for immunoblotting (western or dot blot), ELISA, immunoelectron microscopy and immunohistochemistry as well as other antibody based enzymatic assays requiring lot-to-lot consistency.
Assay Dilutions:	All assays should be optimized by the user. Recommended dilutions (if any) may be listed below.
ELISA:	1:3,500
IHC:	1:200 - 1:1,000
WB:	1:500 - 1:2,500

Formulation

Physical State:	Liquid (sterile filtered)
Concentration:	1.0 mg/mL by UV absorbance at 280 nm
Buffer:	0.05 M Tris Chloride, 0.15M Sodium Chloride, 0.001M Magnesium Chloride, 0.0001M Zinc Chloride, 50% (v/v) Glycerol; pH 8.0
Preservative:	0.01% (w/v) Sodium Azide
Stabilizer:	10 mg/mL Bovine Serum Albumin (BSA) - Immunoglobulin and Protease free

Shipping & Handling

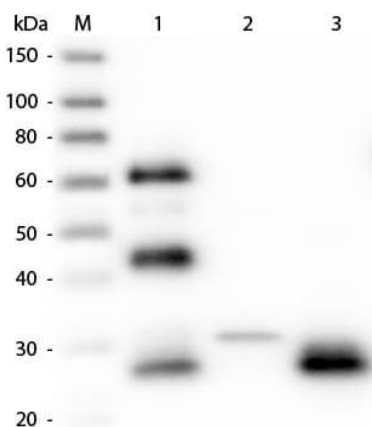
Shipping Condition:	Wet Ice
Storage Condition:	Store vial at 4° C before opening. DO NOT FREEZE. This product is stable at 4° C as an undiluted liquid. Dilute only prior to immediate use. Freezing alkaline phosphatase conjugates will result in a substantial loss of enzymatic activity.
Expiration:	Expiration date is one (1) year from date of receipt.

Images



Dot Blot

Dot Blot of Rabbit anti-Chicken IgG F(ab')₂ Antibody Alkaline Phosphatase Conjugated. Antigen: Chicken IgG (p/n 003-0102). Load: Lane 1 - 200 ng Lane 2 - 66.7 ng Lane 3 - 22.2 ng Lane 4 - 7.41 ng Lane 5 - 2.47 ng. Primary antibody: n/a. Secondary antibody: Rabbit anti-Chicken IgG/IgY F(ab')₂ Antibody Alkaline Phosphatase Conjugated at 1:1,000 for 1 hr at RT. Block: MB-070 for 1 hr at RT.



Western Blot

Western Blot of Unconjugated Anti-Chicken IgG F(ab')₂ (RABBIT) Antibody (p/n 603-4104). Lane M: 3 µl Molecular Ladder. Lane 1: Chicken IgG whole molecule (p/n 003-0102). Lane 2: Chicken IgG F(c) Fragment (p/n 003-0103). Lane 3: Chicken IgG F(ab) Fragment (p/n 003-0105). All samples were reduced. Load: 50 ng per lane. Block: MB-070 for 30 min at RT. Primary Antibody: Anti-Chicken IgG F(ab')₂ (RABBIT) Antibody (p/n 603-4104) 1:5,000 for 60 min at RT. Secondary antibody: Anti-Rabbit IgG (GOAT) Peroxidase Conjugated Antibody (p/n 611-103-122) 1:40,000 in MB-070 for 30 min at RT. Predicted/Observed Size: 25 and 72 kDa for Chicken IgY, 25 kDa for F(c) and F(ab). Chicken F(c) migrates slightly higher.

Disclaimer

This product is for research use only and is not intended for therapeutic or diagnostic applications. Please contact a technical service representative for more information. All products of animal origin manufactured by Rockland Immunochemicals are derived from starting materials of North American origin. Collection was performed in United States Department of Agriculture (USDA) inspected facilities and all materials have been inspected and certified to be free of disease and suitable for exportation. All properties listed are typical characteristics and are not specifications. All suggestions and data are offered in good faith but without guarantee as conditions and methods of use of our products are beyond our control. All claims must be made within 30 days following the date of delivery. The prospective user must determine the suitability of our materials before adopting them on a commercial scale. Suggested uses of our products are not recommendations to use our products in violation of any patent or as a license under any patent of Rockland Immunochemicals, Inc. If you require a commercial license to use this material and do not have one, then return this material, unopened to: Rockland Inc., P.O. BOX 5199, Limerick, Pennsylvania, USA.