



SZABO SCANDIC

Part of Europa Biosite

Produktinformation



Forschungsprodukte & Biochemikalien



Zellkultur & Verbrauchsmaterial



Diagnostik & molekulare Diagnostik



Laborgeräte & Service

Weitere Information auf den folgenden Seiten!
See the following pages for more information!



Lieferung & Zahlungsart

siehe unsere [Liefer- und Versandbedingungen](#)

Zuschläge

- Mindermengenzuschlag
- Trockeneiszuschlag
- Gefahrgutzuschlag
- Expressversand

SZABO-SCANDIC HandelsgmbH

Quellenstraße 110, A-1100 Wien

T. +43(0)1 489 3961-0

F. +43(0)1 489 3961-7

mail@szabo-scandic.com

www.szabo-scandic.com

[linkedin.com/company/szaboscandic](https://www.linkedin.com/company/szaboscandic) 

Datasheet for 603-701-C37**Chicken IgG (H&L) Antibody Pre-Adsorbed****Overview**

Description:	Donkey Anti-Chicken IgG (H&L) Antibody (Min X Bv Gt GP Ham Hs Hu Ms Rb Rt & Sh Serum Proteins) - 603-701-C37
Item No.:	603-701-C37
Size:	1 mg
Applications:	ELISA, WB
Reactivity:	Chicken
Host Species:	Donkey

Product Details

Background:	Anti-Chicken IgG Antibody generated in donkey detects chicken IgY. Secreted as part of the adaptive immune response by plasma B cells, immunoglobulin G constitutes 75% of serum immunoglobulins. Immunoglobulin G binds to viruses, bacteria, as well as fungi and facilitates their destruction or neutralization via agglutination (and thereby immobilizing them), activation of the complement cascade, and opsonization for phagocytosis. The whole IgG molecule possesses both the F(c) region, recognized by high-affinity Fc receptor proteins, as well as the F(ab) region possessing the epitope-recognition site. Both heavy and light chains of the antibody molecule are present.
Synonyms:	Donkey anti-Chicken IgG Antibody, Donkey anti-Chicken IgG Pre-adsorbed Antibody, Donkey anti-Chicken IgY Antibody, Donkey anti-Chicken IgY Pre-adsorbed Antibody
Host Species:	Donkey
Specificity:	IgG (H&L)
Clonality:	Polyclonal
Format:	IgG

Target Details

Reactivity:	Chicken
Immunogen:	Chicken IgG whole molecule

Purity/Specificity:	Anti-Chicken IgG was prepared from monospecific antiserum by immunoaffinity chromatography using Chicken IgG coupled to agarose beads and extensive dialysis against the buffer stated above. Assay by immunoelectrophoresis resulted in a single precipitin arc against anti-Donkey Serum, Chicken IgG and Chicken Serum. No reaction was observed against Bovine, Goat, Guinea Pig, Hamster, Horse, Human, Mouse, Rabbit, Rat and Sheep Serum Proteins. This antibody will react with heavy chains of Chicken IgG and with light chains of most Chicken immunoglobulins.
----------------------------	--

Application Details

Tested Applications:	ELISA, WB
Application Note:	Anti-Chicken IgG (H&L) has been tested by ELISA and western blot and is suitable for use in immunoelectrophoresis, western-blot, competitive western-blot, ELISA and competitive ELISA assays. Specific conditions for reactivity and signal detection should be optimized by the end user.
Assay Dilutions:	All assays should be optimized by the user. Recommended dilutions (if any) may be listed below.
ELISA:	1:20,000 - 1:100,000
IHC:	1:1,000 - 1:5,000
WB:	1:2,000 - 1:10,000

Formulation

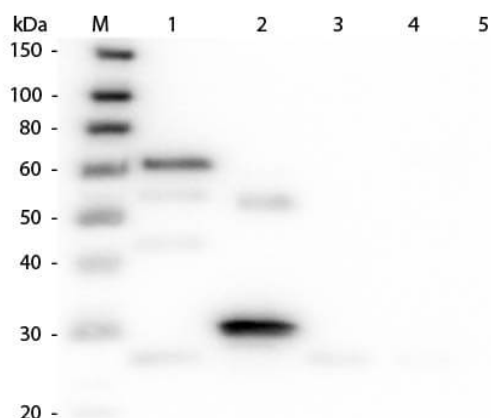
Physical State:	Liquid (sterile filtered)
Concentration:	1.2 by UV absorbance at 280 nm
Buffer:	0.02 M Potassium Phosphate, 0.15 M Sodium Chloride, pH 7.2
Preservative:	None
Stabilizer:	None

Shipping & Handling

Shipping Condition:	Dry Ice
Storage Condition:	Store vial at -20° C prior to opening. Aliquot contents and freeze at -20° C or below for extended storage. Avoid cycles of freezing and thawing. Centrifuge product if not completely clear after standing at room temperature. This product is stable for several weeks at 4° C as an undiluted liquid. Dilute only prior to immediate use.

Expiration: Expiration date is one (1) year from date of receipt.

Images

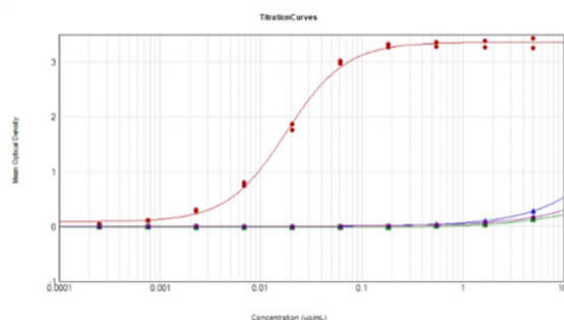


Western Blot

Western Blot of Unconjugated Anti-Chicken IgG (H&L) (DONKEY) Antibody (Min X Bv Gt GP Ham Hs Hu Ms Rb Rt & Sh Serum Proteins) (p/n 603-701-C37). Lane M: 3 μ l Molecular Ladder. Lane 1: Chicken IgG whole molecule (p/n 003-0102). Lane 2: Chicken IgG F(c) Fragment (p/n 003-0103). Lane 3: Chicken IgG Fab Fragment (p/n 003-0105). Lane 4: Chicken IgM Whole Molecule (p/n 003-0107). Lane 5: Chicken Serum (p/n D302-05). All samples were reduced. Load: 50 ng per lane. Block: MB-070 for 30 min at RT. Primary Antibody: Anti-Chicken IgG (H&L) (DONKEY) Antibody (Min X Bv Gt GP Ham Hs Hu Ms Rb Rt & Sh Serum Proteins) (p/n 603-701-C37) 1:3,000 for 60 min at RT. Secondary antibody: Anti-Donkey IgG (GOAT) Peroxidase Conjugated Antibody (p/n 616-1302) 1:40,000 in MB-070 for 30 min at RT. Predicted/Observed Size: 25 and 72 kDa for Chicken IgY and Serum, 25 kDa for F(c) and Fab, 75 kDa for IgM. Chicken F(c) migrates slightly higher.

ELISA

ELISA Results of Purified Donkey Anti-Chicken IgG mx10 Antibody tested against purified Chicken IgG (MX Bv, Gt, Gp, Ham, Hs, Hu, Ms, Rb, Rt, Sh). Each well was coated in duplicate with 10 μ g of Chicken IgG/IgY (p/n 003-0102) [Red Line], Bovine IgG (p/n 001-0102) [Green Line], Goat IgG (005-0102) [Blue Line], Guinea Pig (p/n 006-0102) [Purple Line], not shown Hamster IgG (p/n 007-0102), Horse IgG (p/n 008-0102), Human IgG (p/n 009-0102), Mouse IgG (p/n 010-0102), Rabbit IgG (p/n 011-0102), Rat IgG (p/n 012-0102), and Sheep IgG (p/n 013-0102). The working dilution is 1:56,000. The starting dilution of antibody was 5 μ g/ml and the X-axis represents the Log10 of a 3-fold dilution. This titration is a 4-parameter curve fit where the IC50 is defined as the titer of the antibody. Assay performed using 3% Fish Gel/PBS Blocking buffer (p/n MB-066), HRP Conjugate Stabilizer (p/n MB-076), Goat Anti-Donkey IgG HRP conjugated (p/n 616-1302) and TMB substrate (p/n TMBE-1000).



Disclaimer

This product is for research use only and is not intended for therapeutic or diagnostic applications. Please contact a technical service representative for more information. All products of animal origin manufactured by Rockland Immunochemicals are derived from starting materials of North American origin. Collection was performed in United States Department of Agriculture (USDA) inspected facilities and all materials have been inspected and certified to be free of disease and suitable for exportation. All properties listed are typical characteristics and are not specifications. All suggestions and data are offered in good faith but without guarantee as conditions and methods of use of our products are beyond our control. All claims must be made within 30 days following the date of delivery. The prospective user must determine the suitability of our materials before adopting them on a commercial scale. Suggested uses of our products are not recommendations to use our products in violation of any patent or as a license under any patent of Rockland Immunochemicals, Inc. If you require a commercial license to use this material and do not have one, then return this material, unopened to: Rockland Inc., P.O. BOX 5199, Limerick, Pennsylvania, USA.