



SZABO SCANDIC

Part of Europa Biosite

Produktinformation



Forschungsprodukte & Biochemikalien



Zellkultur & Verbrauchsmaterial



Diagnostik & molekulare Diagnostik



Laborgeräte & Service

Weitere Information auf den folgenden Seiten!
See the following pages for more information!



Lieferung & Zahlungsart

siehe unsere [Liefer- und Versandbedingungen](#)

Zuschläge

- Mindermengenzuschlag
- Trockeneiszuschlag
- Gefahrgutzuschlag
- Expressversand

SZABO-SCANDIC Handels GmbH

Quellenstraße 110, A-1100 Wien

T. +43(0)1 489 3961-0

F. +43(0)1 489 3961-7

mail@szabo-scandic.com

www.szabo-scandic.com

[linkedin.com/company/szaboscandic](https://www.linkedin.com/company/szaboscandic)



Datasheet for 605-4102**Goat IgG (H&L) Secondary Antibody****Overview**

Description:	Rabbit Anti-Goat IgG (H&L) Antibody - 605-4102
Item No.:	605-4102
Size:	2 mg
Applications:	ELISA, IHC, LFA
Reactivity:	Goat
Host Species:	Rabbit

Product Details

Background:	Secondary Antibodies are available in a variety of formats and conjugate types. When choosing a secondary antibody product, consideration must be given to species and immunoglobulin specificity, conjugate type, fragment and chain specificity, level of cross-reactivity, and host-species source and fragment composition.
Synonyms:	rabbit anti-GOAT IgG Antibody, rabbit anti goat IgG
Host Species:	Rabbit
Specificity:	IgG (H&L)
Clonality:	Polyclonal
Format:	IgG

Target Details

Reactivity:	Goat
Immunogen:	Goat IgG whole molecule
Purity/Specificity:	Secondary Antibody was prepared from monospecific antiserum by immunoaffinity chromatography using Goat IgG coupled to agarose beads. Assay by immunoelectrophoresis resulted in a single precipitin arc against anti-Rabbit Serum, Goat IgG and Goat Serum.

Application Details

Tested Applications:	ELISA
Suggested Applications:	IHC, LFA (Based on references)
Application Note:	Anti-Goat IgG antibody has been tested by ELISA and western blot, and is suitable for immunohistochemistry, as well as other assays requiring lot-to-lot consistency.
Assay Dilutions:	All assays should be optimized by the user. Recommended dilutions (if any) may be listed below.
ELISA:	1:50,000 - 1:100,000
IHC:	1:1,000 - 1:5,000
WB:	1:10,000 - 1:60,000

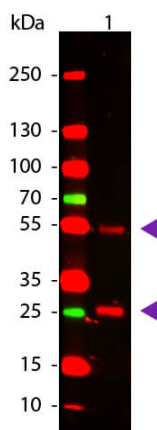
Formulation

Physical State:	Liquid (sterile filtered)
Concentration:	2.1 mg/mL by UV absorbance at 280 nm
Buffer:	0.02 M Potassium Phosphate, 0.15 M Sodium Chloride, pH 7.2
Preservative:	0.01% (w/v) Sodium Azide
Stabilizer:	None

Shipping & Handling

Shipping Condition:	Wet Ice
Storage Condition:	Store vial at 4° C prior to opening. This product is stable for several weeks at 4° C as an undiluted liquid. Dilute only prior to immediate use. For extended storage aliquot contents and freeze at -20° C or below. Avoid cycles of freezing and thawing.
Expiration:	Expiration date is one (1) year from date of receipt.

Images



Western Blot

Western Blot of Rabbit anti-Goat IgG Antibody. Lane 1:
 Goat IgG (p/n 005-0102). Load: 50 ng per lane. Primary
 antibody: Goat antibody at 1:1,000 overnight at 4°C.
 Secondary antibody: DyLight™ 649 rabbit secondary
 antibody at 1:20,000 for 30 min at RT. Block: MB-070 for 30
 min at RT. Predicted/Observed size: 28 & 55 kDa, 28 & 55
 kDa for Goat IgG. Other band(s): None

References

- C Berthonneche et al. New insights into the pathological role of TNF-alpha in early cardiac dysfunction and subsequent heart failure after infarction in rats. *Am J Physiol Heart Circ Physiol.* (2004)
- Sungsu Park et al. Modified immunoliposome sandwich assay for the detection of Escherichia coli O157:H7 in apple cider. *J Food Prot.* (2004)

Disclaimer

This product is for research use only and is not intended for therapeutic or diagnostic applications. Please contact a technical service representative for more information. All products of animal origin manufactured by Rockland Immunochemicals are derived from starting materials of North American origin. Collection was performed in United States Department of Agriculture (USDA) inspected facilities and all materials have been inspected and certified to be free of disease and suitable for exportation. All properties listed are typical characteristics and are not specifications. All suggestions and data are offered in good faith but without guarantee as conditions and methods of use of our products are beyond our control. All claims must be made within 30 days following the date of delivery. The prospective user must determine the suitability of our materials before adopting them on a commercial scale. Suggested uses of our products are not recommendations to use our products in violation of any patent or as a license under any patent of Rockland Immunochemicals, Inc. If you require a commercial license to use this material and do not have one, then return this material, unopened to: Rockland Inc., P.O. BOX 5199, Limerick, Pennsylvania, USA.