



# SZABO SCANDIC

Part of Europa Biosite

## Produktinformation



Forschungsprodukte & Biochemikalien



Zellkultur & Verbrauchsmaterial



Diagnostik & molekulare Diagnostik



Laborgeräte & Service

Weitere Information auf den folgenden Seiten!  
See the following pages for more information!



### Lieferung & Zahlungsart

siehe unsere [Liefer- und Versandbedingungen](#)

### Zuschläge

- Mindermengenzuschlag
- Trockeneiszuschlag
- Gefahrgutzuschlag
- Expressversand

### SZABO-SCANDIC Handels GmbH

Quellenstraße 110, A-1100 Wien

T. +43(0)1 489 3961-0

F. +43(0)1 489 3961-7

[mail@szabo-scandic.com](mailto:mail@szabo-scandic.com)

[www.szabo-scandic.com](http://www.szabo-scandic.com)

[linkedin.com/company/szaboscandic](https://www.linkedin.com/company/szaboscandic) 

## Datasheet for 605-4502

## GOAT IgG (H&L) Secondary Antibody Alkaline Phosphatase Conjugated

### Overview

<b>Description:</b>	Rabbit Anti-Goat IgG (H&L) Antibody Alkaline Phosphatase Conjugated - 605-4502
<b>Item No.:</b>	605-4502
<b>Size:</b>	1 mg
<b>Applications:</b>	Dot Blot, ELISA, WB
<b>Reactivity:</b>	Goat
<b>Host Species:</b>	Rabbit

### Product Details

<b>Background:</b>	Secondary Antibodies are available in a variety of formats and conjugate types. When choosing a secondary antibody product, consideration must be given to species and immunoglobulin specificity, conjugate type, fragment and chain specificity, level of cross-reactivity, and host-species source and fragment composition.
<b>Synonyms:</b>	rabbit anti-Goat IgG Alkaline Phosphatase Conjugated Antibody, rabbit anti-Goat IgG Antibody alk phos Conjugation
<b>Host Species:</b>	Rabbit
<b>Specificity:</b>	IgG (H&L)
<b>Conjugate:</b>	Alkaline Phosphatase (AP)
<b>Clonality:</b>	Polyclonal
<b>Format:</b>	IgG

### Target Details

<b>Reactivity:</b>	Goat
<b>Immunogen:</b>	Goat IgG whole molecule

<b>Purity/Specificity:</b>	Anti-Goat Secondary Antibody was prepared from monospecific antiserum by immunoaffinity chromatography using Goat IgG coupled to agarose beads followed by solid phase adsorption(s) to remove any unwanted reactivities. Assay by immunoelectrophoresis resulted in a single precipitin arc against anti-Alkaline Phosphatase (calf intestine), anti-Rabbit Serum, Goat IgG and Goat Serum.
----------------------------	--

## Application Details

<b>Tested Applications:</b>	Dot Blot, ELISA, WB
<b>Application Note:</b>	Anti-Goat IgG Alkaline Phosphatase conjugate has been tested by ELISA, dot blot, and western blot and is suitable for immunoelectron microscopy and immunohistochemistry as well as other antibody-based enzymatic assays requiring lot-to-lot consistency.
<b>Assay Dilutions:</b>	All assays should be optimized by the user. Recommended dilutions (if any) may be listed below.
<b>ELISA:</b>	1:2,000 - 1:13,000
<b>IHC:</b>	1:200 - 1:1,000
<b>WB:</b>	1:500 - 1:2,500

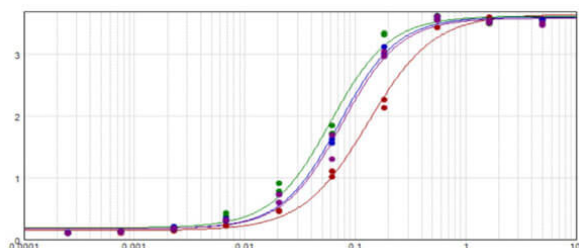
## Formulation

<b>Physical State:</b>	Liquid (sterile filtered)
<b>Concentration:</b>	1.0 mg/mL by UV absorbance at 280 nm
<b>Buffer:</b>	0.05 M Tris Chloride, 0.15M Sodium Chloride, 0.001M Magnesium Chloride, 0.0001M Zinc Chloride, 50% (v/v) Glycerol; pH 8.0
<b>Preservative:</b>	0.09% (w/v) Sodium Azide
<b>Stabilizer:</b>	10 mg/mL Bovine Serum Albumin (BSA) - Immunoglobulin and Protease free

## Shipping & Handling

<b>Shipping Condition:</b>	Wet Ice
<b>Storage Condition:</b>	Store secondary antibody at 4° C before opening. DO NOT FREEZE. Anti-Goat secondary antibodies are stable at 4° C as an undiluted liquid. Dilute only prior to immediate use. Freezing alkaline phosphatase conjugates will result in a substantial loss of enzymatic activity.
<b>Expiration:</b>	Expiration date is one (1) year from date of receipt.

## Images



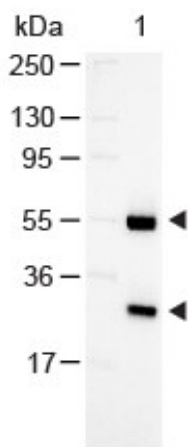
### ELISA

ELISA results of purified Rabbit Anti-Goat IgG Alkaline Phosphatase Conjugated Antibody tested against purified Goat IgG. (Green Line). Each well was coated in duplicate with 1.0  $\mu$ g of antigen. The starting dilution of antibody was 5 $\mu$ g/ml and the X-axis represents the Log10 of a 3-fold dilution. This titration is a 4-parameter curve fit where the IC50 is defined as the titer of the antibody. Assay performed using Blocking buffer (p/n MB-060-1000) and TMB substrate (p/n TMBE-1000).



### Dot Blot

Dot Blot of Goat IgG (H&L) Secondary Antibody Alkaline Phosphatase Conjugated Antigen: Goat IgG Load: Lane 1 - 200ng Lane 2 - 66.7ng Lane 3 - 22.2ng Lane 4 - 7.4ng Lane 5 - 2.5ng Primary antibody: none Secondary antibody: Goat IgG (H&L) Secondary Antibody Alkaline Phosphatase Conjugated at 1:1,000 for 60 min at RT. Detected using Alkaline Phosphatase Substrate. Block: MB-070 60 min at RT.



### Western Blot

Western Blot of Rabbit anti-Goat Antibody Alkaline Phosphatase Conjugated Lane 1: Goat IgG Load: 100 ng per lane Secondary antibody: Alkaline Phosphatase Conjugated Rabbit Anti-Goat Antibody at 1:1000 for 60 min at RT Block: MB-070 30 min RT Predicted/Observed size: 55 and 28 kDa, 55 and 28 kDa

## Disclaimer

This product is for research use only and is not intended for therapeutic or diagnostic applications. Please contact a technical service representative for more information. All products of animal origin manufactured by Rockland Immunochemicals are derived from starting materials of North American origin. Collection was performed in United States Department of Agriculture (USDA) inspected facilities and all materials have been inspected and certified to be free of disease and suitable for exportation. All properties listed are typical characteristics and are not specifications. All suggestions and data are offered in good faith but without guarantee as conditions and methods of use of our products are beyond our control. All claims must be made within 30 days following the date of delivery. The prospective user must determine the suitability of our materials before adopting them on a commercial scale. Suggested uses of our products are not recommendations to use our products in violation of any patent or as a license under any patent of Rockland Immunochemicals, Inc. If you require a commercial license to use this material and do not have one, then return this material, unopened to: Rockland Inc., P.O. BOX 5199, Limerick, Pennsylvania, USA.