



SZABO SCANDIC

Part of Europa Biosite

Produktinformation



Forschungsprodukte & Biochemikalien



Zellkultur & Verbrauchsmaterial



Diagnostik & molekulare Diagnostik



Laborgeräte & Service

Weitere Information auf den folgenden Seiten!
See the following pages for more information!



Lieferung & Zahlungsart

siehe unsere [Liefer- und Versandbedingungen](#)

Zuschläge

- Mindermengenzuschlag
- Trockeneiszuschlag
- Gefahrgutzuschlag
- Expressversand

SZABO-SCANDIC HandelsgmbH

Quellenstraße 110, A-1100 Wien

T. +43(0)1 489 3961-0

F. +43(0)1 489 3961-7

mail@szabo-scandic.com

www.szabo-scandic.com

[linkedin.com/company/szaboscandic](https://www.linkedin.com/company/szaboscandic) 

Datasheet for 605-454-013

Goat IgG (H&L) Antibody ATTO 550 Conjugated Pre-Adsorbed**Overview**

Description:	Rabbit Anti-Goat IgG (H&L) Antibody ATTO 550 Conjugated (Min X Hu, Ms, Rb Serum Proteins) - 605-454-013
Item No.:	605-454-013
Size:	500 µg
Applications:	WB
Reactivity:	Goat
Host Species:	Rabbit

Product Details

Background:	Anti-Goat IgG ATTO dye Antibody generated in rabbit detects goat IgG. Secreted as part of the adaptive immune response by plasma B cells, immunoglobulin G constitutes 75% of serum immunoglobulins. Immunoglobulin G binds to viruses, bacteria, as well as fungi and facilitates their destruction or neutralization via agglutination (and thereby immobilizing them), activation of the compliment cascade, and opsonization for phagocytosis. The whole IgG molecule possesses both the F(c) region, recognized by high-affinity Fc receptor proteins, as well as the F(ab) region possessing the epitope-recognition site. Both heavy and light chains of the antibody molecule are present.
Synonyms:	rabbit anti-Goat IgG ATTO 550 Conjugated Antibody, rabbit anti-Goat IgG Antibody ATTO550 Conjugation
Host Species:	Rabbit
Specificity:	IgG (H&L)
Conjugate:	ATTO 550
Clonality:	Polyclonal
Format:	IgG
F/P Ratio:	1.9

Target Details

Reactivity:	Goat
--------------------	------

Immunogen:	Goat IgG whole molecule
Purity/Specificity:	Goat IgG (H&L) conjugated by ATTO 550 was prepared from monospecific antiserum by immunoaffinity chromatography using Goat IgG coupled to agarose beads followed by solid phase adsorption(s) to remove any unwanted reactivities. Assay by immunoelectrophoresis resulted in a single precipitin arc against anti-Rabbit Serum, Goat IgG and Goat Serum. No reaction was observed against Human, Mouse or Rabbit Serum Proteins. This antibody will react with heavy chains of Goat IgG and with light chains of most Goat immunoglobulins.

Application Details

Tested Applications:	WB
Application Note:	Anti-Goat IgG (H&L) conjugated by ATTO 550 has been tested by Western blot and is designed for STED microscopy, FRET, immunofluorescence microscopy, fluorescence based plate assays (FLISA) and fluorescent western blotting. This product is also suitable for multiplex analysis, including multicolor imaging, utilizing various commercial platforms. The emission spectra for this ATTO conjugate matches the principle output wavelengths of most common fluorescence instrumentation.
Assay Dilutions:	All assays should be optimized by the user. Recommended dilutions (if any) may be listed below.
FLISA:	>1:20,000
IF:	>1:5,000
WB:	>1:10,000

Formulation

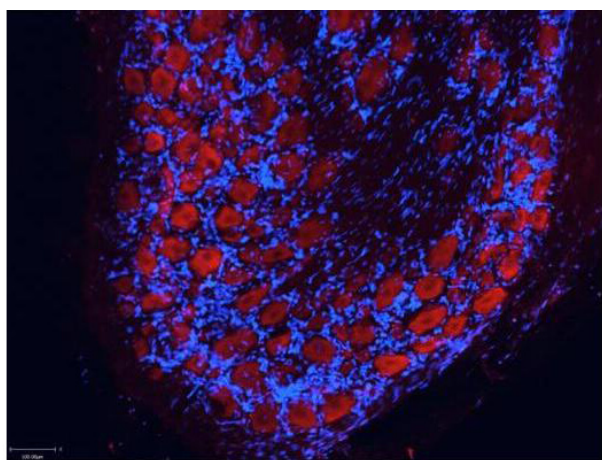
Physical State:	Lyophilized
Concentration:	1.0 mg/mL by UV absorbance at 280 nm
Buffer:	0.02 M Potassium Phosphate, 0.15 M Sodium Chloride, pH 7.2
Preservative:	0.01% (w/v) Sodium Azide
Stabilizer:	10 mg/mL Bovine Serum Albumin (BSA) - Immunoglobulin and Protease free
Reconstitution Volume:	500 µL
Reconstitution Buffer:	Restore with deionized water (or equivalent)

Shipping & Handling

Shipping Condition:	Ambient
----------------------------	---------

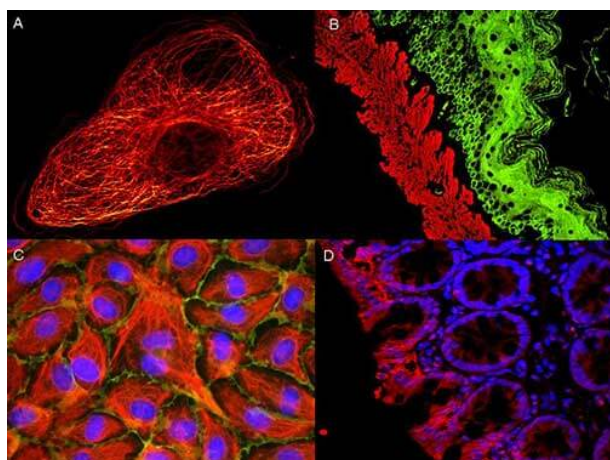
Storage Condition:	Store vial at 4° C prior to restoration. For extended storage aliquot contents and freeze at -20° C or below. Avoid cycles of freezing and thawing. Centrifuge product if not completely clear after standing at room temperature. This product is stable for several weeks at 4° C as an undiluted liquid. Dilute only prior to immediate use.
Expiration:	Expiration date is one (1) year from date of receipt.

Images



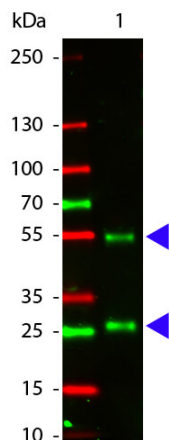
Immunofluorescence Microscopy

Atto™ dyes can be used for multicolor immunofluorescent detection with low background and high signal. Example shown here is Immunohistochemical staining using ATTO-550 Anti-Aquaporin 2-antibody (red) of paraffin embedded region of rat kidney showing a transversal cut of the inner medulla near to the renal papilla. Nuclei are visualized with Hoechst 33342 (blue). Images provided courtesy of Dr. Jörg Reichwein, ATTO-TEC GmbH



Immunofluorescence Microscopy

ATTO® dyes can be used for multicolor immunofluorescent detection with low background and high signal. Examples shown are: A. Tubulin in PtK2- male Rat Kangaroo Kidney Epithelial Cells was detected using ATTO 532 labeled secondary antibody. B. Muscle alpha-actin was stained with a mouse primary antibody and ATTO 488 anti-mouse IgG (green) while Cytokeratin was stained with polyclonal rabbit anti-cytokeratin and ATTO 647N anti-rabbit IgG (red). C. HUVEC (Human umbilical vein endothelial cells) were stained with anti- Vimentin-ATTO 532 (green), anti-E-Cadherin-ATTO 655 (red) and DAPI (blue). D. Rat colon sections were stained with Anti-Aquaporin 3-ATTO 594 antibody. Hoechst 33342 (blue) is used as counterstain. Images provided courtesy of Dr. Jörg Reichwein, ATTO-TEC GmbH



Western Blot

Western Blot of Atto 550 conjugated Rabbit anti-Goat IgG antibody. Lane 1: Goat IgG. Lane 2: none. Load: 50 ng per lane. Primary antibody: none. Secondary antibody: Atto 550 rabbit secondary antibody at 1:1,000 for 60 min at RT. Block: MB-070 for 30 min at RT. Predicted/Observed size: 55 kDa, 28 kDa for Goat IgG. Other band(s): none.

Disclaimer

This product is for research use only and is not intended for therapeutic or diagnostic applications. Please contact a technical service representative for more information. All products of animal origin manufactured by Rockland Immunochemicals are derived from starting materials of North American origin. Collection was performed in United States Department of Agriculture (USDA) inspected facilities and all materials have been inspected and certified to be free of disease and suitable for exportation. All properties listed are typical characteristics and are not specifications. All suggestions and data are offered in good faith but without guarantee as conditions and methods of use of our products are beyond our control. All claims must be made within 30 days following the date of delivery. The prospective user must determine the suitability of our materials before adopting them on a commercial scale. Suggested uses of our products are not recommendations to use our products in violation of any patent or as a license under any patent of Rockland Immunochemicals, Inc. If you require a commercial license to use this material and do not have one, then return this material, unopened to: Rockland Inc., P.O. BOX 5199, Limerick, Pennsylvania, USA.