



SZABO SCANDIC

Part of Europa Biosite

Produktinformation



Forschungsprodukte & Biochemikalien



Zellkultur & Verbrauchsmaterial



Diagnostik & molekulare Diagnostik



Laborgeräte & Service

Weitere Information auf den folgenden Seiten!
See the following pages for more information!



Lieferung & Zahlungsart

siehe unsere [Liefer- und Versandbedingungen](#)

Zuschläge

- Mindermengenzuschlag
- Trockeneiszuschlag
- Gefahrgutzuschlag
- Expressversand

SZABO-SCANDIC Handels GmbH

Quellenstraße 110, A-1100 Wien

T. +43(0)1 489 3961-0

F. +43(0)1 489 3961-7

mail@szabo-scandic.com

www.szabo-scandic.com

[linkedin.com/company/szaboscandic](https://www.linkedin.com/company/szaboscandic)



Datasheet for 609-101-130**Human IgG IgA IgM (H&L) Antibody****Overview**

| | |
|----------------------|--|
| Description: | Goat Anti-Human IgG IgA IgM (H&L) Antibody - 609-101-130 |
| Item No.: | 609-101-130 |
| Size: | 2 mg |
| Applications: | Dot Blot, ELISA |
| Reactivity: | Human |
| Host Species: | Goat |

Product Details

| | |
|----------------------|---|
| Background: | Anti-Human IgG IgA IgM (H&L) Antibody generated in goat detects human (heavy and light chain) immunoglobulin G, A, and M. Immunoglobulin G binds to antigens and can neutralize or opsonize targets, and are predominantly involved in the secondary immune response. Immunoglobulin A (IgA) is an antibody that plays a critical role in mucosal immunity. IgA has two subclasses (IgA1 and IgA2) and can exist in a dimeric form called secretory IgA (sIgA). Immunoglobulin M, or IgM, is a pentamer composed of 5 immunoglobulin molecules linked through their F(c) domain by the J chain. Secondary Antibodies are available in a variety of formats and conjugate types. When choosing a secondary antibody product, consideration must be given to species and immunoglobulin specificity, conjugate type, fragment and chain specificity, level of cross-reactivity, and host-species source and fragment composition. |
| Synonyms: | Goat anti Human IgG IgA IgM Antibody, Goat Anti-Human IgG IgA IgM Antibody, Goat Anti-Human IgGAM |
| Host Species: | Goat |
| Specificity: | IgG IgA IgM |
| Clonality: | Polyclonal |
| Format: | IgG |

Target Details

| | |
|--------------------|--|
| Reactivity: | Human |
| Immunogen: | Human IgG, IgA and IgM whole molecules |

| | |
|----------------------------|---|
| Purity/Specificity: | This product was prepared from polyspecific antiserum by immunoaffinity chromatography using antigens coupled to agarose beads followed by solid phase adsorption(s) to remove any unwanted reactivities. Assay by immunoelectrophoresis resulted in a single precipitin arc against anti-Goat Serum, Human IgG, Human IgA and Human IgM. This reagent is suitable for the detection of all Human immunoglobulin subclasses and chain combinations. |
|----------------------------|---|

Application Details

| | |
|-----------------------------|--|
| Tested Applications: | Dot Blot, ELISA |
| Application Note: | Anti-Human IgG IgA IgM antibody has been tested by ELISA and dot blot and is suitable for western blot and immunohistochemistry, as well as other assays requiring lot-to-lot consistency. |
| Assay Dilutions: | All assays should be optimized by the user. Recommended dilutions (if any) may be listed below. |
| ELISA: | 1:28,800 - 1:48,800 |
| IHC: | 1:1,000 - 1:5,000 |
| WB: | 1:2,000 - 1:10,000 |

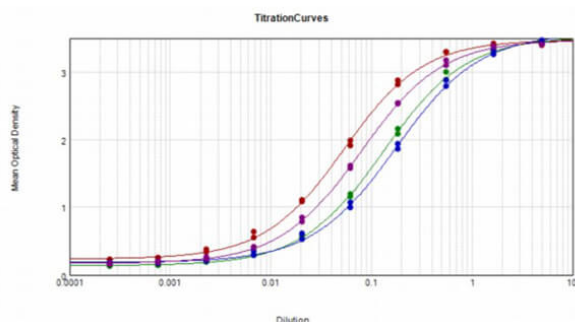
Formulation

| | |
|------------------------|--|
| Physical State: | Liquid (sterile filtered) |
| Concentration: | 2.0 mg/mL by UV absorbance at 280 nm |
| Buffer: | 0.02 M Potassium Phosphate, 0.15 M Sodium Chloride, pH 7.2 |
| Preservative: | 0.01% (w/v) Sodium Azide |
| Stabilizer: | None |

Shipping & Handling

| | |
|----------------------------|--|
| Shipping Condition: | Wet Ice |
| Storage Condition: | Store vial at 4° C prior to opening. This product is stable for several weeks at 4° C as an undiluted liquid. Dilute only prior to immediate use. For extended storage aliquot contents and freeze at -20° C or below. Avoid cycles of freezing and thawing. |
| Expiration: | Expiration date is one (1) year from date of receipt. |

Images



ELISA

ELISA Results of purified Goat Anti-Human IgG, IgA, IgM Antibody tested against purified Human IgG, IgA, IgM. The working dilution for Anti-Human IgG, IgA, IgM is 1:20,000. Each well was coated in duplicate with 1.0 µg of Human IgG protein [Red Line], Human IgA [Green Line], Human IgM [Blue Line], Human IgG/A/M [Purple Line]. The starting dilution of antibody was 5µg/ml and the X-axis represents the Log10 of a 3-fold dilution. This titration is a 4-parameter curve fit where the IC50 is defined as the titer of the antibody. Assay performed using Donkey Anti-Goat IgG HRP conjugated and TMBE-1000 substrate.

References

- Akindele NP et al. B-Cell Responses in Hospitalized Severe Acute Respiratory Syndrome Coronavirus 2–Infected Children With and Without Multisystem Inflammatory Syndrome. *J Infect Dis.* (2022)
- Cho A et al. Single-cell analysis suggests that ongoing affinity maturation drives the emergence of pemphigus vulgaris autoimmune disease. *Cell Rep.* (2019)

Disclaimer

This product is for research use only and is not intended for therapeutic or diagnostic applications. Please contact a technical service representative for more information. All products of animal origin manufactured by Rockland Immunochemicals are derived from starting materials of North American origin. Collection was performed in United States Department of Agriculture (USDA) inspected facilities and all materials have been inspected and certified to be free of disease and suitable for exportation. All properties listed are typical characteristics and are not specifications. All suggestions and data are offered in good faith but without guarantee as conditions and methods of use of our products are beyond our control. All claims must be made within 30 days following the date of delivery. The prospective user must determine the suitability of our materials before adopting them on a commercial scale. Suggested uses of our products are not recommendations to use our products in violation of any patent or as a license under any patent of Rockland Immunochemicals, Inc. If you require a commercial license to use this material and do not have one, then return this material, unopened to: Rockland Inc., P.O. BOX 5199, Limerick, Pennsylvania, USA.