



SZABO SCANDIC

Part of Europa Biosite

Produktinformation



Forschungsprodukte & Biochemikalien



Zellkultur & Verbrauchsmaterial



Diagnostik & molekulare Diagnostik



Laborgeräte & Service

Weitere Information auf den folgenden Seiten!
See the following pages for more information!



Lieferung & Zahlungsart

siehe unsere [Liefer- und Versandbedingungen](#)

Zuschläge

- Mindermengenzuschlag
- Trockeneiszuschlag
- Gefahrgutzuschlag
- Expressversand

SZABO-SCANDIC HandelsgmbH

Quellenstraße 110, A-1100 Wien

T. +43(0)1 489 3961-0

F. +43(0)1 489 3961-7

mail@szabo-scandic.com

www.szabo-scandic.com

[linkedin.com/company/szaboscandic](https://www.linkedin.com/company/szaboscandic) 

Datasheet for 609-105-130**Human IgG IgA IgM (H&L) Antibody Alkaline Phosphatase Conjugated****Overview**

Description:	Goat Anti-Human IgG IgA IgM (H&L) Antibody Alkaline Phosphatase Conjugated - 609-105-130
Item No.:	609-105-130
Size:	1 mg
Applications:	Dot Blot, ELISA, WB
Reactivity:	Human
Host Species:	Goat

Product Details

Background:	Anti-Human IgG IgA IgM (H&L) Alkaline Phosphatase Antibody generated in goat detects human (heavy and light chain) immunoglobulin G, A, and M. Immunoglobulin G binds to antigens and can neutralize or opsonize targets, and are predominantly involved in the secondary immune response. Immunoglobulin A (IgA) is an antibody that plays a critical role in mucosal immunity. IgA has two subclasses (IgA1 and IgA2) and can exist in a dimeric form called secretory IgA (sIgA). Immunoglobulin M, or IgM, is a pentamer composed of 5 immunoglobulin molecules linked through their F(c) domain by the J chain. Secondary Antibodies are available in a variety of formats and conjugate types. When choosing a secondary antibody product, consideration must be given to species and immunoglobulin specificity, conjugate type, fragment and chain specificity, level of cross-reactivity, and host-species source and fragment composition.
Synonyms:	Goat Anti-Human IgG IgA IgM Antibody alkaline phosphatase Conjugated, Goat Anti-Human IgG IgA IgM Antibody alk phos Conjugated, Goat Anti-Human IgGAM Antibody ALP Conjugated
Host Species:	Goat
Specificity:	IgG IgA IgM
Conjugate:	Alkaline Phosphatase (AP)
Clonality:	Polyclonal
Format:	IgG

Target Details

Reactivity:	Human
--------------------	-------

Immunogen:	Human IgG, IgA and IgM whole molecule
Purity/Specificity:	This product was prepared from monospecific antiserum by immunoaffinity chromatography using Human antigens coupled to agarose beads followed by solid phase adsorption(s) to remove any unwanted reactivities. Assay by immunoelectrophoresis resulted in a single precipitin arc against anti-Alkaline Phosphatase (calf intestine) and anti-Goat Serum. This reagent is suitable for the detection of all human immunoglobulin isotypes, subclasses and chain combinations.

Application Details

Tested Applications:	Dot Blot, ELISA, WB
Application Note:	Anti-Human IgG IgA IgM Alkaline Phosphatase conjugate has been tested by ELISA, dot blot, and western blot and is suitable for immunoblotting (western or dot blot), ELISA, immunoelectron microscopy and immunohistochemistry as well as other antibody-based enzymatic assays requiring lot-to-lot consistency.
Assay Dilutions:	All assays should be optimized by the user. Recommended dilutions (if any) may be listed below.
ELISA:	1:2,000 - 1:10,000
IHC:	1:200 - 1:1,000
WB:	1:500 - 1:3,000

Formulation

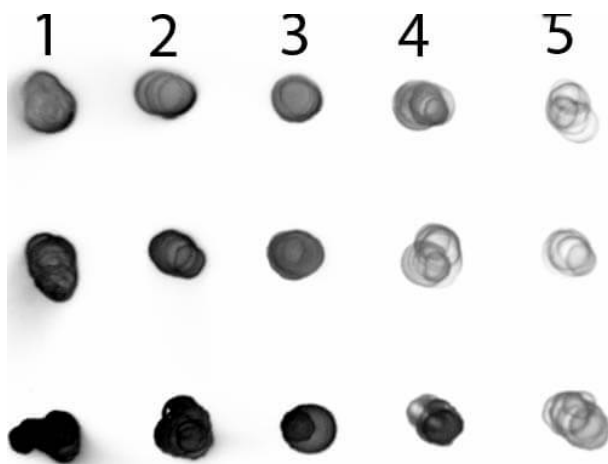
Physical State:	Liquid (sterile filtered)
Concentration:	1.0 mg/mL by UV absorbance at 280 nm
Buffer:	0.05 M Tris Chloride, 0.15M Sodium Chloride, 0.001M Magnesium Chloride, 0.0001M Zinc Chloride, 50% (v/v) Glycerol; pH 8.0
Preservative:	0.1% (w/v) Sodium Azide
Stabilizer:	10 mg/mL Bovine Serum Albumin (BSA) - Immunoglobulin and Protease free

Shipping & Handling

Shipping Condition:	Wet Ice
Storage Condition:	Store vial at 4° C before opening. DO NOT FREEZE. This product is stable at 4° C as an undiluted liquid. Dilute only prior to immediate use. Freezing alkaline phosphatase conjugates will result in a substantial loss of enzymatic activity.

Expiration:

Expiration date is one (1) year from date of receipt.

Images**Dot Blot**

Dot Blot of Goat anti-Human IgG IgA IgM Antibody Alkaline Phosphatase Conjugated. Antigen: Row 1 - Human IgG Row 2 - Human IgA Row 3 - Human IgM. Load: Lane 1 - 200 ng Lane 2 - 66.7 ng Lane 3 - 22.2 ng Lane 4 - 7.41 ng Lane 5 - 2.47 ng. Primary antibody: n/a. Secondary antibody: Goat anti-Human IgG IgA IgM Antibody Alkaline Phosphatase Conjugated at 1:1,000 for 1 HR at RT. Block: MB-070 for 1 HR at RT.

Disclaimer

This product is for research use only and is not intended for therapeutic or diagnostic applications. Please contact a technical service representative for more information. All products of animal origin manufactured by Rockland Immunochemicals are derived from starting materials of North American origin. Collection was performed in United States Department of Agriculture (USDA) inspected facilities and all materials have been inspected and certified to be free of disease and suitable for exportation. All properties listed are typical characteristics and are not specifications. All suggestions and data are offered in good faith but without guarantee as conditions and methods of use of our products are beyond our control. All claims must be made within 30 days following the date of delivery. The prospective user must determine the suitability of our materials before adopting them on a commercial scale. Suggested uses of our products are not recommendations to use our products in violation of any patent or as a license under any patent of Rockland Immunochemicals, Inc. If you require a commercial license to use this material and do not have one, then return this material, unopened to: Rockland Inc., P.O. BOX 5199, Limerick, Pennsylvania, USA.