



SZABO SCANDIC

Part of Europa Biosite

Produktinformation



Forschungsprodukte & Biochemikalien



Zellkultur & Verbrauchsmaterial



Diagnostik & molekulare Diagnostik



Laborgeräte & Service

Weitere Information auf den folgenden Seiten!
See the following pages for more information!



Lieferung & Zahlungsart

siehe unsere [Liefer- und Versandbedingungen](#)

Zuschläge

- Mindermengenzuschlag
- Trockeneiszuschlag
- Gefahrgutzuschlag
- Expressversand

SZABO-SCANDIC HandelsgmbH

Quellenstraße 110, A-1100 Wien

T. +43(0)1 489 3961-0

F. +43(0)1 489 3961-7

mail@szabo-scandic.com

www.szabo-scandic.com

[linkedin.com/company/szaboscandic](https://www.linkedin.com/company/szaboscandic) 

Datasheet for 609-1111**Human (lambda chain) Antibody****Overview**

Description:	Goat Anti-Human λ (lambda chain) Antibody - 609-1111
Item No.:	609-1111
Size:	1 mg
Applications:	ELISA, WB
Reactivity:	Human
Host Species:	Goat

Product Details

Background:	The anti-Human λ (lambda chain) Antibody detects the lambda chain subunit. Immunoglobulins are heterotetramers composed of 2 immunoglobulin heavy and 2 immunoglobulin light chains. The immunoglobulin light chain is the small polypeptide subunit of an antibody (immunoglobulin). In humans the light chains can be categorized into kappa type or lambda type and both are used to construct the antigen binding F(ab) region of an antibody along with the variable region of the heavy chain.
Synonyms:	goat anti-Human λ (lambda chain) Antibody, goat anti-Human lambda chain Antibody
Host Species:	Goat
Specificity:	λ (lambda chain)
Clonality:	Polyclonal
Format:	IgG

Target Details

Reactivity:	Human
Immunogen Type:	Native Protein
Immunogen:	Anti-Human lambda light chain antibody was produced by repeated immunization with Human lambda light chain molecule in goat.

Purity/Specificity:	This product was prepared from monospecific antiserum by immunoaffinity chromatography using Human IgG coupled to agarose beads followed by solid phase adsorption(s) to remove any unwanted reactivities. Assay by immunoelectrophoresis resulted in a single precipitin arc against anti-Goat Serum. Solid phase adsorption(s) against a panel of Human IgG Kappa, IgM Kappa and IgA Kappa proteins was performed. Specificity was confirmed by ELISA.
----------------------------	--

Relevant Links:	<ul style="list-style-type: none">• 609-1111 SDS
------------------------	--

Application Details

Tested Applications:	ELISA, WB
Application Note:	Anti-Human λ has been tested by ELISA and western blot and is ideal for investigators who routinely perform ELISA, Sandwich ELISA, titration assays, western-blot, immunoprecipitation and more generally immunoassays.
Assay Dilutions:	All assays should be optimized by the user. Recommended dilutions (if any) may be listed below.
ELISA:	1:4,000 - 1:20,000
IHC:	1:1,000 - 1:5,000
WB:	1:500 - 1:2,000

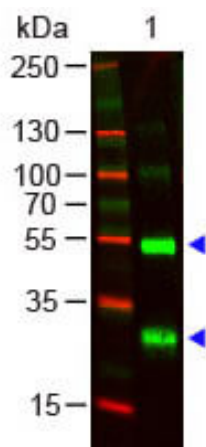
Formulation

Physical State:	Liquid (sterile filtered)
Concentration:	1.0 mg/mL by UV absorbance at 280 nm
Buffer:	0.125 M Sodium Borate, 0.075 M Sodium Chloride, 0.005 M EDTA, pH 8.0
Preservative:	0.1% (w/v) Sodium Azide
Stabilizer:	None

Shipping & Handling

Shipping Condition:	Wet Ice
Storage Condition:	Store vial at 4° C prior to opening. This product is stable for several weeks at 4° C as an undiluted liquid. Dilute only prior to immediate use. For extended storage aliquot contents and freeze at -20° C or below. Avoid cycles of freezing and thawing.
Expiration:	Expiration date is one (1) year from date of receipt.

Images



Western Blot

Western Blot of Goat anti-Human lambda chain Antibody.
Lane 1: Human lambda chain. Lane 2: None. Load: 100 ng per lane. Primary antibody: Human lambda chain Antibody at 1:1000 for overnight at 4°C. Secondary antibody: DyLight800 Donkey anti-Goat at 1:20,000 for 30 min at RT. Block: MB-070 for 30 min at RT. Other Band(s): None.

Disclaimer

This product is for research use only and is not intended for therapeutic or diagnostic applications. Please contact a technical service representative for more information. All products of animal origin manufactured by Rockland Immunochemicals are derived from starting materials of North American origin. Collection was performed in United States Department of Agriculture (USDA) inspected facilities and all materials have been inspected and certified to be free of disease and suitable for exportation. All properties listed are typical characteristics and are not specifications. All suggestions and data are offered in good faith but without guarantee as conditions and methods of use of our products are beyond our control. All claims must be made within 30 days following the date of delivery. The prospective user must determine the suitability of our materials before adopting them on a commercial scale. Suggested uses of our products are not recommendations to use our products in violation of any patent or as a license under any patent of Rockland Immunochemicals, Inc. If you require a commercial license to use this material and do not have one, then return this material, unopened to: Rockland Inc., P.O. BOX 5199, Limerick, Pennsylvania, USA.