



SZABO SCANDIC

Part of Europa Biosite

Produktinformation



Forschungsprodukte & Biochemikalien



Zellkultur & Verbrauchsmaterial



Diagnostik & molekulare Diagnostik



Laborgeräte & Service

Weitere Information auf den folgenden Seiten!
See the following pages for more information!



Lieferung & Zahlungsart

siehe unsere [Liefer- und Versandbedingungen](#)

Zuschläge

- Mindermengenzuschlag
- Trockeneiszuschlag
- Gefahrgutzuschlag
- Expressversand

SZABO-SCANDIC Handels GmbH

Quellenstraße 110, A-1100 Wien

T. +43(0)1 489 3961-0

F. +43(0)1 489 3961-7

mail@szabo-scandic.com

www.szabo-scandic.com

[linkedin.com/company/szaboscandic](https://www.linkedin.com/company/szaboscandic) 

Datasheet for 609-1311**Human (lambda chain) Antibody Peroxidase Conjugated****Overview**

Description:	Goat Anti-Human λ (lambda chain) Antibody Peroxidase Conjugated - 609-1311
Item No.:	609-1311
Size:	1 mg
Applications:	ELISA, WB
Reactivity:	Human
Host Species:	Goat

Product Details

Background:	The anti-Human λ (lambda chain) Antibody detects the lambda chain subunit. Immunoglobulins are heterotetramers composed of 2 immunoglobulin heavy and 2 immunoglobulin light chains. The immunoglobulin light chain is the small polypeptide subunit of an antibody (immunoglobulin). In humans the light chains can be categorized into kappa type or lambda type and both are used to construct the antigen binding F(ab) region of an antibody along with the variable region of the heavy chain. Secondary Antibodies are available in a variety of formats and conjugate types. When choosing a secondary antibody product, consideration must be given to species and immunoglobulin specificity, conjugate type, fragment and chain specificity, level of cross-reactivity, and host-species source and fragment composition. Anti-Human IgG lambda is conjugated to peroxidase.
Synonyms:	goat anti-Human λ (lambda chain) Antibody peroxidase Conjugated, goat anti-Human lambda chain HRP Conjugated Antibody
Host Species:	Goat
Specificity:	λ (lambda chain)
Conjugate:	Peroxidase (HRP)
Clonality:	Polyclonal
Format:	IgG

Target Details

Reactivity:	Human
--------------------	-------

Immunogen Type:	Native Protein
Immunogen:	Anti-Human lambda chain was produced by repeated immunization with human lambda light chain in goat.
Purity/Specificity:	This product was prepared from monospecific antiserum by immunoaffinity chromatography using antigens coupled to agarose beads followed by solid phase adsorption(s) to remove any unwanted reactivities. Assay by immunoelectrophoresis resulted in a single precipitin arc against anti-Peroxidase and anti-Goat Serum. Specificity was confirmed by ELISA minimal cross reactivity against other human heavy or light chain isotypes.

Application Details

Tested Applications:	ELISA, WB
Application Note:	Anti-Human λ (lambda chain) Antibody peroxidase conjugated has been tested by ELISA and western blot and is assayed against 1.0 ug of Human IgG in a standard capture ELISA using ABTS (2,2'-azino-bis-[3-ethylbenthiazoline-6-sulfonic acid]) code # ABTS-100 as a substrate for 30 minutes at room temperature. A working dilution of 1:16,000 to 1:64,000 is suggested for this product. This secondary peroxidase conjugated antibody anti-Human lambda chain is ideal for investigators who routinely perform titration assays, western-blot, immunoprecipitation and more generally immunoassays.
Assay Dilutions:	All assays should be optimized by the user. Recommended dilutions (if any) may be listed below.
ELISA:	1:10,000 - 1:50,000
IHC:	1:500 - 1:2,500
WB:	1:1,000 - 1:10,000

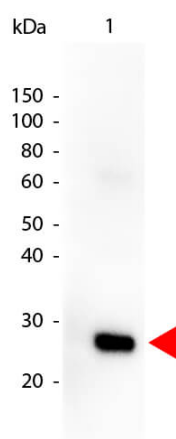
Formulation

Physical State:	Lyophilized
Concentration:	1.0 mg/ml by UV absorbance at 280 nm
Buffer:	0.02 M Potassium Phosphate, 0.15 M Sodium Chloride, pH 7.2
Preservative:	0.01% (w/v) Thimerosal
Stabilizer:	10 mg/mL Bovine Serum Albumin (BSA) - Immunoglobulin and Protease free
Reconstitution Volume:	1.0 mL
Reconstitution Buffer:	Restore with deionized water (or equivalent)

Shipping & Handling

Shipping Condition:	Ambient
Storage Condition:	Store vial at 4° C prior to restoration. For extended storage aliquot contents and freeze at -20° C or below. Avoid cycles of freezing and thawing. Centrifuge product if not completely clear after standing at room temperature. This product is stable for several weeks at 4° C as an undiluted liquid. Dilute only prior to immediate use.
Expiration:	Expiration date is one (1) year from date of receipt.

Images



Western Blot

Western Blot of Goat anti-HUMAN λ (lambda chain)
 Peroxidase Conjugated antibody. Lane 1: Human Lambda.
 Lane 2: None. Load: 50 ng per lane. Primary Antibody:
 None. Secondary antibody: Peroxidase goat secondary
 antibody at 1:1,000 for 60 min at RT. Block: MB-070 for 30
 min at RT. Predicted/Observed size: 28 kDa for Human
 Lambda. Other band(s): none.

Disclaimer

This product is for research use only and is not intended for therapeutic or diagnostic applications. Please contact a technical service representative for more information. All products of animal origin manufactured by Rockland Immunochemicals are derived from starting materials of North American origin. Collection was performed in United States Department of Agriculture (USDA) inspected facilities and all materials have been inspected and certified to be free of disease and suitable for exportation. All properties listed are typical characteristics and are not specifications. All suggestions and data are offered in good faith but without guarantee as conditions and methods of use of our products are beyond our control. All claims must be made within 30 days following the date of delivery. The prospective user must determine the suitability of our materials before adopting them on a commercial scale. Suggested uses of our products are not recommendations to use our products in violation of any patent or as a license under any patent of Rockland Immunochemicals, Inc. If you require a commercial license to use this material and do not have one, then return this material, unopened to: Rockland Inc., P.O. BOX 5199, Limerick, Pennsylvania, USA.