



SZABO SCANDIC

Part of Europa Biosite

Produktinformation



Forschungsprodukte & Biochemikalien



Zellkultur & Verbrauchsmaterial



Diagnostik & molekulare Diagnostik



Laborgeräte & Service

Weitere Information auf den folgenden Seiten!
See the following pages for more information!



Lieferung & Zahlungsart

siehe unsere [Liefer- und Versandbedingungen](#)

Zuschläge

- Mindermengenzuschlag
- Trockeneiszuschlag
- Gefahrgutzuschlag
- Expressversand

SZABO-SCANDIC HandelsgmbH

Quellenstraße 110, A-1100 Wien

T. +43(0)1 489 3961-0

F. +43(0)1 489 3961-7

mail@szabo-scandic.com

www.szabo-scandic.com

[linkedin.com/company/szaboscandic](https://www.linkedin.com/company/szaboscandic) 

Datasheet for 609-4512

Human IgG (gamma chain) Antibody Alkaline Phosphatase Conjugated

Overview

Description:	Rabbit Anti-Human IgG (gamma chain) Antibody Alkaline Phosphatase Conjugated - 609-4512
Item No.:	609-4512
Size:	1 mg
Applications:	Dot Blot, ELISA
Reactivity:	Human
Host Species:	Rabbit

Product Details

Background:	Anti-Human IgG (gamma chain) Alkaline Phosphatase generated in rabbit detects human Immunoglobulin G (gamma chain). It is a protein complex composed of four peptide chains — two identical heavy chains and two identical light chains arranged in a Y-shape typical of antibody monomers. Each IgG has two antigen binding sites. Representing approximately 75% of serum immunoglobulins in humans, IgG is the most abundant antibody isotype found in the circulation. IgG molecules are synthesized and secreted by plasma B cells. Secondary Antibodies are available in a variety of formats and conjugate types. When choosing a secondary antibody product, consideration must be given to species and immunoglobulin specificity, conjugate type, fragment and chain specificity, level of cross-reactivity, and host-species source and fragment composition. Anti-Human IgG (gamma chain) Antibody is ideal for investigators in Immunology, Cancer, and Microbiology research.
Synonyms:	rabbit anti-Human IgG (gamma chain) alkaline phosphatase conjugated Antibody, rabbit anti-Human IgG Antibody alk phos conjugation
Host Species:	Rabbit
Specificity:	IgG (gamma chain)
Conjugate:	Alkaline Phosphatase (AP)
Clonality:	Polyclonal
Format:	IgG

Target Details

Reactivity:	Human
Immunogen:	Human IgG gamma heavy chain
Purity/Specificity:	This product was prepared from monospecific antiserum by immunoaffinity chromatography using antigens coupled to agarose beads followed by solid phase adsorption(s) to remove any unwanted reactivities. Assay by immunoelectrophoresis resulted in a single precipitin arc against anti-Alkaline Phosphatase (calf intestine), anti-Rabbit Serum, Human IgG and Human Serum. Specificity was confirmed by ELISA minimal cross reactivity against other Human heavy or light chain isotypes.

Application Details

Tested Applications:	Dot Blot, ELISA
Application Note:	Anti-Human IgG (gamma chain) Alkaline Phosphatase has been tested by dot blot and ELISA and is assayed against 1.0 ug of Human IgG in a standard capture ELISA using pNPP p-nitrophenyl phosphate code # NPP-10 as a substrate for 30 minutes at room temperature. A working dilution of 1:1,000 to 1:3,500 of the reconstitution concentration is suggested for this product.
Assay Dilutions:	All assays should be optimized by the user. Recommended dilutions (if any) may be listed below.
ELISA:	1:10,000 - 1:20,000
IHC:	1:200 - 1:1,000
WB:	1:500 - 1:2,500

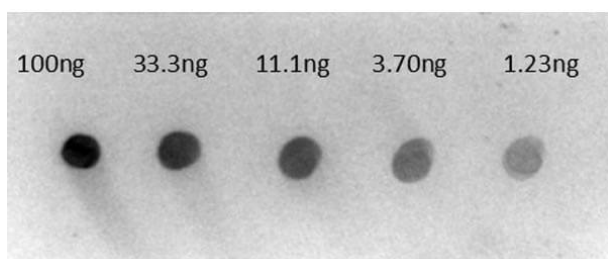
Formulation

Physical State:	Liquid (sterile filtered)
Concentration:	1.0 mg/mL by UV absorbance at 280 nm
Buffer:	0.05 M Tris Chloride, 0.15M Sodium Chloride, 0.001M Magnesium Chloride, 0.0001M Zinc Chloride, 50% (v/v) Glycerol; pH 8.0
Preservative:	0.05% (w/v) Sodium Azide
Stabilizer:	10 mg/mL Bovine Serum Albumin (BSA) - Immunoglobulin and Protease free

Shipping & Handling

Shipping Condition:	Wet Ice
Storage Condition:	Store vial at 4° C before opening. DO NOT FREEZE. This product is stable at 4° C as an undiluted liquid. Dilute only prior to immediate use. Freezing alkaline phosphatase conjugates will result in a substantial loss of enzymatic activity.
Expiration:	Expiration date is one (1) year from date of receipt.

Images



Dot Blot

Dot Blot of Rabbit Anti-Human IgG gamma chain Alkaline Phosphatase Conjugated Antibody. Lane 1: 100ng hu IgG. Lane 2: 33.3ng hu IgG. Lane 3: 11.1ng hu IgG. Lane 4: 3.70ng hu IgG. Lane 5: 1.23ng hu IgG. Secondary Antibody: Rt-a-Hu IgG Alk Phos at 1µg/mL. Blocking Buffer: BlockOut MB-073 for 30 min at RT.

Disclaimer

This product is for research use only and is not intended for therapeutic or diagnostic applications. Please contact a technical service representative for more information. All products of animal origin manufactured by Rockland Immunochemicals are derived from starting materials of North American origin. Collection was performed in United States Department of Agriculture (USDA) inspected facilities and all materials have been inspected and certified to be free of disease and suitable for exportation. All properties listed are typical characteristics and are not specifications. All suggestions and data are offered in good faith but without guarantee as conditions and methods of use of our products are beyond our control. All claims must be made within 30 days following the date of delivery. The prospective user must determine the suitability of our materials before adopting them on a commercial scale. Suggested uses of our products are not recommendations to use our products in violation of any patent or as a license under any patent of Rockland Immunochemicals, Inc. If you require a commercial license to use this material and do not have one, then return this material, unopened to: Rockland Inc., P.O. BOX 5199, Limerick, Pennsylvania, USA.