



SZABO SCANDIC

Part of Europa Biosite

Produktinformation



Forschungsprodukte & Biochemikalien



Zellkultur & Verbrauchsmaterial



Diagnostik & molekulare Diagnostik



Laborgeräte & Service

Weitere Information auf den folgenden Seiten!
See the following pages for more information!



Lieferung & Zahlungsart

siehe unsere [Liefer- und Versandbedingungen](#)

Zuschläge

- Mindermengenzuschlag
- Trockeneiszuschlag
- Gefahrgutzuschlag
- Expressversand

SZABO-SCANDIC Handels GmbH

Quellenstraße 110, A-1100 Wien

T. +43(0)1 489 3961-0

F. +43(0)1 489 3961-7

mail@szabo-scandic.com

www.szabo-scandic.com

[linkedin.com/company/szaboscandic](https://www.linkedin.com/company/szaboscandic) 

Datasheet for 609-9202**Human IgG (H&L) Antibody Fluorescein Conjugated****Overview**

| | |
|----------------------|---|
| Description: | Chicken Anti-Human IgG (H&L) Antibody Fluorescein Conjugated - 609-9202 |
| Item No.: | 609-9202 |
| Size: | 1 mg |
| Applications: | Dot Blot |
| Reactivity: | Human |
| Host Species: | Chicken |

Product Details

| | |
|----------------------|--|
| Background: | Anti-Human IgG (H&L) Fluorescein generated in chicken detects human Immunoglobulin G (IgG), both heavy and light chains of the antibody molecule are present. It is a protein complex composed of four peptide chains — two identical heavy chains and two identical light chains arranged in a Y-shape typical of antibody monomers. Each IgG has two antigen binding sites. Representing approximately 75% of serum immunoglobulins in humans, IgG is the most abundant antibody isotype found in the circulation. IgG molecules are synthesized and secreted by plasma B cells. Secondary Antibodies are available in a variety of formats and conjugate types. When choosing a secondary antibody product, consideration must be given to species and immunoglobulin specificity, conjugate type, fragment and chain specificity, level of cross-reactivity, and host-species source and fragment composition. |
| Synonyms: | chicken anti-Human IgG fluorescein conjugated Antibody, chicken anti-Human IgG Antibody FITC conjugation |
| Host Species: | Chicken |
| Specificity: | IgG (H&L) |
| Conjugate: | Fluorescein (FITC) |
| Clonality: | Polyclonal |
| Format: | IgG |
| F/P Ratio: | 1.7 |

Target Details

| | |
|----------------------------|--|
| Reactivity: | Human |
| Immunogen: | Human IgG whole molecule |
| Purity/Specificity: | This product was prepared from monospecific antiserum by immunoaffinity chromatography using Human IgG coupled to agarose. Assay by immunoelectrophoresis resulted in a single precipitin arc against anti-Fluorescein, anti-Chicken Serum, Human IgG and Human Serum. |

Application Details

| | |
|-----------------------------|---|
| Tested Applications: | Dot Blot |
| Application Note: | Anti-Human IgG (H&L) Fluorescein has been tested by dot blot and is designed for immunofluorescence microscopy, fluorescence based plate assays (FLISA) and fluorescent western blotting. This product is also suitable for multiplex analysis, including multicolor imaging, utilizing various commercial platforms. |
| Assay Dilutions: | All assays should be optimized by the user. Recommended dilutions (if any) may be listed below. |
| FC: | 1:500 - 1:2,500 |
| FLISA: | 1:10,000 - 1:50,000 |
| IF: | 1:1,000 - 1:5,000 |

Formulation

| | |
|-------------------------------|--|
| Physical State: | Lyophilized |
| Concentration: | 1.0 mg/mL by UV absorbance at 280 nm |
| Buffer: | 0.02 M Potassium Phosphate, 0.15 M Sodium Chloride, pH 7.2 |
| Preservative: | 0.01% (w/v) Sodium Azide |
| Stabilizer: | 10 mg/mL Bovine Serum Albumin (BSA) - Immunoglobulin and Protease free |
| Reconstitution Volume: | 1.0 mL |
| Reconstitution Buffer: | Restore with deionized water (or equivalent) |

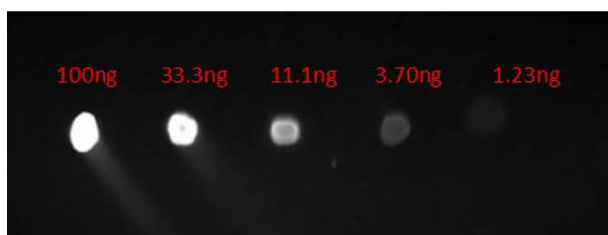
Shipping & Handling

| | |
|----------------------------|---------|
| Shipping Condition: | Ambient |
|----------------------------|---------|

Storage Condition: Store vial at 4° C prior to restoration. For extended storage aliquot contents and freeze at -20° C or below. Avoid cycles of freezing and thawing. Centrifuge product if not completely clear after standing at room temperature. This product is stable for several weeks at 4° C as an undiluted liquid. Dilute only prior to immediate use.

Expiration: Expiration date is one (1) year from date of receipt.

Images



Dot Blot

Dot Blot of Chicken Anti-HUMAN IgG Fluorescein Conjugated Antibody. Lane 1: 100ng. Lane 2: 33.3ng. Lane 3: 11.1ng. Lane 4: 3.7ng. Lane 5: 1.23ng. Secondary Antibody: Ch-a-Hu IgG FITC Conj 1µg/mL. Blocking Buffer: BlockOut MB-073 for 30 min at RT.

Disclaimer

This product is for research use only and is not intended for therapeutic or diagnostic applications. Please contact a technical service representative for more information. All products of animal origin manufactured by Rockland Immunochemicals are derived from starting materials of North American origin. Collection was performed in United States Department of Agriculture (USDA) inspected facilities and all materials have been inspected and certified to be free of disease and suitable for exportation. All properties listed are typical characteristics and are not specifications. All suggestions and data are offered in good faith but without guarantee as conditions and methods of use of our products are beyond our control. All claims must be made within 30 days following the date of delivery. The prospective user must determine the suitability of our materials before adopting them on a commercial scale. Suggested uses of our products are not recommendations to use our products in violation of any patent or as a license under any patent of Rockland Immunochemicals, Inc. If you require a commercial license to use this material and do not have one, then return this material, unopened to: Rockland Inc., P.O. BOX 5199, Limerick, Pennsylvania, USA.