



# SZABO SCANDIC

Part of Europa Biosite

## Produktinformation



Forschungsprodukte & Biochemikalien



Zellkultur & Verbrauchsmaterial



Diagnostik & molekulare Diagnostik



Laborgeräte & Service

Weitere Information auf den folgenden Seiten!  
See the following pages for more information!



### Lieferung & Zahlungsart

siehe unsere [Liefer- und Versandbedingungen](#)

### Zuschläge

- Mindermengenzuschlag
- Trockeneiszuschlag
- Gefahrgutzuschlag
- Expressversand

### SZABO-SCANDIC HandelsgmbH

Quellenstraße 110, A-1100 Wien

T. +43(0)1 489 3961-0

F. +43(0)1 489 3961-7

[mail@szabo-scandic.com](mailto:mail@szabo-scandic.com)

[www.szabo-scandic.com](http://www.szabo-scandic.com)

[linkedin.com/company/szaboscandic](https://www.linkedin.com/company/szaboscandic) 

## Datasheet for 610-1002-0500

**Mouse IgG (H&L) Antibody Rhodamine Conjugated****Overview**

<b>Description:</b>	Goat Anti-Mouse IgG (H&L) Antibody Rhodamine Conjugated - 610-1002-0500
<b>Item No.:</b>	610-1002-0500
<b>Size:</b>	500 µg
<b>Applications:</b>	Dot Blot, WB, EM, FISH, IF, Multiplex
<b>Reactivity:</b>	Mouse
<b>Host Species:</b>	Goat

**Product Details**

<b>Background:</b>	Anti-Mouse IgG Rhodamine Antibody generated in goat detects reactivity to Mouse IgG. Secreted as part of the adaptive immune response by plasma B cells, immunoglobulin G constitutes 75% of serum immunoglobulins. Immunoglobulin G binds to viruses, bacteria, as well as fungi and facilitates their destruction or neutralization via agglutination (and thereby immobilizing them), activation of the complement cascade, and opsonization for phagocytosis. The whole IgG molecule possesses both the F(c) region, recognized by high-affinity Fc receptor proteins, as well as the F(ab) region possessing the epitope-recognition site. Both the Heavy and Light chains of the antibody molecule are present. Secondary Antibodies are available in a variety of formats and conjugate types. When choosing a secondary antibody product, consideration must be given to species and immunoglobulin specificity, conjugate type, fragment and chain specificity, level of cross-reactivity, and host-species source and fragment composition.
<b>Synonyms:</b>	goat anti-Mouse IgG rhodamine conjugated Antibody, goat anti-Mouse IgG Antibody TRITC conjugation
<b>Host Species:</b>	Goat
<b>Specificity:</b>	IgG (H&L)
<b>Conjugate:</b>	Rhodamine (TRITC)
<b>Clonality:</b>	Polyclonal
<b>Format:</b>	IgG
<b>F/P Ratio:</b>	2.9

## Target Details

<b>Reactivity:</b>	Mouse
<b>Immunogen:</b>	Mouse IgG whole molecule
<b>Purity/Specificity:</b>	This product was prepared from monospecific antiserum by immunoaffinity chromatography using Mouse IgG coupled to agarose beads. Assay by immunoelectrophoresis resulted in a single precipitin arc against anti-Goat Serum, Mouse IgG and Mouse Serum.

## Application Details

<b>Tested Applications:</b>	Dot Blot, WB
<b>Suggested Applications:</b>	EM, FISH, IF, Multiplex (Based on references)
<b>Application Note:</b>	Anti-Mouse IgG Rhodamine Antibody has been tested by dot blot and western blot and is available in a variety of formats. Anti IgG secondary antibody conjugated is suitable for ELISA, Immunohistochemistry western blotting as well as other peroxidase antibody based assays.
<b>Assay Dilutions:</b>	All assays should be optimized by the user. Recommended dilutions (if any) may be listed below.
<b>FC:</b>	1:500 - 1:2,500
<b>FLISA:</b>	1:10,000 - 1:50,000
<b>IF:</b>	1:1,000 - 1:5,000

## Formulation

<b>Physical State:</b>	Lyophilized
<b>Concentration:</b>	1.0 mg/mL by UV absorbance at 280 nm
<b>Buffer:</b>	0.02 M Potassium Phosphate, 0.15 M Sodium Chloride, pH 7.2
<b>Preservative:</b>	0.1% (w/v) Sodium Azide
<b>Stabilizer:</b>	10 mg/mL Bovine Serum Albumin (BSA) - Immunoglobulin and Protease free
<b>Reconstitution Volume:</b>	500 $\mu$ L
<b>Reconstitution Buffer:</b>	Restore with deionized water (or equivalent)

## Shipping & Handling

<b>Shipping Condition:</b>	Ambient
----------------------------	---------

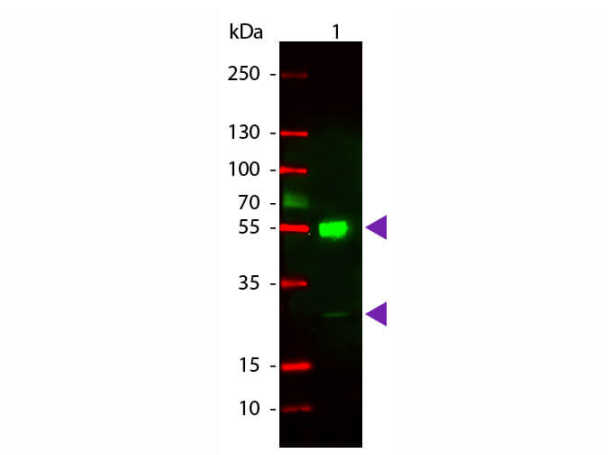
<b>Storage Condition:</b>	Store vial at 4° C prior to restoration. For extended storage aliquot contents and freeze at -20° C or below. Avoid cycles of freezing and thawing. Centrifuge product if not completely clear after standing at room temperature. This product is stable for several weeks at 4° C as an undiluted liquid. Dilute only prior to immediate use.
<b>Expiration:</b>	Expiration date is one (1) year from date of receipt.

## Images



### Dot Blot

Dot Blot of Rhodamine Conjugated Goat-a-Mouse IgG.  
 Antigen: Mouse IgG. Load: Lane 1 - 50ng Lane 2 - 16.67ng  
 Lane 3 - 5.56ng Lane 4 - 1.85ng Lane 5 - 0.62ng Primary  
 antibody: none Secondary antibody: Rhodamine  
 Conjugated Goat-a-Mouse IgG secondary antibody at  
 1:1,000 for 60 min at RT. Block: MB-070 for 60 min at RT.



### Western Blot

Western Blot of Rhodamine Conjugated Goat anti-Mouse  
 IgG Secondary Antibody. Lane 1: Mouse IgG. Lane 2:  
 none. Load: 50 ng per lane. Primary antibody: none.  
 Secondary antibody: Rhodamine goat secondary antibody at  
 1:1,000 for 60 min at RT. Block: MB-070 for 30 min at RT.  
 Predicted/Observed size: 25 & 55 kDa, 25 & 55 kDa for Goat  
 IgG. Other band(s): none.

## References

- Hertika AMS, Kusriani K, Indrayani E et al. Metallothionein expression on oysters (*Crassostrea cuculata* and *Crassostrea glomerata*) from the southern coastal region of East Java. *F1000Research* (2020)
- Yue CH et al. Myeloid Zinc Finger 1 (MZF1) Maintains the Mesenchymal Phenotype by Down-regulating IGF1R/p38 MAPK/ER $\alpha$  Signaling Pathway in High-level MZF1-expressing TNBC cells. *Anticancer Res.* (2019)
- Lingli Li et al. Pharmacological screening using an FXN-EGFP cellular genomic reporter assay for the therapy of Friedreich ataxia. *PLoS One.* (2013)

## Disclaimer

This product is for research use only and is not intended for therapeutic or diagnostic applications. Please contact a technical service representative for more information. All products of animal origin manufactured by Rockland Immunochemicals are derived from starting materials of North American origin. Collection was performed in United States Department of Agriculture (USDA) inspected facilities and all materials have been inspected and certified to be free of disease and suitable for exportation. All properties listed are typical characteristics and are not specifications. All suggestions and data are offered in good faith but without guarantee as conditions and methods of use of our products are beyond our control. All claims must be made within 30 days following the date of delivery. The prospective user must determine the suitability of our materials before adopting them on a commercial scale. Suggested uses of our products are not recommendations to use our products in violation of any patent or as a license under any patent of Rockland Immunochemicals, Inc. If you require a commercial license to use this material and do not have one, then return this material, unopened to: Rockland Inc., P.O. BOX 5199, Limerick, Pennsylvania, USA.