



# SZABO SCANDIC

Part of Europa Biosite

## Produktinformation



Forschungsprodukte & Biochemikalien



Zellkultur & Verbrauchsmaterial



Diagnostik & molekulare Diagnostik



Laborgeräte & Service

Weitere Information auf den folgenden Seiten!  
See the following pages for more information!



### Lieferung & Zahlungsart

siehe unsere [Liefer- und Versandbedingungen](#)

### Zuschläge

- Mindermengenzuschlag
- Trockeneiszuschlag
- Gefahrgutzuschlag
- Expressversand

### SZABO-SCANDIC HandelsgmbH

Quellenstraße 110, A-1100 Wien

T. +43(0)1 489 3961-0

F. +43(0)1 489 3961-7

[mail@szabo-scandic.com](mailto:mail@szabo-scandic.com)

[www.szabo-scandic.com](http://www.szabo-scandic.com)

[linkedin.com/company/szaboscandic](https://www.linkedin.com/company/szaboscandic) 

**Datasheet for 610-101-121****Mouse IgG (H&L) Antibody Pre-adsorbed****Overview**

<b>Description:</b>	Goat Anti-Mouse IgG (H&L) Antibody (Min X Bv Ch Gt GP Ham Hs Hu Rb Rt & Sh Serum Proteins) - 610-101-121
<b>Item No.:</b>	610-101-121
<b>Size:</b>	1 mg
<b>Applications:</b>	ELISA, LFA, WB
<b>Reactivity:</b>	Mouse
<b>Host Species:</b>	Goat

**Product Details**

<b>Background:</b>	Anti-Mouse IgG whole molecule antibody generated in goat detects specifically Mouse IgG whole molecule . This secondary antibody anti-Mouse is ideal for investigators who routinely perform ELISA, Sandwich ELISA, titration assays, western-blot, immunoprecipitation and more generally immunoassays.
<b>Synonyms:</b>	goat anti-Mouse IgG Antibody, Gt-a-Mouse IgG, Mouse Antibody in Goat, Mouse Secondary Antibody
<b>Host Species:</b>	Goat
<b>Specificity:</b>	IgG (H&L)
<b>Clonality:</b>	Polyclonal
<b>Format:</b>	IgG

**Target Details**

<b>Reactivity:</b>	Mouse
<b>Immunogen Type:</b>	Native Protein
<b>Immunogen:</b>	Anti-Mouse IgG whole molecule was produced by repeated immunization with Mouse IgG whole molecule in goat.

<b>Purity/Specificity:</b>	This product was prepared from monospecific antiserum by immunoaffinity chromatography using Mouse IgG coupled to agarose beads followed by solid phase adsorption(s) to remove any unwanted reactivities. Assay by immunoelectrophoresis resulted in a single precipitin arc against anti-Goat Serum, Mouse IgG and Mouse Serum. No reaction was observed against Bovine, Chicken, Goat, Guinea Pig, Hamster, Horse, Human, Rabbit, Rat and Sheep Serum Proteins. Specificity was confirmed by ELISA at less than 1% of target signal.
----------------------------	---

## Application Details

<b>Tested Applications:</b>	ELISA
<b>Suggested Applications:</b>	LFA, WB (Based on references)
<b>Application Note:</b>	Anti-Mouse IgG has been tested by ELISA and is suitable for use in immunoelectrophoresis, western-blot, competitive western-blot, ELISA and competitive ELISA assays. Specific conditions for reactivity and signal detection should be optimized by the end user.
<b>Assay Dilutions:</b>	All assays should be optimized by the user. Recommended dilutions (if any) may be listed below.
<b>ELISA:</b>	1:50,000 - 1:100,000
<b>IHC:</b>	1:1,000 - 1:5,000
<b>WB:</b>	1:2,000 - 1:20,000

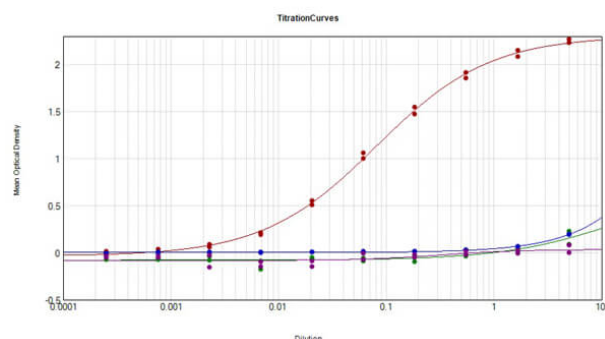
## Formulation

<b>Physical State:</b>	Liquid (sterile filtered)
<b>Concentration:</b>	0.95 mg/mL by UV absorbance at 280 nm
<b>Buffer:</b>	0.02 M Potassium Phosphate, 0.15 M Sodium Chloride, pH 7.2
<b>Preservative:</b>	0.01% (w/v) Sodium Azide
<b>Stabilizer:</b>	None

## Shipping & Handling

<b>Shipping Condition:</b>	Wet Ice
<b>Storage Condition:</b>	Store vial at 4° C prior to opening. This product is stable for several weeks at 4° C as an undiluted liquid. Dilute only prior to immediate use. For extended storage aliquot contents and freeze at -20° C or below. Avoid cycles of freezing and thawing.
<b>Expiration:</b>	Expiration date is one (1) year from date of receipt.

## Images



## ELISA

ELISA Results of Goat Anti-Mouse IgG (H&L) Antibody (Min X Bv Ch Gt GP Ham Hs Hu Rb Rt & Sh Serum Proteins) tested against purified Mouse IgG mx10. Each well was coated in duplicate with 1.0 µg of Mouse IgG (p/n 010-0102) [Red Line], Bovine IgG (p/n 001-0102) [Green Line], Chicken IgG (p/n 003-0102) [Blue Line], Goat IgG (p/n 005-0102) [Purple Line], Guinea Pig IgG (p/n 006-0102), Hamster IgG (p/n 007-0102), Horse IgG (p/n 008-0102), Human IgG (p/n 009-0102), Rabbit IgG (p/n 011-0102), Rat IgG (p/n 012-0102), and Sheep IgG (p/n 013-0102). The starting dilution of antibody was 5µg/ml and the X-axis represents the Log10 of a 3-fold dilution. This titration is a 4-parameter curve fit where the IC50 is defined as the titer of the antibody. Assay performed using TMB substrate (p/n TMBE-1000).

## References

- Saferali A, Tang AC, Strug LJ, et al. Immunomodulatory function of the cystic fibrosis modifier gene BPIFA1. *PLoS One*. (2020)
- Seemann S, Ernst M, Cimmaruta C, et al. Proteostasis regulators modulate proteasomal activity and gene expression to attenuate multiple phenotypes in Fabry disease. *Biochem J*. (2020)
- Waldschmidt TJ et al. Abnormal T cell-dependent B-cell responses in SCID mice receiving allogeneic bone marrow in utero. Severe combined immune deficiency. *Blood*. (2002)
- Corstjens P. et al. Use of up-converting phosphor reporters in lateral-flow assays to detect specific nucleic acid sequences: a rapid, sensitive DNA test to identify human papillomavirus type 16 infection. *Clin Chem*. (2001)

## Disclaimer

This product is for research use only and is not intended for therapeutic or diagnostic applications. Please contact a technical service representative for more information. All products of animal origin manufactured by Rockland Immunochemicals are derived from starting materials of North American origin. Collection was performed in United States Department of Agriculture (USDA) inspected facilities and all materials have been inspected and certified to be free of disease and suitable for exportation. All properties listed are typical characteristics and are not specifications. All suggestions and data are offered in good faith but without guarantee as conditions and methods of use of our products are beyond our control. All claims must be made within 30 days following the date of delivery. The prospective user must determine the suitability of our materials before adopting them on a commercial scale. Suggested uses of our products are not recommendations to use our products in violation of any patent or as a license under any patent of Rockland Immunochemicals, Inc. If you require a commercial license to use this material and do not have one, then return this material, unopened to: Rockland Inc., P.O. BOX 5199, Limerick, Pennsylvania, USA.