



SZABO SCANDIC

Part of Europa Biosite

Produktinformation



Forschungsprodukte & Biochemikalien



Zellkultur & Verbrauchsmaterial



Diagnostik & molekulare Diagnostik



Laborgeräte & Service

Weitere Information auf den folgenden Seiten!
See the following pages for more information!



Lieferung & Zahlungsart

siehe unsere [Liefer- und Versandbedingungen](#)

Zuschläge

- Mindermengenzuschlag
- Trockeneiszuschlag
- Gefahrgutzuschlag
- Expressversand

SZABO-SCANDIC HandelsgmbH

Quellenstraße 110, A-1100 Wien

T. +43(0)1 489 3961-0

F. +43(0)1 489 3961-7

mail@szabo-scandic.com

www.szabo-scandic.com

[linkedin.com/company/szaboscandic](https://www.linkedin.com/company/szaboscandic) 

Datasheet for 610-109-130

Mouse IgG IgA IgM (H&L) Antibody Texas Red™ Conjugated

Overview

Description:	Goat Anti-Mouse IgG IgA IgM (H&L) Antibody Texas Red™ Conjugated - 610-109-130
Item No.:	610-109-130
Size:	2 mg
Applications:	Dot Blot, WB
Reactivity:	Mouse
Host Species:	Goat

Product Details

Background:

Anti-Mouse IgG IgA IgM Texas Red Antibody generated in goat detects reactivity to Mouse IgG, Mouse IgA, and Mouse IgM. Secreted as part of the adaptive immune response by plasma B cells, immunoglobulin G constitutes 75% of serum immunoglobulins. Immunoglobulin G binds to viruses, bacteria, as well as fungi and facilitates their destruction or neutralization via agglutination (and thereby immobilizing them), activation of the complement cascade, and opsonization for phagocytosis. The whole IgG molecule possesses both the F(c) region, recognized by high-affinity Fc receptor proteins, as well as the F(ab) region possessing the epitope-recognition site. Both the Heavy and Light chains of the antibody molecule are present. Immunoglobulin A (IgA) is an antibody that plays a critical role in mucosal immunity. IgA has two subclasses (IgA1 and IgA2) and can exist in a dimeric form called secretory IgA (sIgA). Immunoglobulin M is the largest antibody isotype and the first to be secreted against an initial exposure to antigen. IgM is predominantly produced in the spleen. Formed from covalently linking 5 immunoglobulins together. Secondary Antibodies are available in a variety of formats and conjugate types. When choosing a secondary antibody product, consideration must be given to species and immunoglobulin specificity, conjugate type, fragment and chain specificity, level of cross-reactivity, and host-species source and fragment composition.

Synonyms:	Goat Anti Mouse IgG IgA IgM Antibody Texas Red™ Conjugation, Goat Anti-Mouse IgG IgA IgM Texas Red™ conjugated Antibody, Goat Anti-Mouse IgGAM Texas Red™ conjugate
Host Species:	Goat
Specificity:	IgG IgA IgM
Conjugate:	Texas Red®
Clonality:	Polyclonal

Format:	IgG
F/P Ratio:	3.12

Target Details

Reactivity:	Mouse
Immunogen:	Mouse IgG IgA and IgM whole molecule
Purity/Specificity:	Mouse IgG IgA IgM (H&L) Antibody Texas Red™ Conjugated was prepared from polyspecific antiserum by immunoaffinity chromatography using antigens coupled to agarose beads followed by solid phase adsorption(s) to remove any unwanted reactivities. Assay by immunoelectrophoresis resulted in a single precipitin arc against anti-Goat Serum. This product is suitable for the detection of all Mouse immunoglobulin classes, isotypes and chain combinations.

Application Details

Tested Applications:	Dot Blot, WB
Application Note:	Mouse IgG IgA IgM (H&L) Antibody Texas Red™ Conjugated has been tested by dot blot and western blot and is designed for immunofluorescence microscopy, fluorescence based plate assays (FLISA) and fluorescent western blotting. This product is also suitable for multiplex analysis, including multicolor imaging, utilizing various commercial platforms.
Assay Dilutions:	All assays should be optimized by the user. Recommended dilutions (if any) may be listed below.
FC:	1:500 - 1:2,500
FLISA:	1:10,000 - 1:50,000
IF:	1:1,000 - 1:5,000

Formulation

Physical State:	Lyophilized
Concentration:	2.0 mg/mL by UV absorbance at 280 nm
Buffer:	0.02 M Potassium Phosphate, 0.15 M Sodium Chloride, pH 7.2
Preservative:	0.01% (w/v) Sodium Azide
Stabilizer:	10 mg/mL Bovine Serum Albumin (BSA) - Immunoglobulin and Protease free
Reconstitution Volume:	1.0 mL

Reconstitution Buffer: Restore with deionized water (or equivalent)

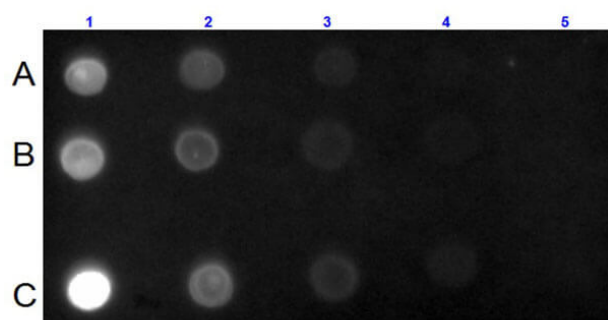
Shipping & Handling

Shipping Condition: Ambient

Storage Condition: Store vial at 4° C prior to restoration. For extended storage aliquot contents and freeze at -20° C or below. Avoid cycles of freezing and thawing. Centrifuge product if not completely clear after standing at room temperature. This product is stable for several weeks at 4° C as an undiluted liquid. Dilute only prior to immediate use.

Expiration: Expiration date is one (1) year from date of receipt.

Images



Dot Blot

Dot Blot for Mouse IgG IgA IgM (H&L) Antibody (GOAT) Texas Red™ Conjugated. Lane 1A: 100 ng Ms IgG. Lane 1B: 100 ng Ms IgA. Lane 1C: 100 ng Ms IgM. Lanes 2-5: serial dilution 3 fold of respective Antigen. Primary Antibody: none. Secondary Antibody: Goat anti-Mouse IgG IgA IgM (H&L) Antibody Texas Red™ Conjugated at 1:1,000 dilution at RT for 1 hour. Block: MB-070 at RT for 30 minutes.

Disclaimer

This product is for research use only and is not intended for therapeutic or diagnostic applications. Please contact a technical service representative for more information. All products of animal origin manufactured by Rockland Immunochemicals are derived from starting materials of North American origin. Collection was performed in United States Department of Agriculture (USDA) inspected facilities and all materials have been inspected and certified to be free of disease and suitable for exportation. All properties listed are typical characteristics and are not specifications. All suggestions and data are offered in good faith but without guarantee as conditions and methods of use of our products are beyond our control. All claims must be made within 30 days following the date of delivery. The prospective user must determine the suitability of our materials before adopting them on a commercial scale. Suggested uses of our products are not recommendations to use our products in violation of any patent or as a license under any patent of Rockland Immunochemicals, Inc. If you require a commercial license to use this material and do not have one, then return this material, unopened to: Rockland Inc., P.O. BOX 5199, Limerick, Pennsylvania, USA.